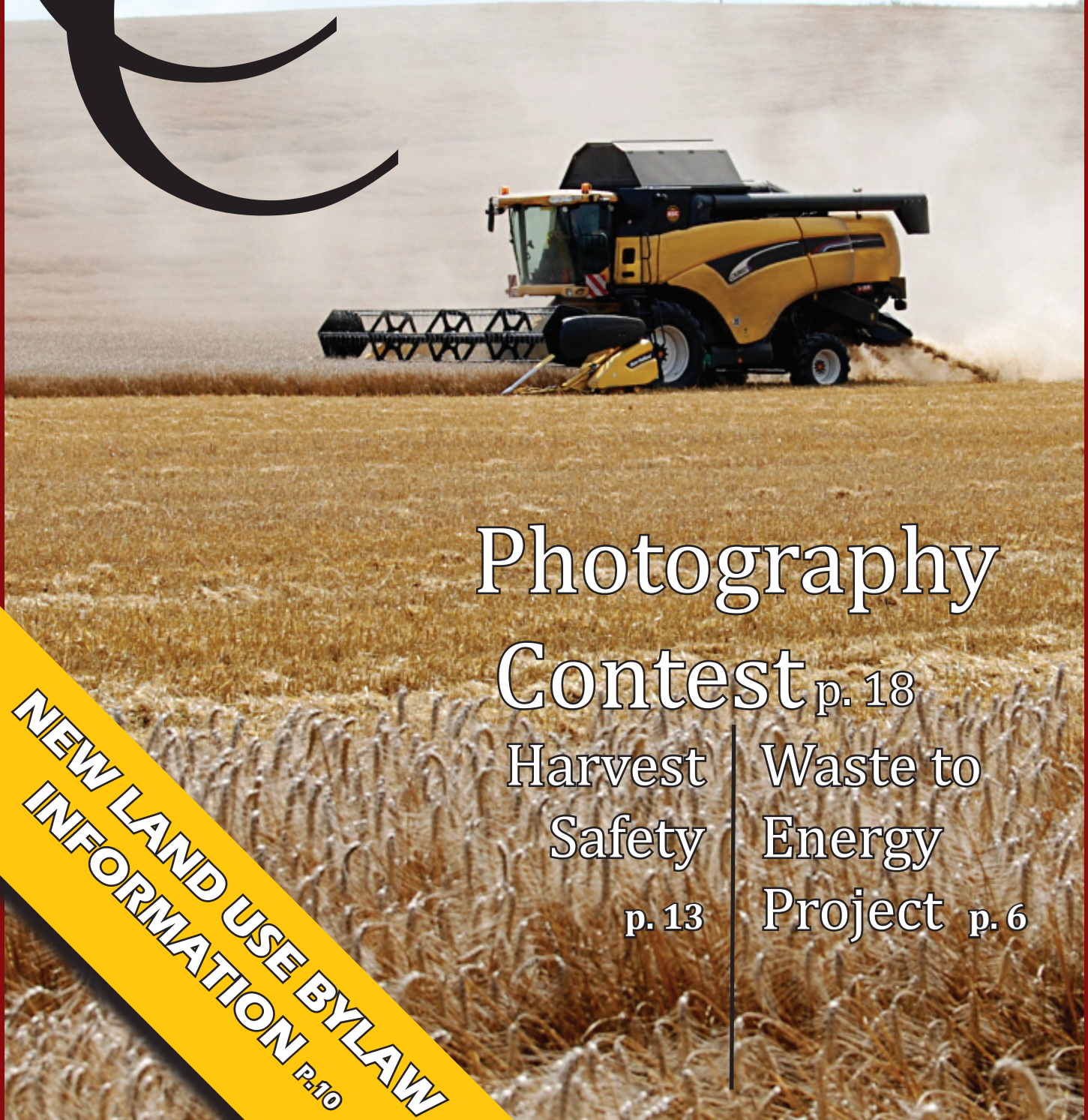


COUNTY CONNECTIONS

FALL 2011



Photography

Contest p. 18

Harvest

Waste to

Safety

Energy

p. 13

Project p. 6

**NEW LAND USE BYLAW
INFORMATION** P.10



NEW RECYCLING BINS AT ERSKINE, STETTLER & BOTHA TRANSFER STATIONS!

WHAT CAN I RECYCLE??

Beginning in early September, recycling bins will be placed at three (3) transfer stations on a trial basis. Erskine, Botha and Stettler will be the pilot locations for this project. After the bins have been installed, the County will survey residents and evaluate the usage of these bins. If the pilot is successful, you can expect to see bins in all of our transfer stations in the very near future. The pilot project is slated to last for 6 months.

You do not need to separate your recycling. As long as you follow the guidelines on the right, you can toss all your recycling into the same bin. Please be very conscious of the items that are not recyclable - especially used diapers and kitty litter. By sticking to the guidelines, you ensure that these bins are cost effective and do not fill-up with unacceptable materials.

Hours of Operation for Transfer Stations with Recycling Bins:

Stettler: Thurs - Mon
10:30 am - 6:30 Ppm

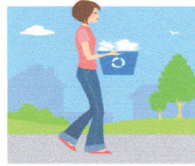
Erskine: Wednesday
1:30 pm - 5:30 pm
Saturday
1:00 pm - 5:00 pm

Botha: Tuesday
1:30 pm - 5:30 pm
Saturday
8:00 am - 12:00 pm



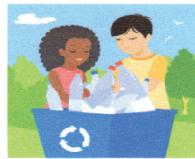
Recycling Tips

- ♻️ Bundle or tie loose cardboard
- ♻️ Put lighter items on the bottom of the recycling bin
- ♻️ Stuff all plastic grocery bags into one bag and tie



Cardboard

- ♻️ Flatten corrugated cardboard boxes
- ♻️ Flatten cereal boxes, food boxes and shoe boxes (remove plastic)
- ♻️ Milk cartons (remove cap, rinse with water and flatten)
- ♻️ Juice boxes (remove straw)



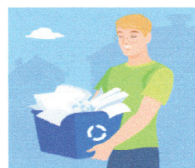
Glass – remove lids, empty and rinse (labels do not need to be removed)

- ♻️ Bottles (all beverages)
- ♻️ Jars (jam, pickles, etc.)



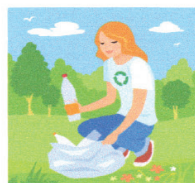
Metals – rinse, remove ends and trap inside or discard

- ♻️ Aluminum cans (soup, tuna, etc.)
- ♻️ Aluminum containers (pie plates)



Paper

- ♻️ Catalogues and magazines
- ♻️ Computer paper
- ♻️ Envelopes
- ♻️ Greeting cards and non-foil gift wrap
- ♻️ Newspapers, inserts and junk mail
- ♻️ Paperback and hardcover books
- ♻️ Paper bags
- ♻️ Paper egg cartons
- ♻️ Phonebooks
- ♻️ Shredded paper (only accepted plastic bags)



Plastics – remove lids, empty and rinse (labels do not need to be removed)

- ♻️ Beverage containers, milk jugs and pop bottles
- ♻️ Condiment containers (ketchup, mustard, peanut butter, etc.)
- ♻️ Detergent and fabric softener bottles
- ♻️ Household cleaner bottles
- ♻️ Plastic bags (put together in one bag)
- ♻️ Yogurt containers

Non-recyclable items

- Ceramics
- China
- Light bulbs
- Mirrors
- Paper tissues or paper towels
- Styrofoam
- Tupperware
- Waxed cardboard



MESSAGE FROM THE REEVE 4

RV's AT BUFFALO LAKE 5

WASTE TO ENERGY PROJECT: 6
A review of the technology behind the County's newest waste management project

WARD FOCUS: BOTHA-GADSBY 8
An ongoing series taking an in-depth look at our Electoral Wards

NEW LAND USE BYLAW: FAQ 12

HARVEST SAFETY 15

RURAL WATER UPDATE 16
An update on the progress of both the South East Water line near Byemoor and Endiang and the Central Phase near Botha and Gadsby.

PHOTOGRAPHY CONTEST 18
The County is calling for your best photos from around our County. Submit them to win GREAT prizes!

BACK TO SCHOOL SAFETY 22
Keeping our rural kids safe on their way to school



10

THE BRIDGE PROBLEM

Bridges are an integral part of our rural infrastructure and need to be maintained as such. The high cost to replcae them has led us to find new innovative ways to cross waterways.



20 DISTRACTED DRIVING

We have all heard about the new law in effect - but what does it really mean? This article will outline what you can and cannot do behind the wheel and the kinds of enforcement you will see.

County Connections
Fall 2011; Volume 1 Issue 3

Editor-in-Chief: Tim Fox
Managing Editor: Shawna Benson

All Rights reserved. Any reproduction of the contents without written authorization from the publisher is strictly prohibited. The publisher cannot be held responsible for any errors or omissions found within this newsmagazine, or for

loss of, or damage to, unsolicited material submitted by readers.

Availability: Current Issues of County Connections can be obtained from the County of Stettler Administration Building while supplies last.

Subscription: County Connections is delivered Free of Charge to taxpayers, with exception to those who do not live in the Province of Alberta or have unsubscribed

from our mailing list. If you wish to receive future copies, please make the request to the Managing Editor at sbenson@stettlercounty.ca You may also view the current and back issues of the County Connections on our website at www.stettlercounty.ca





Well fall is almost upon us and although there has been above average rainfall and some hail, crops in the County are looking very good. Pastures and trees are looking very healthy again after suffering from the droughts of 2002 and 2009. However; what is good for the crops is not necessarily good for County roads and road construction and that has led to some frustration from Public Works and ratepayers alike.

The focus of the present council is to get the roads in shape as soon as possible after two wet summers and a winter of above average snowfall. To achieve this we have contracted out some gravel stockpiling and some road gravelling . This has worked very well with costs coming in quite favorably . Because of wet conditions, there are several soft grades throughout the County and these are being improved by using inch and a half or two inch gravel to tighten up the roadway and form a substantial base. This seems to be working well.

After several dryer than normal years, the two wet summers and a higher than normal snowfall has resulted in many drainage problems within the County. The Ag Service pumps have been going steady since spring and in some cases to very little effect. Some waterways were farmed through in the dryer years and some waterways were slowed with growth which led to problems during runoff. Some of these problems have been addressed and some are still ongoing. Another side effect of the "good growing conditions" is the huge crop of sweet clover along our roads. This has been a huge task for Ag Services to try to get the roadsides mowed.

Our council wants to address drainage problems in the hamlets particularly Red Willow and Erskine. Some preliminary work has been done and with some of the road construction and gravelling bring completed we can focus on these areas. We do have a plan for a sewage collection system at Red Willow but we are looking at ways to make it more affordable to the residents.

After several years of working with consultants and the municipalities within the County of Stettler we are one step closer to a true Regional Fire Authority. Through hard work with the affected municipalities and Fire Chief Mark Dennis, the Town of Stettler and The County of Stettler have signed fire agreements with the villages and summer villages which will make membership more equitable. This is a giant step forward .

This October will be one year with our new council. We are quite a diverse group with many differing ideas but , in my opinion, work very well together. I feel privileged to be reeve and I have enjoyed working with council and administration during the past months.

A handwritten signature in black ink, appearing to read "W. Nison".

DO YOU NEED A DEVELOPMENT PERMIT FOR A

RV?



On August 10, 2011 the County of Stettler adopted Bylaw 1461-11 to regulate the use of recreational vehicles as dwelling units in certain Buffalo Lake subdivisions. This bylaw is the result of a survey that was undertaken with lake residents earlier this year. In summary, the bylaw provides that any landowner in any land use district may use one or more Recreational Vehicle(s) for living accommodation for a period that does not exceed 14 days, without having to obtain a development permit. If a Recreational Vehicle will be used as a dwelling unit (i.e. it will be used for living accommodation for a period that exceeds 14 days), a development permit must be obtained and can only be issued if "Recreational Vehicle for use as a dwelling unit" is listed as a use in the land use district in which the parcel is located and the parcel is not yet developed with a detached dwelling or another type of dwelling unit.

Thus, all landowners with undeveloped lots in Buffalo Lake Meadows and Buffalo View Estates may apply for a discretionary use development permit (\$200) to use a Recreational Vehicle as a dwelling unit, subject to the recreational vehicle being connected to a certified sewage disposal system. In Buffalo Lake Meadows the permit may be issued for a period of 5 years and in Buffalo View Estates the

permit will be valid for two years. In Buffalo Lake Meadows and Buffalo View Estates a landowner may re-apply for a permit each time the permit expires. Further, in the community of Scenic Sands only those landowners of lots listed in the bylaw (i.e. lots that have RV's on them as of August 10, 2011) may apply, prior to December 31, 2011, for a discretionary use development permit (\$200) to use a Recreational Vehicle as a dwelling unit, subject to the recreational vehicle being connected to a certified sewage disposal system. These permits will be valid for five years, but may not be renewed or re-applied for at their expiration. Once the five year period expires, these landowners will have to either remove the RV's from their properties or must apply for a development permit to construct a detached dwelling on the parcel, and may then be issued a permit to continue to stay in the RV while the house is being constructed. Typically the construction of the house must be completed within 24 months. All other lots in Scenic Sands cannot use an RV for a dwelling unit unless it is for the period that they are legally constructing a house (typically 24 months).

For further information, please contact the County's Planning & Development Department at 403-742-4441.

Waste ENERGY



Waste management, and ultimately, waste reduction, is a very important priority for the County of Stettler. Recognizing early on (2007) that our landfill was going to fill up as our area population grew, the County of Stettler began researching innovative ways to change the way we are currently dealing with waste.

Fast forward to 2011, and the County of Stettler is now proudly partnering with Prairie BioGas and are going ahead with a project that will convert our landfill waste to products that can be used to create electricity and other energy.

The technology is described as a pyrolysis. It involves an ultra-high temperature Pyromex waste to energy system that converts any carbon containing waste into a synthetic gas (“syngas”) that can be substituted for natural gas for heating purposes or used to generate electricity in conventional equipment. It also creates two other products: bio-oil for use in heaters and generating equipment and biochar, which can be used as a coal substitute due to its high carbon content and heating values. The technology allows for a varied selection of feedstock choices including wood waste, municipal waste, used tires, used engine oil, plastic garbage, and wastes from automobile disposal.

The entire process is handled in a small unit that acts as a vacuum, so no oxygen is needed. It is NOT incineration or “burning” since no oxygen is required. Because it is the opposite of incineration, there are no harmful pollutants or toxic air emissions, and it is small in size, meaning it can be replicated in many landfills and transfer stations at various sizes.

A waste audit was performed in the County of Stettler in 2008. The results of this audit indicate that there is easily enough waste produced in the County to support a 25 tonne/day Pyromex system using 60% agricultural waste and 40% municipal solid waste (MSW). Diverting the MSW from the County landfill provides a major financial savings to the County because it obviates the need to build a new landfill cell.



The Pyrolysis Unit

Recent approvals from County of Stettler Council has moved this project into the Preparation Phase. We have currently contracted Gemini Consulting to complete all of the necessary environmental and regulatory applications required before moving into the Construction Phase.

This phase could take anywhere from 5- 12 months, depending on the permit requirements. After the government permitting is completed, our consultants will begin meeting with ATCO representatives to finalize an agreement that will allow us to sell the generated electricity to the power grid. Construction will follow shortly after that. We are hopeful the unit will be up and running at the Stettler Landfill Station site in 12-18 months.

A new MOU with the Stettler Waste Management Authority has secured us the location at the Stettler Landfill Site for the unit as well as a secured source of municipal waste. Although the Town of Stettler declined to be a participating partner, we are pleased that they are showing support for the project through this Memorandum of Understanding.

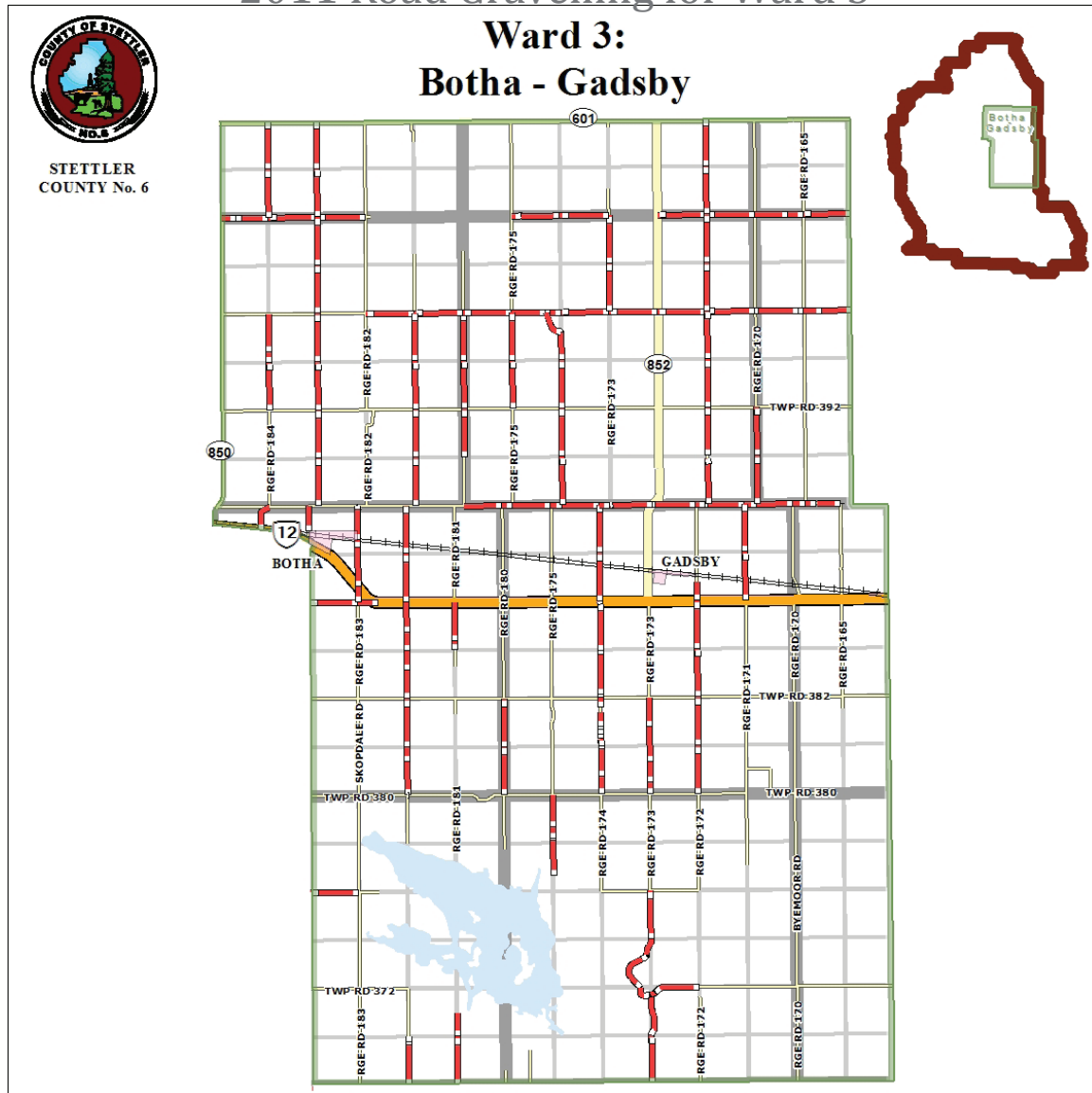
This project is being recognized as an important stepping stone for rural communities as it is a small, affordable and economical way for rural communities to deal with their waste in a safe and profitable way. As we are the first County implementing this project, municipalities across the Country are watching the progress of this project. We are confident that this cutting edge technology will go along way in promoting the County of Stettler's commitment to innovation, technology and solution-based management.

Councillor JACKSON



As the saying goes, "Time flies when you are having fun." The experience of my first year as County of Stettler councillor has been very positive, the learning curve has been steep but not unsurmountable, and the current council has the ability to disagree, debate, resolve issues and move forward with respect for each other. I am currently involved on many boards and committees and enjoy the challenges each pose, and working along side committed board members.

2011 Road Graveling for Ward 3



Ward 3 encompasses two village municipalities, the Village of Botha and the Village of Gadsby. Their integrated presence within the area is acknowledged in the ward designation; Botha/Gadsby. I am pleased with the healthy mixture of residents that support the activities and community groups regardless of the area or village they are from. This is the truest form of community, support for values and interests.

Botha-Gadsby Ward is a picturesque area with ranging topography. Farm land and pasture with many creeks and streams winding throughout. Around sixty or seventy years ago the provincial government commissioned the building of many new bridges that greatly reinforced and added value to our rural transportation network. Unfortunately the County of Stettler along with many other municipalities have an increasing number of these bridges failing structure tests and are forced to look at repair or replacement. Total budget allotted for bridge repair and replacement in Alberta by the provincial government is 20 million dollars, the average cost replacement of a rural route bridge with culvert



installation is about \$ 450,000.00. The process of project funding is by application and funds are dispensed by priority on a provincial level. This often reduces the chance of receiving funds for rural projects next to nil, I commend County of Stettler administration and staff for the successful applications up to this point.

Continuing this way is not acceptable, The County of Stettler is submitting and is supported by many other municipalities, a resolution for the AAMDC to lobby the government to change the acceptable structures that funding can be used on and include the use of “Jimbob” forestry bridges. At the average cost of \$150,000 - \$200,000 these structures would stretch the available funding to cover many more projects and also reduce the budgetary strain of municipalities funding their own projects. These “Jimbob” bridges are also better suited for the larger and wider pieces of farm equipment.

I currently sit on a provincial AAMDC Committee in regards to Municipal Affairs, Transportation and Infrastructure, I hope we will be convening in 2012 to tackle and find a solution to this problem.



On a related note, the efforts and work completed in regards to the maintenance of the county roads by County of Stettler employees has been outstanding, the weather has not cooperated at all with our forces but there has been a noticeable improvement in the condition of our roads. The Agriculture Service employees have been working hard on the roadside mowing program and controlling weeds in the ditches.

Please continue to have patience and if you have a concern feel free to call me with any issue and I would be more than happy to talk and meet if you wish.

We are entering into a busy time of the year and please remember to take the time to get the job done safely, the prices for agriculture are at a pleasing level but you can't enjoy the fruits of your labor if you are involved in a farm accident.

INNOVATIVE SOLUTIONS: BRIDGES

Bridges in the County of Stettler have come under heightened scrutiny as administration is now realizing that all the bridges built 40-50 years ago are all coming to the age of replacement at the same time. The county has over 100 bridges, and they all will be needing some kind of replacement or repair within the next 1-5 years. Although we do apply for funding for bridge replacement through an Alberta Government program, this program is stretched thin, as we are not the only municipality in this position. The wait times for replacement funding is sometimes longer than the life span of the actual bridge.

Traditional bridge replacement is extensive and expensive. In addition to the cost of replacement, we must also consider the traffic loads on the bridges as well as the condition and future of the road it is currently servicing. As a result, the County is using the last part of 2011 to focus on finding new ways to replace or repair bridges.

One of the alternatives for bridges that no longer see large amounts of traffic, is replacing the bridge with a large culvert. These projects are approved by Alberta

Transportation and are at a significant cost savings over complete bridge replacement. On August 8, Gendreau Construction Inc. commenced construction activities to replace a 60 year old single span timber bridge over Bigknife Creek southeast of Gadsby. It had been determined that the existing bridge had deteriorated beyond reasonable repair and needed to be replaced. By August 17, a new 2.0 m diameter steel culvert, as designed by GENIVAR Inc., was installed to replace the old bridge.

Traditional bridges can cost anywhere from \$500,000 to 1 million dollars depending on the road and traffic counts, but this project came in on budget at just around \$105,000.

Further to these kinds of replacements, the County of Stettler is pursuing a new method for replacing bridges that involves the use of "jim-bob" bridges used in the forestry and oil and gas industries. This research is ongoing and another example of how the County of Stettler is honoring our commitment to fiscal responsibility and a priority of road maintenance and repair.



Existing Bridge Structure



Removing Existing Bridge Structure



Installing New Culvert



Culvert Installed; Road Rebuilt

BRIDGE FUNDING STATUS:

3 YEAR BRIDGE REPLACEMENT PROJECTION



Recently, the County of Stettler submitted a resolution to the Alberta Association of Municipal Districts and Counties that would see a report drafted to address the many concerns rural municipalities have with bridges.

The most prominent problem is that the Alberta Government Bridge Funding Program does not have enough money to repair all of the bridges in the province, and has asked each municipality to provide them with a

listing of all the bridges that need repair within the next three years. Once that list was submitted, the government replied to each municipality with a listing of the bridges and what their status was for funding. Below is the County of Stettler Bridges and their designated funding status:

Tentatively Approved for funding in 2011:

BF 09007, near Big Valley, SSE 18-35-20-W4

BF 02371, Meeting Creek near Donalda. SW 08-42-18-W4

BF 73092, Big Knife Creek near Gadsby, WSW 36-38-17-W4

Tentatively Approved for 2012:

BF 73112, near Big Valley, SW 5-36-18-W4

BF 08607, Near Erskine, WNW 31-28-21-W4

We had submitted 27 bridges for possible funding within the next three years, and the government has only tentatively approved 5 projects over the next 3 years. The rest were assessed as low priority, due to a number of reasons. The main reason a bridge is assessed at lower priority are traffic counts.

This poses an even larger problem for the County. The bridges need to be replaced. Without the funding from the government, the costs associated with bridge replacement are enormous. This is the main reason we are researching other methods for watercourse crossings on rural roads.

The County of Stettler Council is also active in lobbying both the provincial government and our fellow municipalities to take action and try to find real, affordable solutions for these bridge replacements.

10 Land Use Bylaw

Most Asked Questions

1. Why does the County have to adopt a new land use bylaw with so many regulations?

The Municipal Government Act requires that every municipality in the province must have a land use bylaw. The Act also provides the parameters for the Land Use Bylaw, by stating the minimum requirements of what the bylaw must provide for and allowing the local municipality to provide for a range of other things that they deem necessary. The County of Stettler No. 6 has included a number of regulations, like dealing with aspects such as landscaping, communication towers, recreational vehicle parks and campgrounds, development setbacks and others, in order to create a regulatory framework that covers a wide range of development possibilities. The County must be ready to deal with a wide range of developments from high density subdivisions at the lake and urban type developments adjacent to the Town of Stettler to farming activities and acreages. If we do not have these regulations in place when development is being proposed, then we have to make those up as we go along. This is the worst scenario for any developer, because they prefer to know ahead of time what is expected of them so that they can properly plan their proposed development to know what the cost of it may be. Having these regulations also gives some protection to landowners when a development is being proposed adjacent to them.

2. Do the many regulations apply to all development?

The bylaw clearly states to what kind of development the regulations apply. For example, the landscaping

requirements do not apply to detached dwelling units or agricultural activities. The regulations are primarily aimed at commercial and industrial development. In addition, the Development Authority can relax or vary some of the regulations if they think it is appropriate in the context of a specific development application.

3. Will there be changes to Municipal Reserve and Environmental Reserve parcels when they are rezoned to the new Public Services District?

Municipal Reserve and Environmental Reserve parcels will not change from what they are today. The Municipal Government Act states that a reserve parcel can only be used for the purposes of a public park, a school, recreation purposes or be left in its natural state. If a municipality wants to use a reserve parcel for any other purpose it must first advertise a public hearing and adopt a bylaw.

4. Is a development permit required for farming activities?

The bylaw that was given first reading stated, as has been the intent always, that any and all types of primary farming activities are 'deemed approved' activities and do not require a development permit or a farming permit. Certain developments that are part of primary farming activity, such as a dugout, a shelter belt or grain bins on a permanent foundation, do require a development permit if they do not comply with the setback requirements in the bylaw. If they do comply with the setback requirements, a development permit is not required. **UPDATE:** In

reviewing the draft land use bylaw the new County Council directed Administration to revise the bylaw so that the farm permit requirement is deleted. Instead of requiring a farm permit, the County Administration will educate the farming community about the development setback requirements, by posting the relevant information on the County's website, in County advertisements in local newspapers and in the County Newsletter.

5. Does the new bylaw protect agriculture?

The Municipal Government Act requires that a land use bylaw must consider the protection of agriculture. The new bylaw has a statement in every land use district that attempts to make people aware that the land use district may be adjacent to the Agricultural District and that agriculture takes precedence over all other developments and uses, and that people must plan their properties to minimize the impact of agriculture on them. The bylaw also has provisions for new multi-lot subdivisions to maintain certain setbacks and/or buffers from adjacent agricultural activities.

6. Does the new land use bylaw restrict agriculture in the County?

No it does not. The new Agricultural District has many more uses than before in an attempt to allow farmers to continue farming and also to diversify into other activities so that they can generate an income and continue to make a living off the farm.

7. Does the new land use bylaw direct all commercial and industrial development to the Town of Stettler?

No it does not. The new bylaw provides opportunities for a variety of commercial and industrial development to occur in the Agricultural District and in specialized commercial and industrial districts. In order to develop in one of these districts the land must first be rezoned. If the land is within the referral area of the Inter-municipal Development Plan with the Town of Stettler, then the Town must review the application. If the application is consistent with the Plan, there

is no reason why the development could not occur in the County. Outside of the IDP boundary, the IDP does not have an impact on where commercial and industrial development occurs in the County.

8. Does the new land use bylaw prohibit recreational vehicles at Buffalo Lake?

The new bylaw provides that all subdivisions at the lake are allowed to have Recreational Vehicles, except Buffalo View Estates. This is not a change from before. It is proposed that Council puts a moratorium on the issuance of any new development permits for Recreational Vehicles in Scenic Sands, Abbey Road and Buffalo Lake Meadows until next summer when the County can discuss with these community associations how they want to deal with Recreational Vehicles.

9. Is the new Land Use Bylaw too "Urban" for a rural municipality?

The new Land Use Bylaw does have urban style regulations, but not significantly more than what was in the old bylaw. The County of Stettler is not just a rural municipality with only agricultural developments. There are several compact residential subdivisions out by Buffalo Lake, some of which are adjacent to the Summer Village of Rochon Sands, there are four major hamlets that are "urban" in nature and there is "urban style" development in the County adjacent to the Town of Stettler. The County's new Land Use Bylaw provides regulations for these types of developments, just like the old bylaw did, perhaps just more specific and up to date. These regulations are either clearly worded to apply only to "commercial and industrial" development or Hamlet Residential development, or allow the Development Authority the discretion to not apply these regulations to agricultural and rural developments that don't need them. If the Development Authority in its wisdom applied these "urban style" regulations to any development and the applicant disagrees, they have the option to appeal to the Subdivision and Development Appeal Board, which is made up of County residents with no Councillors sitting on that Board.

10. Does the new Land Use Bylaw say that a person may be imprisoned for contravening the Bylaw?

Yes it does. The question should be if this provision is one made up by the County of Stettler or is it a provision that is mandated elsewhere? The answer is that the Municipal Government Act, a statute of the provincial government that mandates the adoption of a Land Use Bylaw by all municipalities, states that a contravention of a land use bylaw is an offence under the Act that makes a person found guilty, liable to a penalty. The Act goes on to state that the maximum fine for an offence is \$10,000 or imprisonment of not more than one year, or both. The County's new Land Use Bylaw basically follows this mandate of the provincial Act, except that in the County's Fee Bylaw the maximum amount of a penalty is \$2,000. Will the County throw you in jail if you contravened the Land Use Bylaw? The answer is no, the County does not have that kind of authority and does not consider such an act as part of our normal business. We would much sooner sit around a table and try to work things out. Ultimately though, the County does have the mandate under the Municipal Government Act to prosecute a person to the Courts of Alberta, if it is in the best interest of the County's taxpayers to do so. Does the County's new Land Use Bylaw provide that, if you were found guilty of an offence, the County may take your land from you by having the title revert to the County with or without compensation? No, it certainly does not however, the Municipal Government Act provides that a land title may revert to the County if the landowner has not paid their taxes. By implication, if you contravened the Land Use Bylaw and refused to remedy the contravention, the County may remedy it on your behalf and place the cost of doing so to your taxes. If you don't pay the taxes, the land title could revert to the County.

The new Land Use Bylaw rezoned some properties from the Country Residence Agricultural District to the Agricultural District. The reason for this is that over the past 23 years the County has not been consistent in when it requires a new acreage

to be rezoned and when not. Today we have many acreages, some across the road from each other, both being the first parcels out of a quarter section, and one is zoned 'Agriculture' and the other is zoned 'Country Residence Agriculture'. On one there are no restrictions on farming and the keeping of livestock, while the other one is severely restricted. When the County adopted a new municipal development plan in September 2009 it provided for the first parcel taken out of a quarter section to remain in the Agricultural District. Therefore, in order to treat every first parcel out of a quarter section the same, we are going back into history and offering those 'first parcel out' acreages that are in the Country Residence Agricultural District an opportunity to go back to the Agricultural District.

Anyone who has questions about the new Land Use Bylaw or requires clarification in reading and understanding the bylaw is welcome to contact Johan van der Bank, Director of Planning & Development at 742.4441 or email at jvanderbank@stettlercounty.ca.

Farm Development Setbacks

Please remember that you do not need a development permit for an agricultural operation as long as any structures such as hay sheds, graineries, livestock shelters, barns and shelterbelts meet the 125 foot setback from the centerline of the road. For more information, please contact the County's Planning & Development Department at 403-742-4441.

SAFE HARVEST



Harvest time is here – and with the peak of harvest season comes the annual peak of injuries and deaths of farmers and farm workers. People are stressed and rushed, equipment is in heavy use, and there seems to be no time to take safety issues into consideration. Remember, though, that it doesn't do you any good to bring in a record crop if you kill yourself in the process. Here are some tips on keeping safety first as you bring in the fall crop.

- Examine your equipment for dangerous parts – pinch points, pull-in areas, freewheeling parts or sections, and other moving parts. Be familiar with all equipment and read the safety manuals – and make sure farmhands have read them, too.
- Stay well-rested. It's difficult at harvest time, but fatigued brains make mistakes. Put other jobs off if necessary, and get the rest you need. A 20-minute nap after lunch can provide a much-needed vitality boost for the rest of the day.
- Shut down equipment and make sure all mechanized parts have stopped operating before climbing down.
- Inspect all your equipment thoroughly before starting work, particularly if the machine was put away in haste the day before.
- Keep charged and inspected fire extinguishers and first-aid kits on hand, and have emergency numbers posted on all equipment. Carry a cell phone – and make sure that you've registered your phone with 911 services in your county so that they know where your farm is geographically located.
- Check hydraulic equipment for leaks, and make sure tires are fully pressurized on all vehicles.
- Make sure lift cylinders on trucks and trailers are in good working condition before you put a load on them. Don't raise or lower truck or trailer beds anywhere but on a firm, flat surface.
- With these tips, some caution, and some common sense you can have a safe and productive harvest. Good luck and stay safe!

WHERE IS THE Water?



South-East Phase (Byemoor-Endiang)

After almost a year of delays due to weather and other unforeseeable setbacks, the entire South-East Phase is finally in the ground and ready for connections.

There are just over 30 farm sites with signed water agreements, and if you are one of them, looking to hook-up your water, please contact the Utilities Department at 403-742-4441.

Clean-up has now begun along all stages, but this process is of course a lengthy one. We will have to wait at least a year in order to properly address the settling and reclamation of disturbed areas. If you have any concerns regarding the clean-up of this waterline, please contact Garth Ennis at 403-742-4441.

We will also be completing upgrades to the Byemoor Lift Station in September to maintain a safe and reliable sewer system in Byemoor.



Central Phase (Botha-Gadsby-Highway 12-East)

Landowners in this area are anxiously awaiting some news on the status of this project. It began with landowners signing an agreement in early 2010, and once we had initial alignment and costing - the County realized we could save a lot of money by cooperating with the Gadsby Water Co-op Line. Through an intense, 8 month long negotiation, we have finally come to an agreement with the Co-op to use a portion of their lines to service our rural residents.

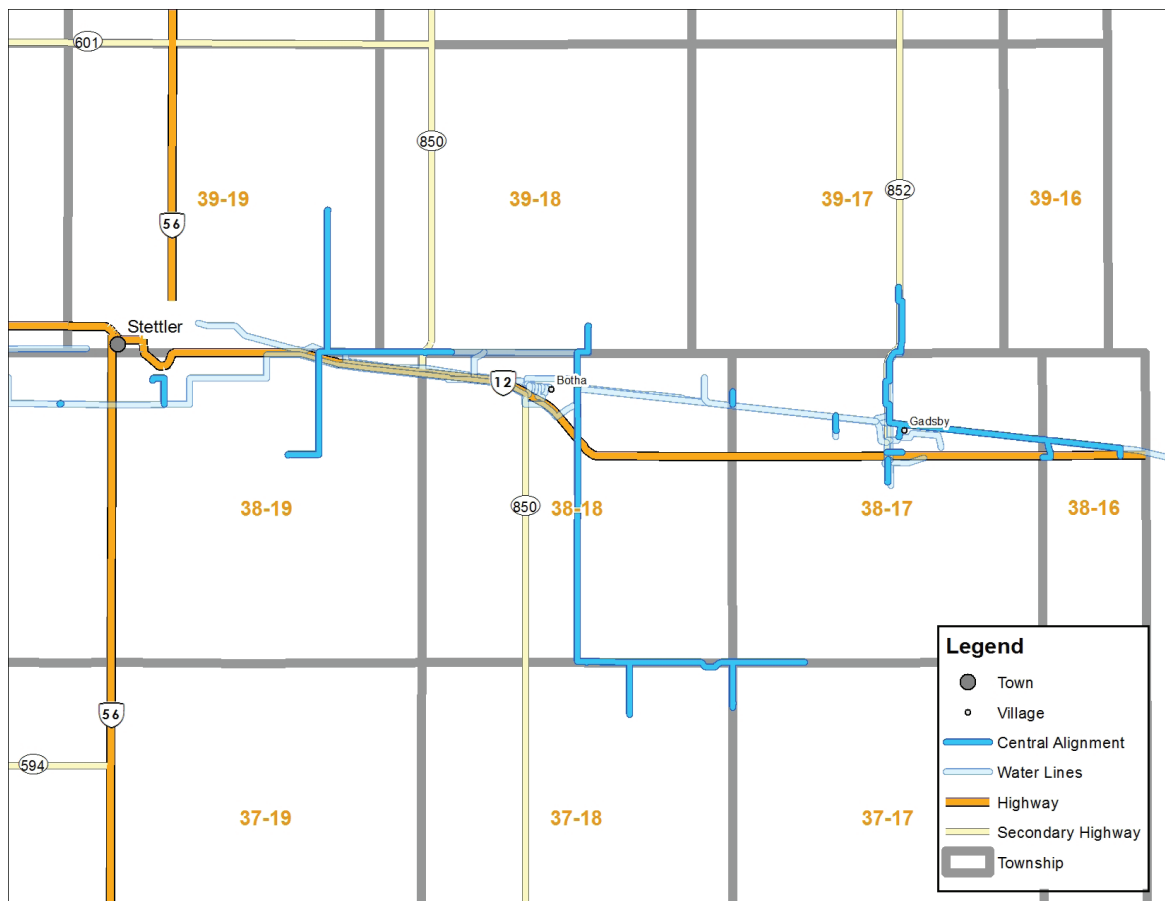
Once that was established, we re-aligned the waterlines, added a few new hook-ups for landowners and went to tender the project in August 2011.

There must be a lot of work out there for contractors, as we only received two tenders back with quite a price difference between them.

Chinook Pipeline: \$3,792,422.00

Nu-Edge Construction: \$4,543,012.58

We are awaiting Council's decision on September 14th, 2011 - but all indications point towards having the waterlines in the ground before the close of 2011, again, providing we have a very seasonal autumn. The start date is still unknown at this point, but we are working to have this project completed as soon as possible. We acknowledge that the wait for this waterline has been extensive.





COUNTY OF STETTLER



2011 – 2012 Photography Contest Rules and information

We want to see the County of Stettler through the eyes of our residents and invite you to submit photos as part of the 2011-2012 County of Stettler Photography Contest

From September 1, 2011 to August 24, 2012, we will be accepting photographs from our residents that may be used in future County of Stettler publications, including a calendar with all 12 winning photos.

Eligibility

The County of Stettlers Photography contest is open to all residents within the County of Stettler including adults (18 and up) and youth (17 and under) there is no special category for youth photos.

Prizes

During each phase, three photographs will be selected for a prize package valued at \$150 each. At the end of the contest the twelve photos will be entered for a grand prize of an iPad 2. The winning photos will be used in a special edition County of Stettler calendar.

Categories

During each phase of the contest, residents are invited to submit photos according to the seasonal themes in the following categories:

- Animals and nature
- Landscape
- Parks and tourism
- Sports and recreation
- Celebration
- miscellaneous

Timelines

- Phase 1: September 1, 2011 - November 25, 2011
Theme: "Falling for the County of Stettler"
Judging: November 28-30, 2011
- Phase 2: December 1, 2011 - February 24, 2012
Theme: "The County of Stettler is a Winter Wonderland"
Judging: February 27-29, 2012
- Phase 3: March 1, 2012 - May 25, 2012
Theme: "The County of Stettler Springs to life"
Judging: May 28-31, 2012
- Phase 4: June 1, 2012 - August 24, 2012
Theme: "Sweet Summer in the County of Stettler"
judging: August 27-31, 2012

F . A . Q .



Why have a Photography Contest?

Our County is as picturesque as it comes. There are so many areas, activities, landscapes and breathtaking views that we couldn't possibly capture them all ourselves. We are turning to our residents, the ones who know our County the best, to submit photos of what they believe represents our way of life. We want to use these photos to represent our County on published material and our website, which are people's first impressions when they first explore our wonderful communities.

Who Can Enter?

County Residents. Meaning, you live within the borders of the County of Stettler, and not within the borders of another municipality. Town residents are not eligible for this contest. There is also no age restriction. Parents must sign the guardian release on the entry form, but there is not age restriction. (there is no special category for youth either - all are judged within one general category) Do you have to be a professional or own a professional camera? NO! That is the whole point. We have so many people who love to capture their memories on camera, and we are just asking you to share them with us. Whether you are out taking photos of nature, your grandchildren or your favorite neck of the prairies, we just want to share in your experience and your memory. We have made it easy and straight-forward to enter, and there are 4 contests wrapped up into one, so you can enter multiple times!

Why are there FOUR different phases?

We know that each season brings a unique dynamic to our county. The landscape, our activities and

our livelihoods are so dependent on the weather we want to ensure that we give every opportunity for people to submit their photos from each season. We will also be publishing these photos in a calendar - available to County residents and want the pictures to depict the various seasons our County experiences.

How Do I Enter?

You submit your photos via email to photos@stettlercounty.ca. You can enter as many photos as you like for each phase, however, only one photo of yours can be chosen as the winner for each phase. Your entry must accompany the two-page entry form. Only one form per person is needed, and you can list all your entries on one form. A new form will be required each new phase. You can download the rules, guidelines and the entry form from our website at www.stettlercounty.ca. We will also accept printed photographs. They must be 5X7 prints. If you submit electronically, we will not require a printed copy as we will make our own.

How Will You Choose The Winners?

Each phase will have 3 winners. Two will be chosen by a panel of judges. The contest will be judged anonymously (in other words, the judges will not know if the picture belongs to you until after judging is completed). The third winner will be chosen by the public through Facebook. Each phase will have a 2 week voting period, and the one with the most votes will win the third spot!

Where Do I get More Information?

Call the County Office at 403-742-4441 and talk to Shawna Benson. Alternatively, you can ask questions via facebook at www.facebook.com/stettlercounty or by email at photos@stettlercounty.ca.



DISTRACTED DRIVING:

What EXACTLY can I do?

As you have no doubt been hearing, on September 1st, 2011 Alberta enacted the distracted Driving law. While many people know that they can no longer talk on their cell phones, many of us still have more questions regarding the law and its impact on our lives. Here are a few of the most common questions asked about the new legislation.

What activities are not allowed while driving?

- talking on a hand-held cell phone
- texting/e-mailing
- using electronic devices like laptop computers, video games, cameras, video entertainment displays and programming portable audio players (e.g., mp3 players)
- manually entering information on GPS units
- reading printed material like a book or a magazine
- writing, printing or sketching
- personal grooming like combing your hair, applying makeup or brushing your teeth
- using a 2-way radio or what is commonly referred to as a CB (Citizen's Band) radio (some exemptions apply)

What activities are allowed?

We are not talking about penalizing drivers for taking a sip of coffee, chatting with passengers or blowing their nose. We are talking about drivers who decide to put themselves and others at risk by watching movies, browsing for and downloading 'apps', applying makeup or shaving all while trying to navigate through traffic.

These activities are not specifically restricted under the law:

- using a cell phone in hands-free mode - this means the device is not held in the driver's hand and is activated by voice or a single touch to the device
- using an earphone — if it is used in a hands-free or voice-activated manner
- drinking beverages, such as coffee, water or pop

- eating a snack
- smoking
- talking with passengers
- listening to a portable audio player – as long as it is set up before you begin driving

using the following:

- a GPS navigation system – as long as the system is affixed to the vehicle and programmed before you begin driving or the system is voice activated. You cannot hold the unit or manually enter information while driving
- a collision avoidance system
- a gauge, instrument, device or system that provides information about the vehicle's systems or the vehicle's location
- a dispatch system for transporting passengers
- a logistical transportation tracking system that tracks vehicle location, driver status or the delivery of goods for commercial purposes
- calling emergency services, such as 911 with a hand-held cell phone
- using 2-way radios or hand-held radios, such as those commonly referred to as CB (Citizen's Band) radios, when escorting oversized vehicles, to contact one's employer, or when participating in search, rescue and emergency management situations.

Are there any exemptions to this law?

Yes. Drivers who talk on hands-free radios, phones or hands-free radio communication devices won't violate the law. In addition, radio communications, such as those commonly referred to as CB (Citizen's Band) radios, will be allowed for certain commercial purposes, to maintain contact with one's employer and search and rescue services only. All drivers will be able to use hand-held devices to contact 911 emergency services and this law will not interfere with the official duties of emergency service personnel including enforcement, fire and medical services.

What is the fine for distracted driving?

The fine is \$172 for this offence. This amount includes a fine of \$150 plus the 15 percent victims' surcharge. This fine is in keeping with the fines for other traffic violations.

Are there demerit points for this offence?

No. It is felt that the dollar fine will encourage drivers to focus on driving. Drivers that exhibit what is deemed to be more serious or risky behaviors could be charged with 'driving carelessly' under the Traffic Safety Act. The penalty for the existing 'driving carelessly' offence carries six demerit points and a fine of \$402.

If a driver does commit a moving violation while engaged in one of these activities, or any other deemed as a distraction, they could receive two tickets - one for distracted driving, and one for the moving violation

Does this law apply to drivers who are eating?

The intent with this legislation was to be practical, effective and enforceable. Drivers can still have a snack while driving. However, the general distracted driving provision is discretionary to allow flexibility for law enforcement. In situations where a driver is, for example, holding a bowl of cereal in one hand and a spoon in the other, police could reasonably argue this activity is comparable to the specifically banned activities of reading, writing and grooming and lay a charge.

Can I drive with my pet in the vehicle?

Yes, as long as the pet is not interfering with the actions of the driver. However, the general distracted driving provision is discretionary to allow flexibility for law enforcement. In situations where a driver is, for example, holding a bowl of cereal in one hand and a spoon in the other or becomes too involved with their pet, police could reasonably argue that the distraction is comparable to the specifically banned activities of reading, writing and grooming and lay a charge. Also, existing legislation does have provisions for distracting pets in the vehicle. For the safety of both pets and road users, it is best if pets are secured in an appropriate pet carrier.

What do you mean by grooming and attending to personal hygiene?

This would apply to drivers who are doing things like flossing their teeth, putting on makeup, curling their hair, clipping their nails, or shaving.

Can I be charged if I am just holding my cell phone or PDA?

Yes. Drivers who are holding a cell phone or PDA, even if the phone is powered off, can be charged. This applies to ALL hand-held electronic devices, such as laptop computers, video games, cameras, video entertainment displays and portable audio devices, like MP3 players.

Can I park on the shoulder of a highway to make a call?

On provincial highways, outside of an urban area, section 43 of the Use of Highway and Rules of the Road Regulation applies and vehicles are not permitted to park on the shoulder of a provincial highway except in an emergency. This is also for safety. If you have to make a phone call, do so at a rest area, or when you stop for gas or for a bathroom break. Alternately, have your passenger make the call. Provincial highways are typically numbered roadways (e.g., Highway 2), but they may also be known by other names (e.g., Queen Elizabeth II or the Trans-Canada Highway). Municipal parking bylaws vary from place to place. You will need to consider the parking bylaws for that area before pulling over.

Can I send a text message or comb my hair when I am stopped at a red light?

No. You cannot engage in distracting activities when stopped at a red light, delayed in traffic or waiting for a train. You are still driving and engaged in a traffic situation. To be compliant with the law drivers need to be legally parked before engaging in the restricted activities.

If I received a conviction for a distracted driving offence, will it appear on my driver's abstract?

Tickets for this offence will be issued to the driver of the vehicle (not the registered owner). At this time, distracted driving convictions will not appear on driver's abstracts that are publicly available through registry offices. Also, for carriers authorized to operate commercial vehicles, these convictions will not appear on the carrier profile. Please note, we will be monitoring convictions for distracted driving and may change these policies in the future.

Go to www.transportation.alberta.ca/distracteddriving.htm for more information on Alberta's new distracted driving legislation



Operation and Inspection

School bus safety is taken very seriously in Alberta.

Alberta school buses must undergo a "bumper-to-bumper" safety inspection every six months. This semi-annual inspection has been required in Alberta since 1982. School bus inspection procedures and performance standards review everything from the bus exterior, body, doors and seat conditions, to fuel systems, brakes, fire extinguishers and contents for first aid kits.

A driver of a school bus must inform the carrier responsible for the vehicle if any defect or deficiency that would affect the safe operation of the vehicle is detected. The driver must also check to ensure appropriate repairs were made.

Alberta Transportation's transport officers, and enforcement agencies, carry out random roadside inspections to ensure regular school bus safety inspections and maintenance plans are effective. In addition to federal and provincial safety equipment standards, the province and school boards work jointly on specific school bus driver licensing, qualifications and training to keep children safe.

Motorists

- Motorists should always watch for children crossing the road and be prepared to slow down or stop.
- The speed limit in most school zones and playgrounds is 30 kilometers per hour. Pay attention to posted speed limits.
- Alternately flashing amber lights means a bus is slowing down to stop. Do the same.
- No matter which direction you are coming from, STOP whenever approaching a stopped bus with activated alternately flashing red lights - unless the bus is on the opposite side of a divided highway.
- Driver courtesy goes a long way. By simply being alert and cautious when approaching a school bus, motorists are contributing to school bus safety.

Kids and Parents

- Listen to the school bus drivers - they're in charge.
- On the bus, keep the noise down, especially at railroad crossings and intersections. Stay seated, face forward and don't throw things inside the bus or out bus windows.
- Stay out of the danger zone until the bus driver lets passengers know it's safe to get on. Children are too close if they can touch the bus.
- Move away after leaving the bus.
- Develop a plan as a family in case the kids miss the bus. And never take rides from strangers.

FACTS

Most School Bus collisions involve a bus being struck by another vehicle from behind

.....

The greatest time of danger to students on the roadways is during the loading and unloading of a school bus

NorQuest College is Coming to Town!



NorQuest College is partnering with Campus Alberta to offer a new Office Professional program to residents of Stettler. The Office Professional program quickly provides you with the skills and knowledge to become an efficient professional in today's fast-paced business world. During this 16-week, non-credit program you will learn essential office skills such as business office procedures, software applications and business communication. You will also be introduced to advanced research skills and specialized skills ranging from bookkeeping to project management. Put these skills into practice during your two-week work experience. Make real-world business connections and gain valuable on-the-job experience.

- 16-week certificate
- Two-week work experience
- Full-time studies
- Starts October 17, 2011
- Blended delivery: face to face, video conferencing and online delivery
- Study at Campus Alberta Central - Stettler

Career Potential

Students who complete this 16-week Office Professional program may find employment as an administrative assistant, customer service representative, office clerk, data entry specialist, receptionist or assistant project coordinator. Many more opportunities exist.

Program Schedule

Classes: October 17 – December 16, 2011
 Christmas break: December 16, 2011 – January 2, 2012
 Classes: January 2 – February 3, 2012
 Practicum: February 6 –17, 2012
 Classes run from 9:00 a.m. to 4:00 p.m. daily.

Program Outline

Computer Software Applications	4 weeks
Microsoft Office – Excel	2 weeks
Business Office Procedures and Interpersonal Skills for Employment	2 weeks
Business Writing and Research	2 weeks
Accounting	2 weeks
Project Assistance Relations	2 weeks
Work Experience for Office Professionals	2 weeks

For information and to register visit www.norquest.ca/coned, call 780-644-6480 or email michelle.braun@norquest.ca.

TAXES DUE!

OCTOBER 31ST, 2011

There are many different ways that you can pay your property taxes and accounts receivable in the County of Stettler. We accept payments by cash, cheque, visa, mastercard, debit card, online banking or at most major financial institutions. If you are paying your taxes or accounts receivable online please ensure that you are paying them to the County of Stettler No. 6. For accounts receivable, use your customer number and for taxes use either your roll number or owner number. This will assist us with applying the payment to the appropriate balance. If you cannot find our name in the list of payees on your online banking please contact the County office and we will be happy to assist you.

If you are paying bills online the following financial institutes accept County of Stettler payments:



If your financial institute does not have the County listed for accepting payment, please contact our office and we will work to get them added.

Toxic Round-Up

October 6th, 2011

1:00 PM - 5:00 PM

County of Stettler
Ag. Services Building
6602 - 44 Ave

We will be collecting HOUSEHOLD toxic Garbage including old cans of paint, household cleaners and other hazardous material. For more information, Please call the County of Stettler at 403-742-4441

PUBLICATIONS MAIL AGREEMENT 41398593

RETURN UNDELIVERABLE CANADIAN ADDRESSES TO:
COUNTY OF STETTLER NO. 6
BOX 1270
STETTLER, AB T0C 2L0