

Fall 2013

Stettler County Connection

INNOVATIVE

ROAD CONSTRUCTION

pg 22

**MUNICIPAL
DEVELOPMENT PLAN**

Revisions

pg 26

RECYCLING

Stettler Eco-Centre

pg 16

**Municipal
Election**

2013

pg 10



PAYING TAXES

There are many different ways that you can pay your property taxes and accounts receivable in the County of Stettler. We accept payments by cash, cheque, visa, mastercard, debit card, online banking or at most major financial institutions. If you are paying your taxes or accounts receivable online please ensure that you are paying them to the County of Stettler No. 6. For accounts receivable, use your customer number and for taxes use either your roll number or owner number. This will assist us with applying the payment to the appropriate balance. If you cannot find our name in the list of payees on your online banking please contact the County office and we will be happy to assist you.

If you are paying bills online the following financial institutes accept County of Stettler payments:

- Royal Bank of Canada
- TD Canada Trust
- Scotiabank
- Credit Union's
- CIBC
- Bank of Montreal
- ATB Financial

If your financial institute does not have the County listed for accepting payment, please contact our office and we will work to get them added.



COUNTY CONNECTION

INTRO

The harvest season is upon us! It has always been my favorite season. Growing up on my farm in Endiang, shorter days, crisp air and changing leaves not only signalled the end of our lazy summer days (who am I kidding - farm kids never had lazy summer days ... I spent more time changing cultivator shovels and painted more fence posts in the summer than I did relaxing!) but it also signalled my favorite time of the year ... eating supper in the field season!

While my grandpa, mom and dad worked from dawn until dusk trying to get our crops off ... We stuck around the farm and helped load and unload the truck with lunch, supper and midnight snack goodies. We bombed out to whatever quarter they were working in and laid out the supper spread which resembled a royal feast just about every time. My grandma was an excellent cook - and I remember, corn on the cob, strudels, baked potatoes, roast beef, macaroni salad, and fried chicken ... and thinking about it right now is making my mouth water. Hands down, my favorite part of harvest.

As harvest season gets underway, I wish you all the best weather in the world ... warm sunny days and cool but not too dewy nights, storm-free weeks, a bountiful harvest and all the delicious meals you can eat while bringing in the harvest.

Remember to do your work safely, your family is relying on you to be there for Christmas, and upcoming birthdays, and to continue to teach them about farming, and the rural way of life.

Be aware of our little future farmers and community members as they head back to school on their big yellow school busses. Heed the signs, follow the rules and use common sense.

Be thankful for our rural way of life, and the lifestyle living in the County of Stettler offers us all!

Happy Harvest!

Sincerely,

Stettler County Connection

Spring/Summer 2013

Volume 3 Issue 1

Editor-in-Chief

Tim Fox

Managing Editor

Shawna Benson

Printed by

Kathy's Printing Service

All Rights reserved. Any reproduction of the contents without written authorization from the publisher is strictly prohibited. The publisher cannot be held responsible for any errors or omissions found within this newsmagazine, or for loss of, or damage to, unsolicited material submitted by readers.

Availability: Current Issues of County Connection can be obtained from the County of Stettler Administration Building while supplies last.

Subscription: County Connections is delivered free of charge to taxpayers, with exception to those who do not live in the Province of Alberta or have unsubscribed from our mailing list. If you wish to receive future copies, please make the request to the Managing Editor at sbenson@stettlercounty.ca. You may also view the current and back issues of the County Connection on our website at www.stettlercounty.ca





“ I encourage you to take an interest in the upcoming election, whether it be issues, voting or are considering running for election. ”

Reeve Nixon
Donalda-Red Willow

3

REEVE'S RAMBLINGS

Fall is almost here again and for the most part things look good in the County of Stettler.

The rains of the last couple of months have been trying for those putting up hay but it has sure made for some great looking crops. Farmers though have to remain diligent. At the time of this writing there is a massive spraying campaign underway by air and ground to halt the Bertha Army Worm infestation. These larvae can devastate a canola crop in a matter of days.

The rain this summer has also been a challenge to Public Works and some of the projects they had planned. As is the case with our neighboring municipalities, we are always looking for dust control products and road surfacing products that are affordable and environmentally friendly. The trials will be done on roads in different areas of the County and roads with varying degrees of usage.

The "complaint line" has worked very well for council, administration, and public works. Calls or emails that come in are put up on a board and are dealt with promptly. My hat is definitely off to Dennis and Randy and their staff for the timely fashion in which they deal with these complaints. Ratepayers still need to be patient in getting low use roads and machinery roads repaired or graded. Because of the cost of moving equipment and the time involved, the repair crews like to be able to do all the work in each area while they are there.

This October brings another municipal election and decisions have to be made. In my case I have decided to run for councillor again but with the new four year term in place for the next council it was not a quick decision. Even though I have been in municipal politics for only six years and consider myself a rookie, when I look in the mirror I realize I am no longer a "kid ". And in four years from now I will be even less a " kid ";

however, I have enjoyed the last five plus years and look forward to whatever the future may hold.

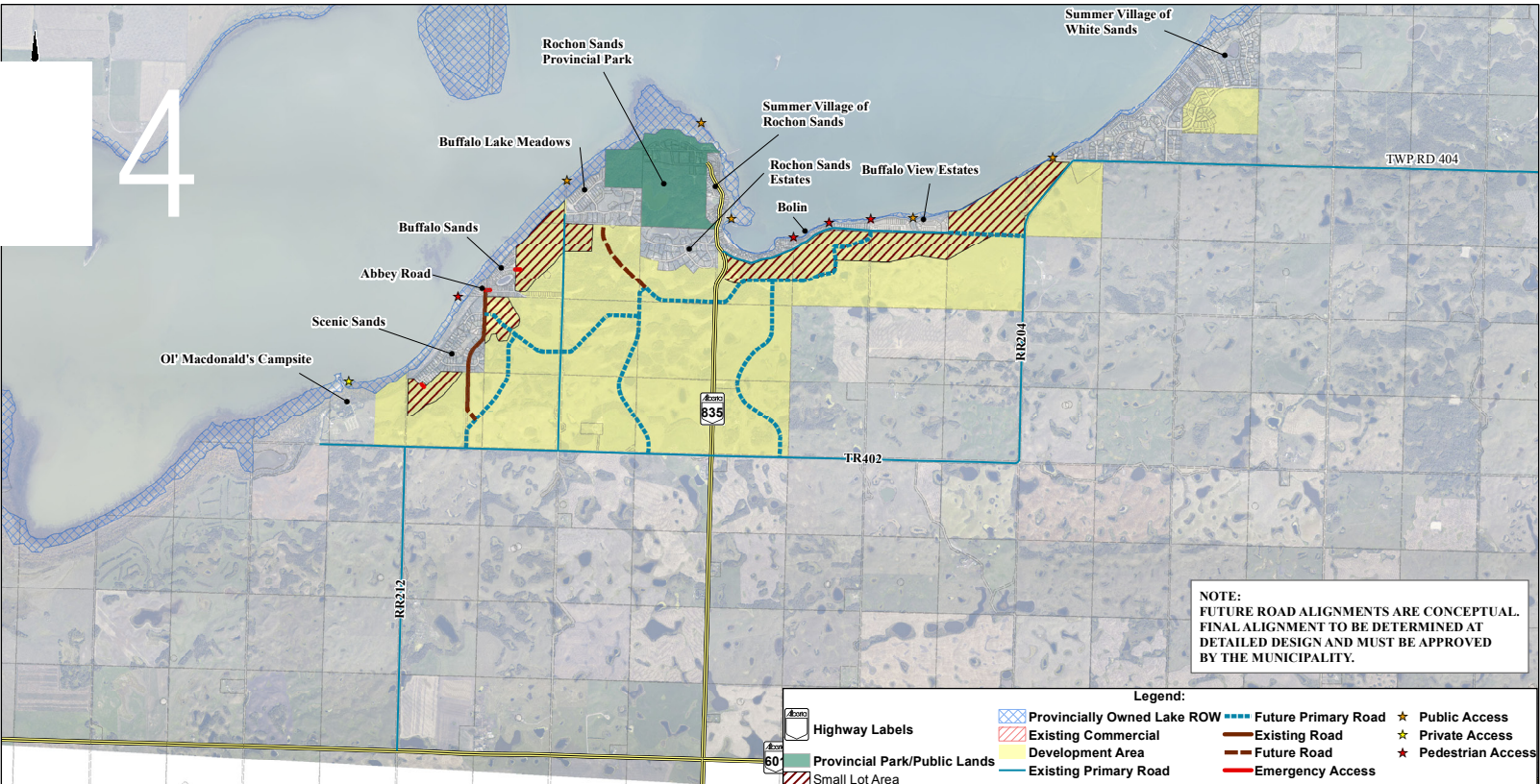
At this time I would like to express my appreciation to council, administration, and staff for the respect they have afforded me in the last three years as Reeve of the County of Stettler.

In my opinion, Council has worked very well together. We all have our own personal opinions on every subject and we are not hesitant to express them but when a decision is made we respect that decision whether the vote was close or not. I believe it is very important for a council to work well together and at the end of the day, bodes well for the County of Stettler.

Administration has been very patient with me as a rookie councillor and rookie reeve and have walked me through some of the duties of chairmanship and other details of office I did not know or perhaps had forgotten. They have guided me in what to say or what not to say to media or Government Ministers but in the end always backed me up whatever my statement might have been.

The staff of the County of Stettler have been, from day one, friendly and respectful to me and I am proud to be a part of this organization.

I would also like to thank the ratepayers of the County of Stettler for their support of me in the past several years. I encourage you to take an interest in the upcoming election, whether it be issues, voting or you are considering running for election. Educate yourselves on any election issues so the best interests of the County of Stettler are represented when you vote. And please vote!!!



BUFFALO LAKE SOUTH SHORE INTER-MUNICIPAL DEVELOPMENT PLAN

Landowners in the Buffalo Lake area may be interested to know that the three municipal Councils for the Summer Village of Rochon Sands, the Summer Village of White Sands and the County of Stettler No. 6 have adopted the Buffalo Lake South Shore Intermunicipal Development Plan (South Shore IDP). The Plan addresses aspects such as the natural environment, water supply and sewage disposal, public access to the lake, land uses and density distribution, and major roads. The South Shore IDP is available on the County website at <http://www.stettlercounty.ca/county-services/planning-and-development/plans-and-bylaws>. Please contact the County of Stettler Planning and Development Department at 403.742.4441 should you have any questions or comments regarding this Plan.

Over the next few years the Planning Committee has a number of outstanding issues to address.

1) A Shoreline Management Plan for the lakeshore adjacent to County-owned Environmental Reserve will be prepared in consultation with community associations and landowners. This plan will address more details regarding lake access at Scenic Sands, Buffalo Lake Meadows and Buffalo View Estates. It will include aspects such as the type of improvements that are required at these access points (e.g.

public washrooms, picnic tables, garbage receptacles), the use and maintenance of trails and pathways leading to and between the lake accesses and the regulation of seasonal docks/boat lifts/piers.

2) Improvements to Highway 835 and Highway 601 and the intersections of County roads onto these highways will be required by Alberta Transportation as new subdivisions are approved. More details will be discussed with Alberta Transportation regarding when these improvements will be triggered, who will pay for which type of improvements and how the three municipalities could recollect the cost of these improvements from developers.

3) Business plans will be prepared for bringing regional water and regional sanitary sewer systems to the Plan area. This will include aspects such as the level of service required or expected by the three municipalities, the cost of delivering these services, and route options. It is also important to devise strategies of how these services will be financed.

4) A stormwater master plan will be prepared for the Plan area. This will ensure that stormwater management facilities are constructed by developers to comply with the objectives and standards of the master plan and will assist in the review and approval of individual subdivisions.



5

4-H BURSARY

FOR GRADUATING HIGH SCHOOL STUDENTS IN 4-H

The County of Stettler Agricultural Service Board has a new Bursary available to students within the County of Stettler.

The goal is to encourage high school students to volunteer their time towards their community and be recognized for their commitment to the rural lifestyle.

One \$500 bursary will be awarded annually to a student who has both been enrolled in a post-secondary institution and has been an active member of the Stettler & District 4-H Club during their last year of high school.

Applicants must provide:

- a letter of enrollment and program information issued from their post secondary institution
- a letter from their high school confirming graduation date

- a letter from their Stettler & District 4-H club leader confirming their active participation in a 4-H club;
- A photograph of the applicant
- Two personal reference letters, one of which must be a 4-H leader.

Application Deadline is May 15 of each year.

The top three applicants will have a meet and greet with the Agricultural Service Board members in June and the winning applicant will receive their award at that time.

Application forms and more information can be obtained on our website at www.stettlercounty.ca or by contacting the Director of Agricultural Services, Quinton Beaumont at 403-742-4441 qbeaumont@stettlercounty.ca

6



RECREATION SPECIAL PROJECT FUNDING

Applications are being accepted from non profit community groups and organizations within the County of Stettler for grants under the Recreation Special Project Funding initiative.

This year there is \$50,000 available for projects that include repairs, upgrades and renovations of facilities.

The fund was established in 2006 in order to set aside funds to help with the construction and enhancement of recreational facilities in our rural communities. The County currently renews the fund through taxation every year.

Any Community Group, associations or non-profit society located outside the Town of Stettler but within the County of Stettler are eligible to apply for funding, providing they have been in existence for at least two years by the October 31st, deadline.

Due to high volumes of applications received and the limited funds, not all eligible projects will receive funding and approved projects may receive less than the requested amounts. Also of note, if your renovation addresses a building code compliance, it will be given preference.

Application forms, guidelines and criteria are available on the County of Stettler web site www.stettlercounty.ca - under County Services and Recreation. You can also pick up an application form at our Administration Office at 6602, 44 Avenue, Stettler, Alberta.

The deadline for submissions is October 31st, 2013. If you have any questions or need assistance please contact Phil Holton, Director of Recreation at 403-742-4441 (office) or cell 403-740-5667 or via e mail at pholton@stettlercounty.ca.



Clubroot on Canola Root



Clubroot on Turnip

PREVENTING CLUBROOT

It's your pain in the butt pest inspectors reminding you to check your fields for Clubroot. As harvest hits us, we find ourselves running pretty hard to keep up, the great thing with doing your own clubroot surveys as harvest is on, is that as you are refueling, checking grain samples, unloading the hoppers or trucks, you can grab one, three, five or twenty samples as you wait! Even during the great harvest meal in the field, on your way to the truck.... Grab a handful of stalks and take a good hard look at the roots.

Scout your fields and gardens. Clubroot is a condition that affects the roots of plants in the brassica family. Canola, cabbage, cauliflower, turnip and mustard are all in that brassica family of plants and are affected by clubroot. It upsets the growth of a canola or mustard plant, starving the plant of needed nutrients, so that seeds do not fill out and instead large unusual root swellings are produced. When it impacts garden vegetables such as cabbage or cauliflower, the usual heads do not form. But low level infestations do not always show up as reduced yields right way. When farmers or gardeners have a chance, particularly when the growing season is over, they should pull up plants and check for these large lumps forming on otherwise normal roots. Any suspicious plants should be brought in to the County for further inspection.

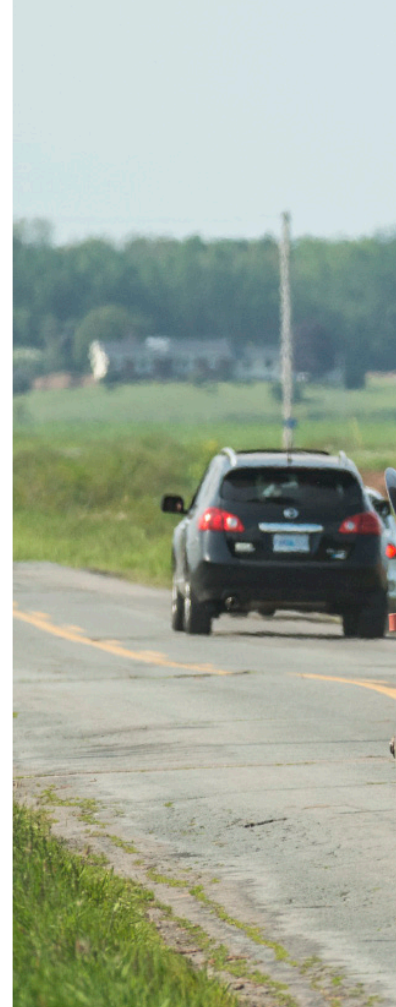
Follow proper rotations. While it is true that clubroot spores can stay in the soil for decades, avoiding putting host plants into the same soil year after year can reduce the production of those spores. For canola producers it means seeding canola only once every four or five years; for gardeners

it means moving the cabbage patch yearly. Using varieties that are resistant to clubroot will also reduce the population of the pest in the soil.

Clean your equipment. The most likely spread of clubroot from place to place is by soil. So now that we have it in the County, it would be good farming practice for producers and custom operators to knock off any dirt from seeding or other farm equipment. Producers who have been found to have clubroot positive fields have been instructed in how to disinfect their equipment after working on affected fields. Landscapers who contract to cultivate gardens should also follow soil removal precautions.

Ensure others are aware. There can be a lot of traffic in fields throughout the year. Oil industry, recreational vehicles and hunters regularly cross or otherwise disturb soil. Ensuring no one accesses your field without permission, and having equipment cleaned before entering a quarter, field or garden will help to minimize the spread of clubroot. The Agricultural Service Board can assist you with ways to minimize access. In addition, there will be meetings dealing with clubroot in the near future. Making sure people know that clubroot is everyone's issue and encouraging people to attend these information sessions will help to reduce the spread of this serious condition.

So, while the discovery of clubroot in the County is not good news, some basic information and precautions will help minimize the impact of this disease for all of us.



SHARE THE ROAD

Rural Road Safety

More homes being built in rural areas near farms equals the chance for more collisions between farm equipment and personal vehicles.

The need to know your rural road safety guidelines also increases.

You know the scenario: Transplanted urbanites and suburban dwellers often find themselves in traffic with large, slow-moving farm equipment. They feel held up on their way to work or another destination and take unnecessary risks.

If you live, work or commute through an area populated with farm fields, drive with caution, especially during spring planting and fall harvest seasons.

A few rural road safety considerations:

- Slow down as soon as you spot a piece of farm equipment. In fact, if you see something ahead that is neither car nor truck, slow down--at least until you have identified the object.

- Watch for hand signals. Just because a tractor veers right does not mean the operator is pulling over for you to pass. The sheer size of farm equipment often dictates the necessity of wide turns--hence the veer right. If a tractor operator is signaling you to wait, trust him. He has a much higher vantage point than you.
- Be aware of the triangular Slow-moving-Vehicle (SMV) sign. Only use SMV signs on slow moving vehicles, not to mark driveways or for other non-vehicular uses. Not only are these actions illegal in many areas, they devalue the purpose of SMV signs, putting producers at risk when moving equipment.
- Watch for flashing amber lights. This type of light often marks the far right and left of farm equipment. Also watch for reflective tape marking extremities and sides of equipment.
- Do not speed past farm machinery. Even when you may pass safely and legally, the turbulence created



by your vehicle may cause the machinery to sway and become unstable.

- Do not pull out in front of slow moving vehicle and then slow suddenly. A tractor pulling a grain cart does not have the maneuverability of a car. Did I mention size? Make sure you have ample space to pass. As with any passing operation, check the rear-view mirror before returning to your travel lane.
- Do not expect equipment to run partly on the road shoulders. Driving with one set of wheels on the pavement and one set on loose-surfaced shoulders substantially increases the risk of overturn or other accident.

When you meet a piece of equipment on the road, try to find a safe spot to pull over to allow safe and easy passage of the implements. It's someone's life. It's someone's livelihood. And it's the meal we all eat tonight.

Reminders for Farmers

Farmers can consider these rural driving safety tips:

- Make sure all safety lights are clean and working. Replace any worn SMV emblems. Add reflective tape to your equipment.
- Try not to group pieces of equipment together when traveling on high-traffic roadways. Motorists need time to pass and return to their lane. Space equipment to allow motorists to pass one unit at a time.
- Provide a follow car with hazard lights flashing. People respond better to this type of escort.
- Limit movements of equipment during evening or peak traffic hours.
- Keep lights on and flashing, even in the daytime.

A farmer may be required to transport equipment through small towns or developments. Talk to local law enforcement officials. Don't expect them to drop what they are doing, but with ample warning, don't be surprised if traffic is halted to allow your safe passage of larger pieces of farm equipment.

ELECTION 2013

Running for Council

Being a member of council is a great opportunity to get really involved in the community! There are many reasons, such as:

- Having Interest in local government and serving your community
- Having direct input in community decisions
- Wishing to take the next step after community involvement and volunteerism
- Having broad community interests
- Influencing changes that benefit your community and ensure its sustainability
- Putting forward new ideas for debate and change
- Making a positive difference in the quality of life in your community
- Providing a voice for your community with other levels of government
- Being part of a team that makes decisions that affect all aspects of community life

As a member of council you will have the opportunity to significantly influence the future of your community. Your power as a member of

council depends on your ability to persuade the other members of council to adopt your view. All decisions must be made at meetings, held in public, at which a quorum is present. Decisions are made with a simple majority vote of all those present at the public council meeting, and each member of council, including the Reeve, represents one vote. All votes are recorded in the minutes. So, at a typical meeting, at least four of the seven councillors present must vote in favour of a decision for it to pass.

“Nomination Day is September 23rd, 2013. Nomination Packages and Forms are available at the County Office during regular business hours.”

As an individual member of council you will not have the power to commit the County to any expenditure nor can you personally direct the activities of County employees. Any promise you make as part of your election campaign that involves municipal expenditures or the activities of the employees, can only be carried out if you can

convince a majority of council that it is a good idea.

If you are running with some kind of reform in mind, you will have to become familiar with what exists, how it has been created – by bylaw, resolution or tradition – and why it exists, before you will be able to start discussing your changes.



VOTER IDENTIFICATION

New for 2013

The Voter Identification requirements have changed for 2013.

In order to receive a ballot, voters are now required to produce one **piece of identification** to confirm both the voter;s name and current address.

Types of ID accepted are as follows:

1. Government issued identification which contains your photograph, name and current address. This includes a Driver;s License or an Alberta Identification Card.

OR

If you do not have a government issued ID available, we will accept identification that confirms your name and address:

- Utility Bill (Telephone, Hydro, gas, Water, Television)
- Bank/Credit card statement or personal cheque
- Income/property tax notice
- Insurance Policy Card
- Vehicle Ownership, registration or insurance certificate
- Government Cheque or Pay Stub
- Statement of Government Benefits
- Pension Plan Statement
- Correspondence issued by a school, college or university
- Letter from public curator, public guardian or public trustee
- Attestation of residence, Letter of Stay, admission form or statement of benefits issued by a shelter or soup kitchen



VOTING INFORMATION

Voter Eligibility

To be eligible to vote in the County of Stettler, you must:

- Be at least 18 years of age on election day
- Be a Canadian Citizen
- Have been a resident of Alberta for six consecutive months preceding election day
- Be a resident of the Ward you are voting in on Election Day
- Have not previously voted in this Election

Note that residence means the place where you live, sleep and intend to return to after an absence, not where you work. If you live, sleep and return to two places, you may choose only one location where you would like to vote.

Rules of Residence

Your Place of residence is determined by the following rules:

- You may only have one place of residence
- “residence” is described as a place where you live, sleep and intend to return to after an absence, not where you work. If you live, sleep and return to two places, you may choose only one location where you would like to vote
- You do not lose your residence by leaving a person’s home for a temporary purpose
- Students who attend an educational institution, temporarily rents accommodations in the location of their educational institution and have family members who are residents of the County of Stettler are considered residents along with their family members.

Advance Vote

Anyone who believes that they will not be able to attend the voting station on election day may attend one of the advance votes.

All wards are eligible to vote at the advance voting stations located at the County of Stettler Administration Building.

Tuesday, October 15, 2013

Friday October 18, 2013

8:30 am - 7:00 pm, each day

County of Stettler Administration Building

6602 - 44 Avenue, Stettler AB

Mail-In Ballots

Voters who unable to vote at an advance vote or at the voting station on election day because of physical incapacity, absence from local jurisdiction or being a returning officer, deputy returning officer, constable, candidate, official agent or scrutineer who may be located outside of their ward may apply to vote by mail-in ballot.

You can request a special ballot by filling out the prescribed form at the County of Stettler Administration Building. This request can be made anytime prior to Election Day and the Sealed Ballot must be received by the Returning Officer before 8:00 pm on October 21, 2013 to be considered.

Incapacitated Voters

Election officials will attend the home of any elector who, due to physical incapacity, is unable to attend the voting station. This service will be offered only on Election Day and you can request this service by calling the Returning Officer (403-742-4441) anytime before the close of Election Day.

Election Day

Monday, October 21, 2013

13

Voting Stations will be open 10:00 am - 8:00 pm
Voting Stations located throughout the County.

All wards can vote at the County of Stettler Administration Building
6602 - 44 Avenue, Stettler AB

Voter Identification and Proof of Residency is required.

VOTING STATIONS

Note that every resident of the County of Stettler can vote at the County of Stettler Administration Building

Byemoor-Endiang Ward	Byemoor Community Hall County of Stettler Administration Building
Big Valley Ward	Big Valley Community Hall County of Stettler Administration Building
Botha-Gadsby Ward	Gadsby Community Hall County of Stettler Administration Building
Stettler Ward	County of Stettler Administration Building
Erskine South - Warden Ward	Erskine IOOF Hall County of Stettler Administration Building
Erskine - Buffalo Lake Ward	Erskine IOOF Hall County of Stettler Administration Building
Donalda-Red Willow Ward	Donalda Community Hall County of Stettler Administration Building



JOINING FORCES: TOWN & COUNTY PLANS

The relationship of cooperation between the County of Stettler No. 6 and the Town of Stettler that has been established over the past years continues in the best interest of the greater Stettler community. One important part of this relationship is the regular review of the Intermunicipal Development Plan. The most recent plan was adopted in 2009 and is due for review in 2014. As part of this process the following aspects will be considered:

1. Land use and policies – the 2009 IDP established short term and long term growth areas for each municipality for at least 40 years. It requires that commercial and industrial developments in the County's growth area connect to the Town's sanitary sewer system and pay an off-site levy of \$5,000 per acre. It also provides the opportunity for any development to connect to either the Shirley McClellan Regional Water System or to the Town's water system. These policies, the implementation of the Town's sanitary sewer plan and the possible phasing of new development to assist in this process will be under review in 2014.
2. Servicing studies – an overall plan to coordinate minimum standards and main servicing route alignments is necessary in order for new developments to be serviced by municipal water and sanitary sewer systems. These studies will ensure that new developments in the County growth areas are constructed to standards that facilitate connection to the Town's sanitary sewer system and to municipal/regional water systems.
3. Stormwater management – Alberta Environment and Sustainable Resources reviews and approves the stormwater management plans for each new development. The County and the Town are working with the provincial government to prepare an overall stormwater master plan for the Red Willow Creek basin. The County growth areas in the IDP and the Town itself are part of this basin. An approved Stormwater Master Plan will mean that stormwater plans for each individual new development that comply with the overall master plan will be reviewed and approved much quicker.
4. A new Southeast Stettler Major Area Structure Plan – the current plan dates from the late 1980's and is overdue for a review. This plan will follow the previous studies and provide more detail on land uses, the alignment of local roads, highway intersections and servicing routes. This plan will provide a comprehensive framework for the preparation of local outline plans and area structure plans for individual new developments.
5. These studies are part of an effort by the County and the Town to be "shovel ready" for economic development when the current slow cycle ends. Having these plans and studies in place means that when a developer applies for a new subdivision or development it will be reviewed and approved much quicker, which is one important aspect of encouraging economic development. Please contact the County of Stettler Planning and Development Department at 403.742.4441 should you have any questions or comments regarding the preparation of these studies and plans.



15

RISING CONCERNS: QUAGGA & ZEBRA MUSSELS

Remember last issue?

We talked about what a great concern Quagga and Zebra mussels are and can be! There are three inspection stations in the southern part of Alberta, and since the last article in the Spring 2013 County Connections, there has been 8 boats stopped that contained zebra and/or quagga mussels on them!

They are getting closer all the time; we need to be diligent on how well we are cleaning our boat if we want to keep Alberta's lake pristine. We are doing some monitoring at Buffalo Lake on behalf of the province who are very overwhelmed with all of the lakes in Alberta that should be checked.

We need your help!

It's up to you to help us out! This fall when you start pulling out your docks, we would like you to call us first and arrange for us to be there when you do. This would assist us as we can take samples off of your docks looking for invasive species in our waters.

Remember our slogan.... **CLEAN DRAIN DRY**

That's all it takes to keep us looking great and enjoying our waters pest free. If you have any concerns, questions, or advise please call the Agricultural Services Board at 742-4441.



RURAL RECYCLING

The County of Stettler is expanding its Rural Recycling Initiative to include new Recycling Bins at the Following locations:

Big Valley Transfer Station
Byemoor Transfer Station
Donalda Transfer Station
Gadsby transfer Station.

The County decided to expand the program after bins that were already placed in Stettler, Botha and Erskine proved to be very popular.

These recycling bins are meant to accept most recycling material, cleaned, but unsorted.

Accepted Materials

Aluminum Cans (lids trapped inside)

Plastic Containers (Remove Lids)

Plastic Bags (inside one bag)

Glass Jars (Lids Off)

Paper (Magazines, books, paper egg cartons)

Shredded Paper (in Plastic bag)

Cardboard (flattened*)

Please flatten your cardboard, as it takes up the most amount of space in the bins. We pay a fee every time the bin is emptied, so your tax dollars will go further if we fill the bins completely up, and there will be more room if everyone flattened their boxes and cardboard.



STETTLER ECO CENTRE

Opening in September

The Stettler Waste Management Authority has recently approved and built the Stettler Eco Centre, which is a year-round toxic waste collection facility for responsible disposal.

The building was constructed over the summer at the Stettler Transfer Station and will be operational by September. In addition to the Toxic Waste Collection, there building houses an office and a bathroom for the Stettler Transfer Station Operator

What is Accepted the Stettler Eco Centre?

Old Paint, Household batteries, Fluorescent Bulbs/tubes, Small Electronics, Cell Phones, Laser Toner, InkJet Cartridges.

The Eco Center is also accepting Hazardous Household Waste.

Household hazardous waste are products that have at least one of the following symbols on their containers:



explosive



corrosive



flammable



toxic

Some examples of Household Hazardous Waste:

- | | |
|-------------------------------|-------------------------------|
| All Cleaners | Glue |
| Acetone | Hair Colouring/Hairspray |
| Spray Paint | InkJet Printer Cartridges |
| Aerosol Cans (air fresheners) | Kerosene |
| All-Purpose Cleaners | Laser Toners |
| Ammonia | Laundry Soap/Stain Remover |
| Wasp Spray | Lighter Fluid |
| Auto Body Filler | Lye |
| Ballasts | Mildew Removers |
| Barbeque Starters | Muriatic Acid |
| Batteries | Nail Polish Remover |
| Bleach | Oven Cleaners |
| Butane | Paint Thinners |
| Car batteries | Paint |
| Contact Cement | Rubbing Alcohol |
| Disinfectants | Rug and Upholstery Cleaners |
| Drain Cleaners | Rust Removers |
| Fabric Softeners | Septic Tank Cleaner |
| Fluorescent Bulbs | Turpentine, Varnish, Lacquers |
| Fungicides | Pool and Hot Tub Chemicals |
| Gasoline | Toilet Cleaners |
| Weed Killers | Windshield Washer Fluid |

Since there is now year-round Toxic Waste Disposal, there will no longer be a Toxic Round-up in June and October. Stettler Eco Centre will accept these materials Thursday-Monday from 10:30 am - 6:30 pm.

CHANGES: LAND USE BYLAW 1443-10

The Land Use Bylaw is a comprehensive document that regulates the use and development of all lands that fall within the borders of the County of Stettler. Although the current Land Use Bylaw was adopted in 2011 the intent is to review and revise the bylaw on a regular basis in order to ensure that it continues to meet the needs and intents of County residents. On June 12 the County Council adopted Bylaw 1481-12 which provided for several amendments to the Land Use Bylaw. These changes include:

1. Clarifying wording in a number of Land Use and Building Definitions and Interpretive Definitions.
2. Clarifying the intent with restrictions on the storage and/or use of Recreational Vehicles as dwelling units generally and also specifically in the Agricultural District, the Resort Residential District and the Resort Residential – Communally Serviced District.
3. Providing for Recreational Vehicle to be used as a dwelling unit in the Agricultural District and the Country Residence Agricultural District. The use shall be a permitted use on a parcel of at least 80 acres and a discretionary use on a parcel less than 80 acres. The Recreational Vehicle must be connected to a certified sewage disposal system.
4. Incorporating regulations relative to abandoned oil and gas wells pursuant to Alberta Regulation 43/2002 the Subdivision and Development Regulation under the Municipal Government Act.
5. Providing for a variance to the rear and side yard setback in excess of 25% under special circumstances. This is followed up in the Fee Schedule Bylaw with an increase in the application fee for such a variance.
6. Requiring, when a person applies for a building permit under the Safety Codes Act for a structure for which the Development Authority has issued a development permit, that the person must submit a copy of the building permit to the Development Officer to ensure compliance.
7. Allowing for the development of a Secondary Suite in a detached Ancillary Building in those districts where Secondary Suite is a listed use.
8. Moving the ground floor area restrictions on Ancillary Building out of the use tables and into the regulations so that the Development Authority may consider variances.
9. Clarifying that the issuance of a development permit does not absolve the applicant from the responsibility to comply with any provincial or federal legislation or with another bylaw of the County.
10. Updating regulations relative to excavation, grading, altering overland drainage, surface mineral extraction, construction site preparation and removal of topsoil.



11. Increasing the maximum height of a fence in a front yard from three feet to six feet, subject to corner lot restrictions.
12. Allowing that a manufactured home older than ten years may be placed away from other yard sites provided that it shall be a discretionary use.
13. Rezoning a number of parcels that are owned by the County of Stettler, the Town of Stettler, various Villages, provincial government agencies and the Crown and that are used for public or semi-public purposes from their current districts to the Public Services District, which was established specifically for this purpose.
14. Rezoning PT NE 30-38-19 W4M (8.1 acres) and Lot 2, Block 4, Plan 8621378 (4.9 acres) from the Agricultural District to the Country Residence Agricultural District in order to bring these two lots into the same zoning district as the other adjacent properties along this section of Range Road 19-5.

Anyone who has questions about the Land Use Bylaw or requires clarification in reading and understanding the bylaw is welcome to contact the Planning and Development Department at any time during regular office hours.

Reminder: Development Setbacks

Please remember that you do not need a development permit from the County for any agricultural operation as long as any structures such as hay sheds, granaries, livestock shelters and barns meet the 125 feet setback from the center line of the County road. Shelter belts must be set back 75 feet from the center line of the road. If you wished to vary from these setbacks for any agricultural operation, you would require a development permit. You may need a license/permit from the Natural Resources Conservation Board if your agricultural operation includes a confined feeding operation (please call the NRCB at 1-340-5241). If development is proposed along a provincial highway a Roadside Development Permit issued by Alberta Transportation is required. Please contact Alberta Transportation at 403-854-5550 or visit their website at <http://www.transportation.alberta.ca>.

For more information regarding development please contact Planning & Development at 403-742-4441.



RURAL ROAD STUDY

Over the past year, the County of Stettler has been working to complete an Update to our Rural Road Study. This study is intended to be used as a planning tool for the County to determine annual road upgrade requirements and the associated costs. The report addresses five specific tasks:

1. Update the County's road classification definitions
2. Review all the County's roads, rank all the roads in the County to determine which roads require updates and to prioritize the upgrades for the next ten years
3. Identify the projected road maintenance costs for the next ten years
4. Identify the recommended bridge and bridge culverts maintenance requirements for the next ten years
5. Identify alternative road maintenance methods for gravel and paved roads.

When discussing road standards, it is first necessary to define the various types of roads and their functions. There are two ways to classify a road. The first is to determine the function of the road and the second is to use a design classification which includes road width, surface type, number of lanes and design speed. Using both of these methods, the County has identified four functional road classifications within their borders:

- Arterial roads, which provide primary connectivity between Highways and communities within the County
- Collector roads which provide connectivity between major roads and local roads
- Resource roads which provide access for resource development such as forestry, gravel pit and/or oil and gas
- Local Roads which provide access to residences and fields.

There are 2,643 kilometres of local roads and 129 bridge structures within the County boundary.



Road Classification	Length in Kilometres	Number of Bridges
Arterial	108.5	11
Collector	67.9	4
Resource	450.7	10
Local	2025.9	104
Total	2653	129

Of the 129 bridges that are located on County Roads, about 64 of them are Standard Bridge Construction and 65 of them are bridge culverts.

Council will now review the report and its information and recommendations will be carefully considered by council as they deliberate the upcoming budgets. The Rural Road Study is an integral part of our road network planning and it gives us a great overall picture of our infrastructure and road needs throughout the entire county.



INNOVATIVE ROAD CONSTRUCTION

The County is undertaking projects this season utilizing some products that are new or experimental to the road construction industry here in Alberta. Of the main concerns that we have for County gravel roads is the control of dust, use and cost of gravel and sealing the shoulders for water absorption. To this end, We are undertaking trials of two dust control products that may also provide a semi-hard surface that repels water.

Over time, the gravel and cement stabilized roads have a tendency to absorb surface water through continuous blading and gravelling or heavy loads that deflect and crack the grade allowing water and frost action to slowly degrade the surface – and eventually work its way into the travel paths. In addition, weeds and grass slowly encroach on the shoulders with their roots de-compacting the subgrade hastening the deterioration.

RhinoSnot

Yes a memorable name yet quite descriptive of the expected results. RhinoSnot is comprised of two grades of dust control products. Earth Glue is an acrylic copolymer -- a byproduct of the paint industry and is a totally recycled non-petroleum based product. Envirotac II is a high performance, environmentally-

safe, low cost acrylic copolymer. When applied to soils or sands, it will penetrate and coat the surface . Upon drying, Envirotac forms a water-proof, UV-resistant, solid bond which binds the soil particles. Increasing the concentration of Envirotac II, can create highly durable surface that will be pliable and hard enough to minimize surface damage and withstand heavy traffic.

Envirotac II is a proprietary blend of polymers that use proven long-chain nano-technology to form complex bonds at the microscopic level between aggregates. Envirotac II allows existing soils and sands that would normally have no load bearing capabilities, to be used for roads, parking lots, trails and other heavy traffic areas – at a fraction of the cost of traditional asphalt construction.

Envirotac II is an environmentally safe, non-hazardous material that can be used for “Green Roads”. A road surface made from Envirotac II produces 70% less toxic air pollutants than a traditional asphalt road and reduces the overall greenhouse gas footprint by 80%!

Envirotac II is the preferred soil stabilization and dust control



“

One of the main concerns that we have for County gravel roads is the control of dust, use and cost of gravel and sealing the shoulders for water absorption. To this end, We are undertaking trials of two dust control products that may also provide a semi-hard surface that repels water

- Rick Green

Director of Engineering

”

23

product used by the U.S. military for roads, life support areas, air field and landing zone development

The County has completed a low cost (when compared to asphalt surfacing) hard, water repellant surface structure on the rear parking lot of the administration building. The performance in this application is being closely monitored along with the required changes to maintenance (specifically snow removal). Other project areas that are being tested include 300m portions of the Byemoor road (incorporated into the soil cement and chip seal) and the Warden Road (3" gravel surface incorporation). In the future, we plan to work these products into other locations with varying traffic loadings and surface conditions in an effort to determine if the materials provide satisfactory performance on County roads.

We are being challenged with the cure rate of the RhinoSnot products as the ideal application will result in the application area being closed to traffic while it achieves a full cure (2 to 4 days depending on conditions) plus a follow up top spray that cures in about a day.

SB-90

90 is an asphalt based dust suppressant that is expected to perform much like conventional cold mix. Compared to the traditional cold mix oil application (SC 250, MC 250 or like) the S.B.-90 will not cure to a hard asphalt -like crust. S.B.-90 remains pliable even after curing, so reworking or maintaining a properly treated surface can be done easily with just a motor grader which may allow for quick repairs of areas that deteriorate.

The County will be applying the S.B.-90 to the Scollard Road (1 mile) and Twp. Rd. 39-2 from Hwy. 56 east 1 mile. The tested structure consists of 2" of compacted gravel / S.B.-90 mix.

Tire Shred

Many County roads cross lands that have weak subsurface conditions, whether wet sloughs or silty, sandy native materials. In these locations, the roads often require constant



Tire Shred cont.

repair as the rock and gravel used to bridge over the poor strength underlying materials disappears into the ground over time from traffic and frost action leaving surface boils that contribute to some unpleasant driving conditions. The conventional practice is to continue applying rock to the problem area with the result over time being loss of the rock into the bogs below.

The County is teaming up with the Alberta Recycling Management Authority to utilize shred created from used tires as a light weight fill. The theory is that the nature of the tire shred to intertwine itself and its light weight could be a cost effective way to reduce use and loss of rock in these patch areas.

The tire shred itself has many other uses in landfill leachate collection, bank stabilization and subgrade insulation, while

providing a good re-use for worn tires.

Range Road 18-4, 6 miles north of Hwy. 589 will have 3 test areas completed in conjunction with the full rebuild of the mile of roadway. The test sections will be monitored to see if they have better performance than the conventional clay embankment along the same road segment.

Asphalt Zipper

In conjunction with the RhinoShot application on the Byemoor road, the County did a trial of a machine called the Asphalt Zipper. The Asphalt Zipper is a planning machine that mounts to a front end loader and basically tills up anything in its way. The Zipper is a cost effective alternative to a fully self-propelled reclaiming machine and will be discussed as a possible addition to the road maintenance fleet if the trials and performance prove desirable.



ABANDONED OIL & GAS WELLS

In November 2012 Alberta Municipal Affairs introduced amendments to the Subdivision and Development Regulation that require developers and property owners applying for a subdivision or development permit to identify the location of abandoned oil and gas wells during planning and to properly address them in the proposed development.

The reason for this is that, prior to being abandoned oil and gas wells may be identified visually on the surface as well as through a notation on the land title. After surface reclamation has been completed and a reclamation certificate issued by Alberta Environment and Sustainable Resource Development, the well site lease notation is typically removed from land title records. At this point, there is nothing visible on the surface of the land or documented on the land title to indicate the presence of an abandoned well. Since the abandoned well is not visible on the surface, it may present a risk to the safety of the equipment operator and may damage excavation and construction equipment if not properly located prior to any development activity. Additionally, from time to time, it may be necessary to perform repairs on an abandoned well. As such, surface structures are not permitted on top of an abandoned well and a minimum 5 metre (16.40 feet) setback radius from the well must be maintained.

Prior to completing an application for subdivision and/or development, applicants should search for abandoned wells in the proposed development area. This information can be obtained from the Alberta Energy Regulator's Abandoned Well Viewer on the AER website www.aer.ca. The viewer will provide a map identifying all recorded abandoned well surface locations in the selected area and list any additional details that are available. If applicants find abandoned wells within the

project development area, they will be required to contact the licensee and submit supporting information to the County. This information will consist of:

- a map of the search area from the viewer and a statement that there are no wells in the project area, or
- a list and map identifying the locations of abandoned wells within the search area, including the surface coordinates, as provided by the viewer or Information Services, and;
- written confirmation from the applicant for subdivision or development approval that the licensee responsible for each well has been contacted and the exact well location confirmed (any additional information discussed with the licensee that may have led to a change in the setback area should also be included),
- a sketch of the proposed development incorporating the necessary setback area for each well, and
- if the development will result in construction activity within the setback area, a statement confirming that the abandoned wells will be temporarily marked with on-site identification to prevent contact during construction.

Although it is the responsibility of the applicant to provide this information when submitting an application for subdivision and/or development permit, the County will endeavour to assist as much as possible.

If you have any questions and/or concerns about this or any other requirement relating to a subdivision or development permit application, please contact the Planning and Development Department at any time during regular office hours at 403.742.4441.



RECENT CHANGES: MUNICIPAL DEVELOPMENT PLAN

Number of Subdivisions

The County of Stettler's Council adopted several revisions to the Municipal Development Plan (MDP) on June 12, 2013. An important revision to the Plan is an increase from two to three "private titles" that are permitted per quarter section (a "private title" is any property that is used for agricultural and/or residential purposes). What this means is that every quarter section is allowed to have two acreages subdivided in the Agricultural District. For example, if a ten acre parcel (acreage) was subdivided from the quarter section in the past, it is now possible to subdivide another parcel as the third "private title" for the quarter section.

Multi-lot Subdivision

Once the maximum of three "private titles" exist on a quarter section a landowner who wants to subdivide additional parcels is required to subdivide a minimum of five new parcels and comply with the County's Planning and Subdivision Guidelines for multi-lot subdivision. There are minor exceptions to this rule, for example if a 15 acre parcel existed prior to August 12, 2009 that parcel could be further subdivided into smaller parcels and if there was a slough on the parcel so that it cannot accommodate five lots of a maximum of 3 acres each, then fewer than 5 new parcels could be created.

Size of Bare Parcel

The preferred maximum size of a bare parcel within the

Agricultural District is 5 acres. A \$50 contribution to the rural development fund is required for a subdivision application for a 5 acre bare parcel. If the proposed bare parcel size exceeds 5 acres a contribution to the rural development fund of \$1,000 per acre exceeding five acres is required as per the County's Fee Schedule.

Size of Farmstead Separation

The provincial government determines the setback distances to property lines that the County must follow when it comes to the subdivision of farmsteads with existing private sewage disposal systems. For farmstead subdivisions it is assumed, based on past subdivisions, that most farmsteads in the County could be accommodated within six to nine acres [excluding the setback distances that are required under the Alberta Private Sewage Systems Standard of Practice issued by the Safety Codes Council under the Private Sewage Disposal Systems Regulation (Alberta Regulation 229/1997)]. If the private sewage system setback distances were included, typically a farmstead subdivision would have to be around eleven to thirteen acres, depending on the parcel configuration, dimensions and location of the private sewage system. This means that typically a farmstead subdivision that included the private sewage system setback distances would have to add between two and seven acres of land. Many see this as a waste of valuable farmland. If these acres were added over time, it will not take many years to "lose" a thousand acres of farmland in the County.



photo credit: Les Stulberg

To address this concern the revised Municipal Development Plan deems that the maximum area that the Subdivision Authority will recognize as a farmstead parcel is ten acres, but not automatically ten acres. A farmstead yard is deemed to include relevant permanent bona-fide and viable buildings, shelter belt, access, power pole, gas connection, domestic water well and private sewage disposal system [excluding the setback distances to property boundaries that are required under the Alberta Private Sewage Systems Standards of Practice issued by the Safety Code Council under the Private Sewage Disposal Systems Regulation (Alberta Regulation 229/1997)]. When reviewing an application for a farmstead separation parcel the County staff and the applicant will consider the total area that is required to encompass the existing yard site as defined above, using an aerial sketch of the property, the site plan submitted with the application and a site inspection. The minimum setback distances to accommodate a private sewage disposal system are not accommodated in the determination of the “agreed upon” size of the yard site. A \$50 contribution to the rural development fund is required for a farmstead separation parcel incorporating the “agreed upon” farmstead area as defined above. If an applicant proposes to subdivide a parcel that is larger than the “agreed upon” farmstead area, a contribution to the rural development fund must be submitted with the subdivision application of \$1,000 per acre for each acre exceeding the “agreed upon” farmstead area. For example, if County staff and the landowner/applicant agree that the farmstead area is contained within 7 acres but the applicant proposes to subdivide a 10 acre parcel, then a \$3,000 (\$1,000 x 3 acres) contribution to the Rural Development Fund is required. If County staff and the applicant/landowner cannot agree on the actual size of the farmstead, the applicant must

pay required contribution to the rural development fund and staff will proceed with the application with a recommendation as to the size of the farmstead, while the applicant may attend the Municipal Planning Commission meeting to state their case for the farmstead area.

In this way the Municipal Development Plan protects agricultural land in the County. It is also a more reasonable way to deal with this concern than what was previously allowed for. The contribution to the rural development fund is relatively minor and should be a preferred alternative to the average cost of changing an existing open discharge/pumpout sewage system to a field system that would cost between \$15,000 and \$25,000.

The rural development fund was established in 2009 “to promote, develop and assist any rural or agricultural project that the Council deems to be in the interest of the rural community at land.” The County’s Fee Schedule provides the calculation guidelines for the required contribution to the rural development fund based on the proposed application. The contribution amount is fully refundable if the farmstead area is revised by the Municipal Planning Commission or if the subdivision application is denied by the Subdivision Authority and a subsequent appeal to the Subdivision and Development Board is also denied.

Please contact the County’s Planning & Development Department should you have any questions or concerns regarding the amendments to the Municipal Development Plan.

28



ABSINTHE WORMWOOD ENFORCED

That's right! It is our third year since the elevation of Absinthe Wormwood in this fine County! Its time to pull up all of our socks, Agricultural; Service Board included! Since the bylaw was introduced, we took a three year approach on this weed.... Educate(2012).....Encourage(2013)...Enforce(2014).

2014 is the year we help each other out and take a community approach. When you see your neighbour out spraying his/her absinthe..... Take note and follow suit SPRAY YOURS!! For those of you who have either recently moved here, or have been living under a rock for the past three years.... This is what you are looking for.

This is a very hardy plant, very pungent smell, and very invasive. As we have said in the past, this plant is very invasive in pastures. With overgrazing and dry years in the past, this

plant has had very good conditions to establish its roots. With 50,000 seeds per plant, it does not take long to get a good seed bed for years of frustration.

What Works?

Hand Pulling, cultivation (before flowering), Reclaim, Retore II, Tordon 22K, Grazon, Curtail M, Ally, Escort, are all registered on Absinthe Wormwood. Check with local retailers on price and always follow label rates.

Any further questions can be directed to the Agricultural Services Board 742-4441.

COMMUNITY BULLETIN



Agricultural Rental Equipment

The County ASB has an equipment fleet for borrow/rent. If you need one of the following items, please call the County office to check availability and rental rates.

Rental Equipment:

- Noise Cannons
- Age Verification Program - data entry
- Tag Reader Program
- Cattle Scale
- Godwin Pump, Hose and Trailer
- Skid Mount Sprayer
- Tree Planter
- Weed Inspector
- Private Land Spraying
- Weed Picking Labour

Free (Damage Deposit Required):

- Skunk Trap
- Magpie Trap
- Forage Probe
- Backpack Sprayers
- Mulch Applicator

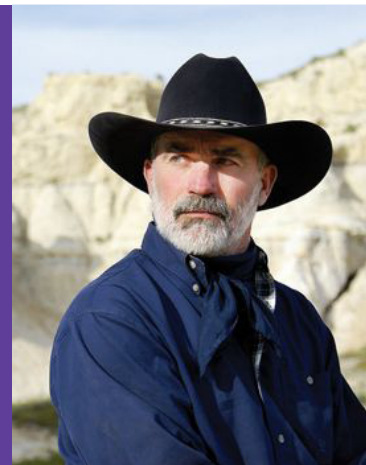
Please call the Ag. Services Department at 403-742-4441 if you have any questions!

A Night in the Wild Wild West for JDRF

September 14, 2013 - 5:30 pm
Rochon Sands Hall

WANTED! People Looking for a Rootin' Tootin' Shootin' Good Time! Take a step back in time, grab yer posse and mosey on down for a night of laughter and old-fashioned fun in support of Juvenile Diabetes Research. Join us for a few sarsaparilla, enjoy some chow, listen to some cowboy tales, and enjoy some great entertainment! Just watch out for the sheriff! Special Guest Speaker: Terry Grant "The REAL Mantracker" Cocktails at 5:30pm, Supper at 6:30pm, Terry Grant at 8:00pm Tickets \$50.00 per person available at Wells Furniture Hosted by the JDRF Gang (aka The Kilimanjaro Crew) All proceeds to benefit the Juvenile Diabetes Research Foundation!

Contact: Wells Furniture - 403-742-3223



Stettler IODE/Kinette Rummage Sale

September 20 & 21, 2013

Help support a local cause that helps support so many others and find yourselves a few treasures in the mix! Donation Pick Up: In Town September 18th Summer Drop Off is also available from 6:00 - 8:00pm Summer Drop Off Dates are: July 22nd August 5th August 19th September 9th For more information or to volunteer, please call 403-742-6850, 403-740-9121, or 403-742-4682.

COMMUNITY BULLETIN

Community Event

Date

Community Event

Date



Big Valley Fall Supper

October 20, 2013 4:00pm - 7:30 pm

Big Valley Jubilee Hall

Sponsored by the Big Valley United Church

Community Event

Date

County of Stettler Housing Authority

Affordable Housing for Seniors

Heart haven Lodge, paragon Place and Willow Creek Lodge are all ready to welcome Seniors Home. They offer single rooms, Couple's rooms and One Bedroom Suites at very affordable rates.

There are homemade meals, housekeeping, social activities, security, emergency response, laundry, hosting rooms and beautiful grounds!

You can apply to become a resident today by contacting the Resident Services Manager at 403-742-695



Public Mail Agreement #41398593
Return Undeliverable Canadian Addresses to:
County of Stettler No. 6
Box 1270
Stettler, AB T0C 2L0