

# Stettler County Connection



## CAST YOUR VOTE

Should We Build a New Shop?

Borrowing Bylaw 1564-16

Inside Cover

pg 6

Back Cover



**Voting Day**

Monday

**June 27, 2016**

10 AM - 8 PM

## BE INFORMED

**Public Information Sessions  
County Shop  
6602- 44 Ave. Stettler**

**Tuesday, June 21 from 6-8 PM  
OR**

**Wednesday, June 22 from 2-4 PM**

**Q&A session, plans for the new shop and  
tours of the existing shop.**

**Everyone welcome.  
For more information call 403-742-4441**



# STETTLER COUNTY VOTES MONDAY, JUNE 27, 2016

A Vote of the Electors will be held on the following:

**Are you in favour of Council passing Bylaw 1564-16 authorizing the borrowing of \$5,261,000.00 for the construction of a new County Public Works Shop Facility (Check one):**

**Yes  
No**

**Advance Poll - Thursday, June 23, 2016 - 12:00 p.m. - 6:00 p.m.  
Stettler Agriplex - 4516 52 St, Stettler, AB T0C 2L0**

**VOTE! Monday, June 27, 2016 from 10:00 a.m. - 8:00 p.m.**

Voting Stations:

Ward 1 – Byemoor-Endiang – Byemoor Community Hall

Ward 2 – Big Valley – Big Valley Community Hall

Ward 3 – Botha-Gadsby – Botha Community Hall

Ward 4 – Stettler – Stettler Agriplex

Ward 5 – Erskine South – Warden – Erskine IOOF Hall

Ward 6 – Erskine – Buffalo Lake – Erskine IOOF Hall

Ward 7 – Donalda-Red Willow – Donalda Community Hall

**Regardless of where you live, you may vote at ANY of the above voting stations.**

**A person is eligible to vote in an election if the person is:**

- a. at least 18 years old,
- b. is a Canadian citizen, and
- c. has resided in Alberta for the 6 consecutive months immediately preceding voting day
- d. is a resident of the County of Stettler on election day
- e. Every voter shall make a statement, in the prescribed form, that the person is eligible to vote as an elector and produce for inspection one piece of authorized identification verifying the person's identity and current residence.

**Don't**

**Forget**

**To Vote**

**03 REEVE'S RAMBLINGS**  
County Shop.

**04 39TH ANNUAL AWARDS**  
Community Service Awards.

**06 PROPOSED NEW SHOP**  
Why we're heading to the polls.

**10 CRISIS AID PROGRAM**  
Relies on donations.

**11 PHEASANT FESTIVAL**  
October 11-16, 2016.

**12 4H COLOUR RUN**  
County sponsors first annual event.

**13 CODE OF CONDUCT**  
New bylaw in place.

**14 PLANNING PROJECTS**  
2016 projects underway.

**16 AMBULANCE**  
Violence prevention & response.

**18 TAKE IT OR LEAVE IT**  
Recycling Centre honors 'RE-USE'.

**20 RECREATION FUNDING**  
Projects supported for rural recreation.

**26 EMERGENCY MANAGEMENT**  
We're preparing. Are you?

**28 TAX NOTICES**  
Check your mail - notices coming June 30th.

**30 INFORMATION SESSIONS**  
Be an informed voter. Take in a session.

S  
T  
I  
N  
E  
N  
E  
M  
O  
N  
O

# COUNTY CONNECTION

## INTRO

*Dig the well before you are thirsty.*

Chinese Proverb

Recently, we have made a name for ourselves on the front pages of the local newspaper, as County Council makes plans to replace or repair a 47-year old public works shop. We've heard a lot of rumors, but I'm more than a little surprised at how few people have personally asked me questions about this issue.

I'd like to point out our shop hasn't been poorly maintained or left to crumble. We, and Councils and staff before us have taken careful aim and proper measures which is why it is still functioning to the extent it is, and it is able to service as much as it does after 47 years. However over the course of 47 years, safety codes have changed. Equipment is built larger today than it was in 1969 and insulation is no longer comprised of straw. Health and safety is now a consideration when factoring employee workplace environments.

County staff are proud. They are hard working. They take pride in their accomplishments. Recently I've personally driven the gravel roads of a few other municipalities, and I come home also thankful for the conditions and safety of our rural road network. The shop we're debating looks after repairs and maintenance to our fleet of equipment, plus maintains ambulances, fire trucks, utilities vehicles, garbage trucks, Agricultural Services vehicles and supports water distribution which provide safe clean drinking water to hundreds of people in over seven communities plus many farms and acreages.

Public participation and public engagement is your job - and it's our job to be fiscally responsible and accountable to the public, which means answering your questions - all of them. So ask questions, talk to your Council, learn the facts, be informed, be involved.

Dig the well before you are thirsty.  
And please, VOTE.

Sincerely,



## Stettler County Connection

Summer 2016

Volume 6 Issue 1

Editor-in-Chief

Tim Fox

Managing Editor

Niki Thorsteinsson

Printed by

Kathy's Printing Service

All Rights reserved. Any reproduction of the contents without written authorization from the publisher is strictly prohibited. The publisher cannot be held responsible for any errors or omissions found within this newsmagazine, or for loss of, or damage to, unsolicited material submitted by readers.

Availability: Current Issues of County Connection can be obtained from the County of Stettler Administration Building while supplies last.

Subscription: County Connections is delivered free of charge to taxpayers, with exception to those who do not live in the Province of Alberta or have unsubscribed from our mailing list. If you wish to receive future copies, please make the request to the Managing Editor at [nthorsteinsson@stettlercounty.ca](mailto:nthorsteinsson@stettlercounty.ca). You may also view the current and back issues of the County Connection on our website at [www.stettlercounty.ca](http://www.stettlercounty.ca).





Reeve Nixon enjoying the company of school children visiting Council to learn about Municipal Government. We host several classes of visitors each year.

## REEVE'S RAMBLINGS

The decision by Council to build a new County Shop has certainly created a lot of interest and discussion from ratepayers and that's good. The problem is that the coffee shop debates resulted in a lot of misinformation and a petition was circulated and signed by some people who weren't aware of the facts and figures that were presented to Council in their decision making process.

The first decision made by Council after the initial investigation into the state of the old County shop was that we did not want to put the amount of money needed into the old shop just to bring it up to safety codes. With that in mind we purchased suitable land just 2 km from Stettler and put \$600,000 into reserves in 2014 and 2015. Due to ratepayer concerns about the direction Council was going, we had an intrusive investigation done to assess the existing shop.

Following the presentation of those findings by WSP Engineering, we were even more committed to building a new shop and to spend only what might be needed for employee safety on the old building. This study was presented to Council on April 8 and is now a public document.

Some of the points we considered in making our decision were:

- The age and condition of the old shop.
- The safety of our employees.
- The physical location of the old shop,
  - Residential area
  - Recreational fields across the street
  - Restricted road to shop (4500 kg)
- Possible resale of present County property 17 acres assessed at \$ 3.5 million
- Opportune time to build because of competitive bids from industry.

- Very good interest rates which can be tied up for 30 years (just over 3% )
- An opportunity for local contractors in a slower economy.

As municipal Councillors, my colleagues and I are expected to do our 'due diligence' in making decisions as any government representatives should do and indeed any business should do. When we were elected all Councillors took an oath to represent the Ratepayers of the County of Stettler to the best of our abilities and for my part, I take that oath very seriously. I feel that ratepayers elected me to weigh the facts presented to me and make my decisions based on those facts. Anything else in my opinion, would be shirking my duties. I certainly respect the opinions of ratepayers and I thank those who have called me concerning this issue but to call for a vote of the people without knowing all of the facts is not doing due diligence.

Please ask questions if you do not know the answer. Please do not let rumors influence your discussion of this important decision. Please feel welcome to attend our Council meetings and witness the debate that takes place with any important decision.

We Councillors are responsible not only for the day-to-day decisions that relate to County policy, but we also must recognize the long term needs and goals of our County. The County of Stettler continues to grow in net worth due to our investments in water lines, gravel reserves, roads and bridges. We have always considered our County a 'Progressive County' and wish it to remain so. As with any progressive business we must always move forward.

# 4



**Stettler Dodge Community Service Award**  
Rob and Rhonda Maginn (centre)



## COUNTY'S 39TH ANNUAL COMMUNITY SERVICE AWARDS

Every year the County of Stettler celebrates and recognizes its valuable volunteers for their selfless contributions towards enhancing the spirit of our communities. The dedication of every volunteer contributes towards the formation of strong, vibrant and viable communities.

The 39<sup>th</sup> Annual County of Stettler Community Service Awards were held on February 19, 2016 in Donalda. There were approximately 135 people in attendance who enjoyed a great meal plus entertainment by Morgan Baker and Hilary Clarke, followed by the presentation of the awards. We would like to thank our sponsors for their ongoing support of this event:

- **ATCO ELECTRIC**
- **STETTLER DODGE**
- **ATB FINANCIAL-STETTLER**
- **TD CANADA TRUST**
- **VISION CREDIT UNION**
- **ROYAL BANK-STETTLER**
- **COUNTY OF STETTLER  
AGRICULTURAL SERVICES BOARD**

Thank you to everyone who volunteers in our communities and congratulations to our 2016 Award winners.

**ATCO Electric Arts, Culture and Heritage Award**  
Ken Walker and Darlene Tantrum

**Stettler Dodge Community Service Award**  
Rob and Rhonda Maginn

**Sullivan Lake West Community Service Award**  
Rhonda Hutton

**Donalda & District Ag Society Community Service Award**  
Bruce Gartside

**Botha Community Centre Youth Award**  
Tyson Wedlund

**Botha Community Centre Lifetime Achievement Award**  
Hazel Davidson (posthumously)

**Red Willow Ag Society Community Service Award**  
Leon and Tracy St. Denis

**Stettler & District Ag Society Community Service Award**  
Ralph & Laurel Pole

**Big Valley Ag Society Community Service Award-**  
Wade Hunter

As the various communities within the County of Stettler take turns hosting the awards evening, the 2017 County of Stettler Community service Awards will be held in Big Valley.



**ATCO Electric Arts, Culture and Heritage Award**  
Ken Walker and Darlene Tantrum (centre)



**Big Valley Ag Society Community Service Award-**  
Wade Hunter



**Donalda & District Ag Society  
Community Service Award** Bruce Gartside



**Red Willow Ag Society Community Service Award**  
Leon and Tracy St. Denis (centre)



**Botha Community Centre Youth Award**  
Tyson Wedlund (left)



**Botha Community Centre Lifetime Achievement Award**  
Hazel Davidson (posthumously), accepted by  
Murray Davidson (left)



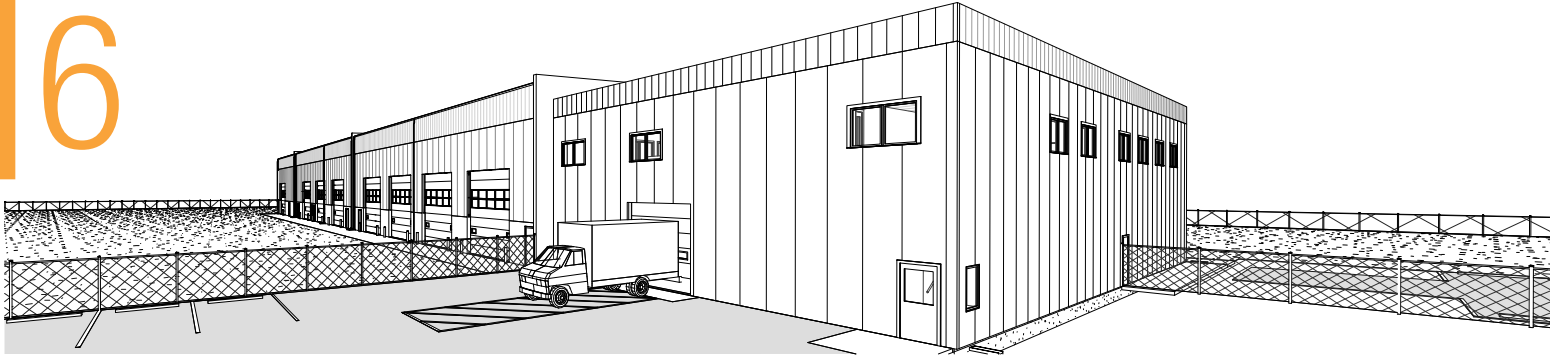
**Stettler & District Ag Society Community Service Award**  
Ralph and Laurel Pole (left)

"We are very grateful for the community service award we received from the Ag Society. It has always been an honor to serve alongside the wonderful people and our friends at the Stettler Ag Society." Ralph & Laurel Pole



**Sullivan Lake West Community Service Award**  
Rhonda Hutton (centre)

# 6



East View of the Proposed New County Shop

## PROPOSED NEW SHOP

On Wednesday, June 8, Council voted in favor of holding a Vote of the Electors regarding Borrowing Bylaw 1564-16, which authorized the borrowing of \$5,261,000 to build a new County Shop. The Vote of the Electors will take place on Monday June 27 from 10:00 a.m. - 8:00 p.m. with advance polls happening Thursday, June 23. This decision came after a petition (Petition #2) was submitted to the County on May 17, 2016. If you 'reside' in the County of Stettler, you need to vote and have a say on this important decision which is now out of Council's hands and in your hands.

Petition #2 stated "the electors of the County of Stettler #6, Request [sic] a vote of the electors regarding bylaw 1564-16 (borrowing bylaw), for a new county public works shop facility". CAO Tim Fox for the County of Stettler No. 6 determined Petition #2 is sufficient, as it meets all of the technical and substantial requirements prescribed under the guidelines of the Municipal Government Act.

Any petition needs to bear the signatures of enough electors to equal 10% of the population; the County of Stettler having a population of 5,103 according to the 2013 census. Therefore 510 valid signatures were required to declare sufficiency.

A total of 758 signatures were collected on Petition #2 with 527 signatures meeting the requirements to be considered valid. According

to the MGA, Council had to choose to either defeat the proposed Bylaw; or to proceed with the proposed bylaw and submit it to a vote of the electors within 90 days, before September 4, 2016. Council chose to take Borrowing Bylaw 1564-16 to a vote of the electors and set the date for the vote to be Monday, June 27, 2016.

Two petitions were actually filed on May 17, 2016 (Petition #2 and Petition #3). Petition #3 received by the County stated "Petition to defeat the resolution as discribed [sic] pertaining to bylaw 1564-16 for the construction of new county work shop for the County of Stettler #6 until no earlier than the municipal election of 2017."

In order to be declared sufficient, Petition #3 needed to meet all technical and substantial requirements in the MGA and set out with reasonable clarity the action sought by Council. The purpose statement of the Petition #3 is unclear; the wording was vague, open to multiple interpretations, and posed multiple questions; and it was not possible to turn the purpose statement of Petition #3 into a bylaw that can be implemented by Council. For these reasons, Tim Fox, CAO for the County of Stettler determined Petition #3 to be substantially insufficient per the requirements of the Municipal Government Act.

An earlier petition, Petition #1, was filed in March of 2016, opposed to Borrowing Bylaw 1558-16. Borrowing Bylaw 1558-16 authorized the County to borrow \$7,600,000 to be used to cover costs



Current Public Works Shop - built in 1969.

of constructing a new County Public Works Shop Facility. Petition #1 was declared sufficient by the CAO Tim Fox for the County of Stettler. Council chose to not proceed with Borrowing Bylaw 1558-16 rather than holding a vote of the electorate.

Borrowing Bylaw 1564-16 was later introduced to significantly reduce the borrowing total from \$7.6 million to \$5.2 million, which Council was able to do by using \$2 million dollars in MSI grant funding.

If after a vote of the electorate, the vote is in favor of proceeding with Borrowing Bylaw 1564-16, Council must proceed with borrowing to be used to cover the costs of constructing a new County Public Works Shop. If the majority were to vote against Borrowing Bylaw 1564-16, the Bylaw must be rescinded.

The message received from members of the public who came forward to explain why they signed the original petition was:

- 1) Do not borrow so much money in this economy (\$7.6 million);
- 2) Do not increase taxes to build a new shop;
- 3) Expressed a wish Council had saved more; and
- 4) Couldn't we just fix the existing shop?

### **Why are we proposing a New County Shop?**

The existing shop, built in 1969 does not

accommodate the size of the equipment we now service, it does not observe the safety codes which now exist, and it is in the middle of Stettler which is not a safe or ideal location to base an operation of this size. The original shop was built to last 25-30 years. We have stretched it to last 47 years. We have to consider the health and safety of staff as well as the needs of the County today, tomorrow, and 30 years from now.

The County has approximately \$11 million in reserves. Local trades are looking for work, and right now Council has the unique ability to move forward with a project which would stimulate our local economy, while at the same time taking advantage of a very competitive construction market.

### **Could we just fix the old shop?**

Council directed administration to hire WSP Canada to conduct an "Intrusive Investigation" into the repairs required to bring the existing shop to code. WSP Canada estimated over \$2.2 million in repairs would be required to bring the shop to current code. Plus, expansion is needed to accommodate the size of existing equipment and workspace requirements. The problem with investing \$2.2 million into the existing shop is that it will now be an asset for the County. We are currently operating within Town limits, at the pleasure of the Town of Stettler. We are breaking weight restrictions on town roads when we move our equipment in and out of the Public Works shop and site. We have neighbors to the west



The shop currently has one wash bay that does not allow for the size of current equipment.

## NEW SHOP FACILITY CONTINUED...

(Points West Living - Supportive Living Community), who have to live with our heavy equipment coming and going, the noise and the operational hours attached to our business. The sports park to the south of our yard is a constant stress to operators who worry about visibility of children so close to our operations.

### How big will you build??

Our current square footage is 28,500 sq. ft. The new designs is for 43,200 sq. ft. and allows for a bay for water storage tanks and related systems to supply water to the complex. Combining Public Works, Agricultural Services, Utilities and our mechanical shop under one roof will provide operational efficiencies and energy efficiencies. Currently these departments are house in four separate buildings.

### What happens next?

A vote of electors will decide if Borrowing Bylaw 1564-16 is passed to build a new shop for the County, or if the Bylaw must be rescinded.

### How much will it cost?

Post-tender estimates for building a new shop facility to house Public Works, Agricultural Services, Utilities and a mechanical shop are:

Above estimate includes:	\$1,565,755 Site Work to develop 5 acre shop site
	\$7,695,245 New Public Works Facility
	\$9,261,000 Total Project Estimate

The new County site is +/- 77 acres. County operations are intended to eventually occupy up to half of that land area leaving the remaining +/- 38.5 acres available for cost recovery sale or other development.

### How do we fund this project?

In response to what we heard from public members who came forward:

- 1) The County is proposing not borrowing as much (\$5.2 million), and will instead fund the project through a combination of reserves, MSI grant funding and borrowing.
- 2) Ratepayers will not see an increase to their taxes to pay for this project.
- 3) Council has saved more. In 2004 County reserves (savings) were at \$4.5 million. Today, we have more than doubled our reserves and they sit at \$11.2 million. Council could choose to use these reserves to build but depleting reserves leaves the County cash poor. Borrowing is affordable. Council proposed to use approximately 20% of County reserves (like making a down payment), and will keep the remaining reserves for servicing other needs, capital purchase and emergencies like bridge repairs that may present in the County.

## Let your voice be heard.

*Vote on Monday, June 27, 2016*

*OR*

*at the advance poll  
Thursday, June 23, 2016*

*The decision to borrow  
money to build a new shop  
is now in your hands.*

## Be informed.

*Public Information Sessions  
will be held at the County  
Shop at 6602-44 Avenue.*

*Tuesday June 21  
from 6-8 PM*

*OR*

*Wednesday, June 22  
from 2-4 PM*

*Q&A session and shop  
tours.*

9

- 4) We could fix the existing shop, but after reviewing all of the information and the Intrusive Investigation findings, Council decided the best use of County dollars was to invest them into an asset that will meet the needs of this County's current operations for today and for the future.

Council chose to use \$2 million from reserves for the Public Works Facility project, leaving the County's reserve balance at \$9,200,000. Council proposes to use \$1 million from the 2016 Municipal Sustainable Initiative (MSI) grant funding, and \$1 Million from the 2017 MSI grant funding. The Municipal Sustainability Initiative (MSI) is funding from the province, which helps support local infrastructure priorities and build strong, safe and resilient communities. Communities across Alberta have been able to build municipal structures and rehabilitate their roadways, water and wastewater systems, public transit facilities, and recreation and sport facilities, and other key local priorities thanks to MSI funding. In the most recent Provincial Budget released by the Provincial Government on April 14, 2016 the County of Stettler was allocated \$2,532,000 in MSI funding for 2016, 2017 and 2018. Council is choosing to allocate approximately 39% of our annual MSI funding for the Public Works Facility project in 2016 and 2017.

### Project Estimate:

Estimate includes:        \$1,565,755 for site work and preparation to develop 5 acres  
                                     \$7,695,245 New Public Works Facility

Funding Explained:        \$9,261,000 Total Project

Reserves:                    - \$2,000,000  
                                     = \$7,261,000

2016 MSI grant:            - \$1,000,000

2017 MSI grant             - \$1,000,000

= \$5,261,000 Borrowed from Alberta Capital Finance at \*3.084% over 30 years.

Yearly repayment for this loan is calculated to be \*\$270,082.00. This yearly repayment would be made out of our operating budget.

As always, we encourage the public to take an interest in their municipal government and value your feedback. Please do not hesitate to call the County for clarification, more information, or to get in touch with your area Councillor. A full history of the proposed new shop can be found on our website at [www.stettlercounty.ca](http://www.stettlercounty.ca).

\* Interest rate as of April 15, 2016 from Alberta Capital Finance Authority. Subject to change.



Councillor Les Stulberg and executive director for FCSS Shelly Walker accept a \$1,000 donation from WSP Canada representative Darrin Newell. Councillor Stulberg won a draw at the AAMDC Conference allowing him to direct \$1,000 from WSP Canada to a charity of his choice. More recently, Council for the County of Stettler donated \$5,000 to Stettler Crisis Aid, earmarked to assist Fort McMurray fire evacuees in our community.

## CRISIS AID PROGRAM

Consider Stettler Crisis Aid program when you are considering financial aid to a local charity.

Stettler's Crisis Aid Program is a one-time assistance program for people who have exhausted all other sources for emergency assistance.

Crisis Aid in Stettler is supported 100% by donations, and funds from Crisis Aid are only accessed when all other options have been exhausted and there is nowhere else for people to turn. Support is provided one-time only, when a crisis situation has been identified and there are no other programs available. In the past funds have been provided for a medication which can not be afforded, transportation to or from medical appointments, special dietary needs not available at the Food Bank, or help with rent to avoid eviction in certain situations and to help people

get back on their feet. Crisis Aid also receives donations of household furniture from community members which are then distributed to individuals in need.

Stettler Crisis Aid has been in operation for five years and operates on donations only. The program can not be funded by Family and Community Support Services (FCSS) in Stettler because it is not within the mandate of the government program FCSS (services must be of a preventative nature). In 2015, locally over \$15,000 in aid was accessed through our local Crisis Aid program.

Shelly Walker, Director for FCSS in Stettler and the FCSS board members accept donations for Crisis Aid through the FCSS office on Main Street in Stettler.



11

# CANADIAN BADLANDS PHEASANT FESTIVAL STETTLE - OCT. 11-16

The 2016 Canadian Badlands Pheasant Festival needs your help.

- Help on the organizing committee (monthly meetings)
- Use of land with pheasant habitat for hunting
- Help during the week of the festival (October 11-16, 2016)
  - Releasing birds
  - Marshaling - ensuring hunters are on proper land and following rules
  - Catching birds
  - Making packages
  - Registering participants
  - Setting up barn and banquet

For more information and to volunteer, please contact the Stettler Regional Board of Trade at 403-742-3181.

12

**4-H**  
Alberta



# COLOUR ME GREEN 4H COLOUR RUN

The County of Stettler is a proud sponsor of the first annual Colour Me Green colour run event hosted by East Central Region 4H Alberta Ambassadors. Participants must be between the ages of 7-99 and those under the age of 18 must have a legal guardian present to sign the waiver.

The event takes place on Sunday, August 28, 2016 from 10:00 a.m. - 12:30 p.m. in West Stettler Park

Everyone welcome.

Early bird registration is available with start times of 11:00 a.m. (Registration opens at 10:00 a.m.) and 11:20 a.m. (Registration opens at 10:20 a.m.)

Participants are encouraged to walk, run, dance or wheelchair their way twice around the 2.5 km circuit. This event is not timed or recorded because there isn't a unit to measure how much FUN you will have.

Contact [colourmegreen4hab@gmail.com](mailto:colourmegreen4hab@gmail.com) or on Twitter @ColourMeGreen4H, or on Facebook at Stettler Colour Me Green 2016. Prepare to be coloured.



# COUNCIL CODE OF CONDUCT

## Good Governance for All

Improving the quality of public administration and governance can be achieved by encouraging high standards of conduct on the part of all government officials. In particular, the public is entitled to expect the highest standards of conduct from the members that it elects to local government.

In January, Council began exploring the need for a Code of Conduct, as best practices from across the country were pointing towards a more accountable and transparent government. Council reviewed many policies already in place by municipalities across Canada, had a workshop with themselves to outline the content of the Code of Conduct, and finally in April, passed Bylaw 1557-16 – Code of Conduct Bylaw.

These bylaws are now a requirement under the MGA once the amendments are approved in

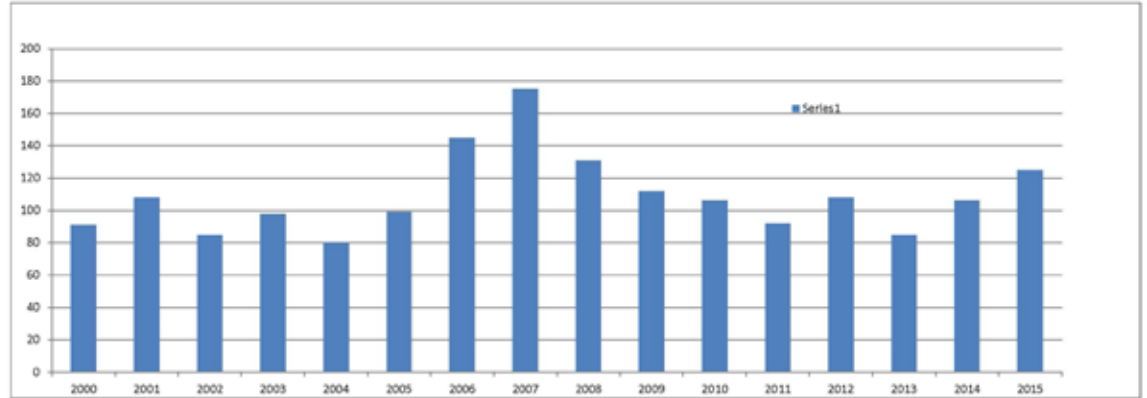
the fall. The County of Stettler has always prided itself on doing the right thing, and this is no exception. Before it became a mandatory item under the MGA, the County of Stettler saw a need to provide electors and ratepayers with a document that outlined their commitment to good government and being good representatives.

The Code of Conduct formalizes the mutual respect and integrity already practiced by our Council, and these standards are to ensure the highest public confidence in and respect for local government and its role in providing leadership within the community.

Should you want to read our Code of Conduct, it is available on our website at [www.stettlercounty.ca](http://www.stettlercounty.ca) or in Council Chambers should you be in/near the office.

## Development Permits

Year	2000	2001	2002	2003	2004	2005	2006	2007	2008	2009	2010	2011	2012	2013	2014	2015	Average
No. of DP	91	108	85	98	80	99	145	175	131	112	106	92	108	85	106	125	109
Value	\$0	\$0	\$0	\$0	\$0	\$0	\$18,381,600	\$28,995,150	\$14,049,130	\$30,905,530	\$9,527,300	\$26,070,150	\$4,226,620	\$12,123,900	\$13,501,000	\$18,381,600	\$14,009,610



## SUBDIVISION AND DEVELOPMENT 2000

The tables and charts above represent the number of development permits and subdivision applications processed by the annual estimated value of the development permits. From these charts it is easy to see the cyclical nature of development activity in the province and the country.

# PLANNING PROJECTS 2016

The following projects are budgeted by County Council to be undertaken by the Planning and Development department in 2016:

- The joint servicing study with the Town of Stettler that was started in 2014 will be completed in 2016. The purpose of this study is to determine water supply and sanitary sewer servicing standards within the Intermunicipal Development Plan area. This project is being undertaken by a consultant. The results of this study will provide input to an in-house review of the Stettler Intermunicipal Development Plan that was adopted in 2009. These projects will culminate in the preparation of a new Southeast Stettler Major Area Structure Plan in 2017/18.
- The first phase of residential lot development is on County-owned land in the east part of the Hamlet of Erskine. This project is part of the implementation of the Erskine Concept Plan which was adopted in 2012.
- The Rural Addressing Bylaw was amended in 2014 to provide for urban style house numbering in multi-lot subdivisions and hamlets. In 2016 on

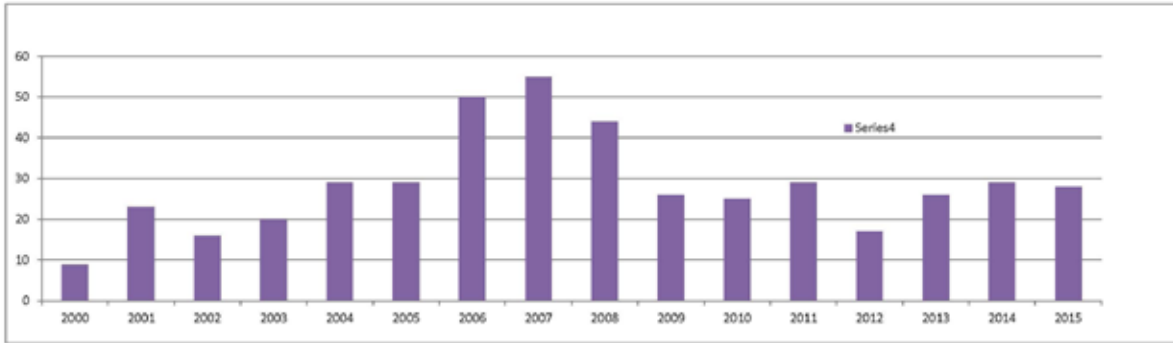
going forward street name signs in all hamlets and multi-lot subdivisions will be confirmed and corrected if necessary, and houses will be assigned new numbers where required to comply with the bylaw. All affected residents will be notified of their new addresses in the regular mail.

- Prepare a shoreline management plan, working closely with lakeshore communities and Alberta Environment and Parks (formerly Sustainable Resource Development). As a first step in identifying the issues, a survey questionnaire was available from September to December of 2015. The results of this survey will assist in understanding the issues at the lake, discussing those and others that may be identified, and developing relevant policies. One or more workshop(s)/open house(s) will be held during the summer of 2016. Ultimately the project will address matters such as the improvement of public lake access points and the regulation of seasonal docks/boat lifts/piers.

If you have an interest in any of these projects, please do not hesitate to contact the Planning and Development department at 403-742-4441.

## Subdivisions

Year	2000	2001	2002	2003	2004	2005	2006	2007	2008	2009	2010	2011	2012	2013	2014	2015	Average
No. of SUB	9	23	16	20	29	29	50	55	44	26	25	29	17	26	29	28	28



15

## ACTIVITY – COUNTY OF STETTLER No. 6 2000 to 2015

The County of Stettler No. 6 Planning and Development department for the past 16 years from 2000 to 2015. It also shows development and subdivision activity, how these cycles more or less correspond with each other and with the cycles of economic

# SITE INSPECTIONS 2016 SCHEDULE

Many County residents have at some point or another discovered they needed a development permit in order to expand their homes, add a garage, or even to begin a new business. And, as is so often the case, people want to get going on this project as soon as possible. While there are many circumstances in which the issuance of a development permit is almost automatic (e.g. building a first residence on a residential property) there is still one very important step that the County must perform before issuing a development permit.

We need to inspect the site to be certain there will not be a future issue or potential issue with the proposed development. We need to evaluate the roads leading to the land, the approaches, the slope of the land, and that it does not infringe on any wetlands, as well as any other concerns we might have in regards to a specific application. In order to be as efficient as possible, the County's Planning and Development department has "Site Inspection" days twice a month on the second and fourth Tuesdays of the month. To ensure

your application gets a site inspection as soon as possible after you submit it, and is not delayed too much pending the site inspection, it would be prudent to submit your application by the Friday previous to these scheduled site inspection dates.

The upcoming Site Inspection dates for the remainder of 2016 are:

June 7 and 21  
 July 12 and 26  
 August 9 and 23  
 September 13 and 27  
 October 11 and 25  
 November 8 and 22  
 December 13

We encourage you to contact Jacinta Donovan or Johan van der Bank at (403) 742-4441 with any questions or concerns you may have. We will be happy to answer your questions and provide whatever assistance we can with your development permit or subdivision.



# AMBULANCE

## Workplace Violence Prevention and Response

The Stettler District Ambulance Association (SDAA) believes it is important to create awareness and provide education for practitioners in regards to violence in the workplace.

The Association strives to:

- To foster a respectful and supportive workplace environment with the Stettler District Ambulance Association (SDAA) that contributes to the safety and security of individuals
- To ensure that workplace violence is considered a serious offence and is addressed appropriately and in accordance with SDAA legal obligations, values, and principles of a just culture.
- To set out the strategies for the prevention of and response to violence against SDAA staff members and representatives in the workplace

- To enhance awareness of the rights, responsibilities, and supports of individuals who are subjected to, or who become aware of situations involving physical or non-physical violence (including sexual abuse and harassment and cyber bullying) against SDAA staff members or representatives in the workplace

SDAA is committed to providing respectful, secure and supportive work environments to ensure the safety and well-being of all individuals. SDAA does not tolerate or condone any violent actions or behaviors towards any SDAA staff member or representative. SDAA will take action in an objective manner to address reports of workplace violence without retribution to SDAA personnel who report incidents in good faith. This commitment is consistent with SDAA mission, vision and values as well as the standards of duty to disclose and protection from retaliation.

SDAA supports these commitments through the establishment, implementation, communication,



and maintenance of appropriate processes and procedures that address the key elements. SDAA practitioners were involved in education and training in January to help promote a violence free workplace which fosters respect for all.

### **Workplace Bullying**

Workplace bullying has recently become recognized for what it is — a form of violence that destroys health, careers and organizations.

Bullying can be physical but in the workplace is more likely to be psychological and emotional. Its effects are devastating. Over time, bullying can destroy a targeted person's ability to work ever again and can result in death from stress-related conditions like hypertension, or even from suicide.

Popular myth says bullies only attack weak people. In the workplace the opposite is true.

Workplace bullies selectively target people who are competent, people they see as threats to themselves. The purpose of a bully's attack is to drive a competent person away.

People enduring this enormous stress seldom have the time or the energy to read dozens of books and websites in search of advice. They need to know right away if they're the target of a workplace bully and, if so, have at their fingertips clear guidelines on how to start protecting themselves.

For more information please go to [www.stopworkplacebullies.com](http://www.stopworkplacebullies.com).





# TAKE IT OR LEAVE IT CENTRE NOW OPEN

On April 23, we celebrated the Grand Opening of the Take it or Leave it Centre at the Stettler Transfer Site. This new facility is where residents can drop off unwanted, but still usable large items, and where others can come and take them for free. The Stettler Waste Management Authority (SWMA), which is administered by the County of Stettler, spearheaded this new facility after they saw a need to keep large items out of the landfill in the waste pile, which could be kept in use and given a longer life in a new home.

The Take it or Leave it Centre is for the recycling of large items only including furniture, large appliances, large electronics that are in working order, large sporting equipment items including bicycles, exercise equipment, doors, dressers, vanities, and yes, even the kitchen sink. It's for anything LARGE that still works. They can not accept mattresses, baby furniture, used carpet, or small items. To fund the building, generous cash donations were made by Superfluity,

TransCanada Corporation, and ATCO, while METALEX Metal Buildings supplied the labour to build the new facility.

The Take it or Leave it Centre is open daily from 10:00 a.m. - 6:00 p.m. If you have questions about what they can accept feel free to stop by and visit with any one of our friendly staff members at the Stettler Transfer Station.

The Stettler Waste Management Authority is run by a board comprised of members from the County of Stettler, the Town of Stettler, the villages of Big Valley, Botha, Donalda and Gadsby and the Summer Villages of Rochon Sands and White Sands. The County of Stettler administers SWMA. For questions, comments or concerns please contact the County of Stettler at 403-742-4441.



# STETTLE WASTE AND RECYCLE

Since the Eco Centre opened at the Stettler Transfer Station 2 1/2 years ago, we have recycled or responsibly disposed of the following items that are toxic to our air, water and soil and kept them out of our landfill.

	Total in 2.5 years	Average per year
Paint Cans	8690 cans	3476 cans/year
Fluorescent bulbs and compact fluorescent bulbs	10,800 bulbs	4320 bulbs/year
Household batteries (ends taped)	5036 lbs. (2.5 metric tonnes)	2014 lbs./year
Propane cylinders (non-refillable)	870 cylinders	348 cylinders/year
Ink jet/laser toner cartridges	1209 lbs.	438 lbs./year
*Household Hazardous Waste	83 drums	33.2 drums/year

\*Household Hazardous Waste includes any item that has a WHMIS symbol on it: toxic, corrosive or flammable.





*Union Hall*

## 2016 RSPF FUNDING

The Recreation Special Project Funding (RSPF) was established in 2006 in order to set aside funds to help with the construction and/or enhancement of recreational facilities and assist with programs in order to serve the needs of the County's rural population, with the exception of properties owned by the Stettler Agricultural Society.

The Recreation Special Project funding in the amount of \$50,000.00 was awarded at the December 9th, 2015 County of Stettler Council meeting. Applicants that are successful in receiving funding must submit receipts proving that the work has been completed on the proposed project, before the RSPF funds are released for payment.

The following groups were successful in the last round of applications:

Stettler & District Ag Society	Riding Arena Roof Repair	\$ 6,000.00
Botha Community Centre	Cement pad and Stair replacement	\$ 6,000.00
Donalda Agricultural Society	Arena Roof Repair	\$ 12,000.00
Erskine Seniors Centre	Painting and Flooring	\$ 6,500.00
Union Hall Good Times Club	Window and door replacement	\$ 4,000.00
Erskine IOOF Lodge	Hall Roof Repairs	\$ 2,500.00
Ewing Community Centre	Roof replacement	\$ 6,500.00
Rochon Sands Hall & Rec Assoc.	Repair of Tennis Courts	\$ 6,500.00



## ZERO TOLERANCE

Please contact our Planning and Development Department when you start planning your development in order to ensure you obtain the required development permit and other approvals in good time. Anyone who intends to undertake a non-agricultural development in the County of Stettler No. 6 is required to first obtain a development permit from the County. This could also help you avoid any unforeseen expenses that you may incur if your idea for your development does not comply with the County's policies and bylaws (e.g. yard setbacks, road upgrades, etc.), so that you can make the necessary adjustments before you start digging or laying down concrete.

The County does not want to penalize anyone. Rather, we want to work with ratepayers to ensure the proper development approvals are issued in order to comply with Municipal, Provincial and Federal regulations. The County's Fee Bylaw states a penalty of \$1,000 for residential developments and \$2,000 for commercial developments that are started without the benefit of a development permit.

The County of Stettler No. 6 has adopted a zero tolerance approach to persons who start construction without the benefit of a development permit. All relevant penalties required pursuant to the County's Fee Schedule and other actions under the Municipal Government Act (MGA) for such a contravention will be strictly imposed on anyone who fails to obtain a development permit prior to construction start. This information has been made widely available and no exceptions will be made.

## SETBACKS

Remember, you do not need a development permit from the County for any agricultural operation as long as any structures such as hay sheds, granaries, livestock shelters and barns meet the 125 feet setback from the centerline of the County road.

Shelterbelts must be set back 75 feet from the centerline of the road. If you wish to vary from these setbacks for any agricultural operation, you would require a development permit. You may need a license/permit from the Natural Resources Conservation Board if your agricultural operation includes a confined feeding operation (please call the NRCB at 1-403-340-5241). If development is proposed along a provincial highway a Roadside Development Permit issued by Alberta Transportation is required. Please contact Alberta Transportation at 403-854-5550 or visit their website at [www.transportation.alberta.ca](http://www.transportation.alberta.ca). For more information regarding development please contact the County's Planning & Development Department at 403-742-4441.



*Left to Right: Barb Gano, Treasurer, Jane Skocdopole, Chair and Mary Zazelenchuk, Library Manager present their 2016 programs and financial summaries to Council. The County of Stettler funds the Stettler Public Library*

## STETTLER PUBLIC LIBRARY ACTIVITIES

Spring and summer are going to be busy seasons for the Stettler Public Library. At the library there are programs planned for every type of person; if you enjoy using technology, making and creating your own projects, socializing or if you want to come check out our new books, there is something for you to come check out.

Here are some of our highlights of the library over the next few months:

June focuses on making and creating including a Father's Day activity and craft for the children to do to celebrate their father on June 11th.

On July 4th we will see the return of the TD Summer Reading Program. The program has different

themes every week and will have kids exploring the outdoors, reading books, using technology and having fun. It will run until August 26th. The schedule with more details will be posted on the website [spl.prl.ab.ca](http://spl.prl.ab.ca).

In October the popular Stettler Film Circuit will be returning. Passes will be on sale in September and this program shows films from the TIFF Film Circuit. These films are not always in the theaters and it is a great chance to get out and see a renowned film.

Many more programs planned, so keep an eye out for additional activities on our website [spl.prl.ab.ca](http://spl.prl.ab.ca) and our Facebook page Stettler Public Library.



*Donalda Equestrian Centre*



# DONALDA EQUESTRIAN CENTRE

If you are looking for a nice dry place to ride you will want to check out the NEWLY RENOVATED 85'x200' riding arena located in Donalda, Alberta. This fantastic facility boasts many recent upgrades and can accommodate a variety of events and activities.

- 85'x200' Riding Arena
- Kitchen Facilities
- Tack Lockers
- Panels available for round pens and cattle handling
- Affordable membership and rental rates

The Donalda Equestrian Centre is available for clinics, rentals and public riding. For more information or to rent these Donalda facilities, text Krysta Goodkey at 403-505-9430.

*Owned and operated by the Donalda and District Agricultural Society.*



# CHANGES TO THE MUNICIPAL GOVERNMENT ACT (MGA)

The Municipal Government Act (commonly referred to as the MGA) is the piece of legislation that is most important to towns, counties and villages. This single piece of legislation sets out rules, guidelines and regulations for how the County can collect taxes, charge fees, enforce bylaws, use our land, plan for the future and just about every other function the County carries out. The MGA has not had a significant review in over 15 years, so these changes were welcomed by many municipalities. The Alberta Government has been consulting with cities, towns and counties for over 3 years, and the amendments to the MGA were finally tabled in the Legislature this spring. Some of the most significant changes that affect the County are outlined below.

## Sharing with our Neighbors

The MGA outlines the purpose of a municipality, and the MGA furthers that purpose by including working collaboratively with neighboring municipalities to plan, deliver and fund inter-municipal services as another one of our purposes, furthering the concept that

municipalities can no longer carry out their business in a bubble, and that they must consider the well-being of their neighboring municipalities while planning.

The MGA also mandated that Municipalities are to develop a Collaboration Framework which will further outline the planning, delivery and funding of core services to all residents. These plans must be completed with two years. Luckily for the County of Stettler residents, although it isn't formalized into a framework, the County and Town and our surrounding villages already cooperate on many services offered in our community including ambulance, fire, waste, housing, recreation and planning land use. These frameworks should just be a formal process to entrench the cooperation we already do so well.

## Stronger Planning Documents

One of the things that will affect many smaller villages around the County is the need for new planning documents. Each village will be required to have a Municipal Development (MDP) which



outlines how the village will grow and develop, and an Inter-municipal Development Plan (IDP) which outlines how the village will interact with the County. Both of these documents will require significant time and resource investment, something our rural communities are already struggling with. Our hopes is that the province will open up some funding to help small communities meet these requirements.

### Councillor Conduct & Training

Each municipality will now be required to offer training for councillors, but where the legislation falls short, is **REQUIRING** elected officials to take it. There are also forthcoming regulations to the MGA that will outline training material and address the Conduct of Councillors. Municipalities will be required to adopt a councillor code of conduct, which will bring accountability and transparency to the public.

### Changes to Taxation

The MGA will now impose a tax ratio of non-residential taxes to residential taxes of 5:1. What this means is that the highest non-residential tax rate can be more than 5 times higher than its lowest residential rate. This was put in place, mainly to maintain economic competitiveness consistent across the province, ensuring that counties and towns have to fairly tax both businesses and residents so that communities can continue to grow and prosper.

The County will also now have the ability to split up non-residential property into sub-classes – allowing for separate tax rates for different types of commercial entities. This will allow the County to set mill rates that will separate “mom & pop” businesses from large industrial/corporate business, keeping our economy strong, vibrant and local.



The Emergency Operations Centre (E.O.C), as it would be set up at the County of Stettler in the event of an emergency or a disaster in our region.

# STETTLER REGIONAL EMERGENCY MANAGEMENT

Our two members of the County of Stettler Protective Services department serve as the Director of Emergency Management (DEM) and the Deputy Director of Emergency Management (DDEM). They are responsible for the Stettler Regional Emergency Management Agency which covers the Town of Stettler and all municipalities and Summer Villages within the geographical boundary of the County of Stettler No.6.

**In the event of a local state of emergency being declared by one of the municipalities, the County of Stettler Meeting Room is converted into the E.O.C. to manage the event. Currently we have 53 trained staff members who would coordinate, fill positions and assist the E.O.C.**

E.O.C. staff are trained in emergency management and from the E.O.C. they would assist all agencies at the disaster site to provide resources and whatever else may be required to manage the event. Additionally, they would be keeping elected officials informed so that they can make the appropriate decisions.

Our administration building is equipped with a backup emergency generator that is capable of providing power to the entire building in the event of a power outage. As well, all stations have their own internet access and dedicated phone lines.

The various boxes you see contain all the materials required for each station and you will also note some of the 'situation boards' around the room. These boards would be used during the event to record pertinent information to assist all persons in the E.O.C.

The big table in the middle of the room is referred to as the 'war table' which would have various maps and other documents on it. It is here that planning cycles (meetings) would be held by the E.O.C. staff to exchange information, assess needs and set an action plan for the next time period.

On Thursday, April 14 2016 the Stettler Regional Emergency Management Agency conducted a tabletop exercise entitled *Wicked Wind*. In attendance were personnel including municipal elected officials from the County of Stettler, Town



Training exercise *Wicked Wind* unfolding on April 14 at the County of Stettler.

of Stettler, Villages of Big Valley, Donalda and Botha, Summer Villages of White Sands and Rochon Sands, Rochon Sands Provincial Park, Ol' MacDonald's Resort, Canadian Red Cross (Red Deer), Stettler RCMP, Stettler Regional Fire & Rescue, Stettler District Ambulance Association, County of Stettler Municipal Enforcement, Stettler and District FCSS and Alberta Emergency Management (AEMA) Field Officers.

The scenario unfolded as a massive storm front which had hit the south shore of Buffalo Lake, causing extreme damage to Ol' MacDonald's Resort and the summer villages, lake subdivisions and provincial parks with numerous people injured, trapped in collapsing buildings or missing.

The goal of the exercise was to test our Regional Plan and trial an incident management team comprised of regional partners in response to the multi-jurisdictional disaster.

The tabletop walked through what the E.O.C.'s responsibilities would be and how they could

assist the field. The E.O.C. was also required to open a reception centre to assist those that would have been displaced by the event.

The exercise went very well with many positive outcomes between all involved and a better understanding of what the different roles of all the players were. The exercise was facilitated by consultants and sponsored by the Ministry of Municipal Affairs from a Fire Services Emergency Preparedness Program grant.

**Know the Risks**  
**Make a Plan**  
**Get a Kit**

We encourage everyone to download the Alberta Emergency Alert App on their phones, and to have a 72 hour emergency kit and plan in place for you, your family and your livestock in the event of a disaster. Visit [www.getprepared.gc.ca](http://www.getprepared.gc.ca) for more information.

## Save a Tree

Sign up for e-versions of County Connection magazine by contacting [nthorsteinsson@stettlercounty.ca](mailto:nthorsteinsson@stettlercounty.ca) or by calling 403-742-4441.

It's also available on our website at [www.stettlercounty.ca](http://www.stettlercounty.ca).



# 2016 TAX NOTICES MAILED BY JUNE 30

County Council passed a municipal tax increase of 3% for Farmland, Residential, Non Residential and Machinery & Equipment (M&E) on June 8 at their regular Council meeting.

An increase of 1.5% covers inflation based on the current Alberta Consumer Price Index, with the remaining 1.5% put into reserves for future capital expenditures which may include bridges, roads and equipment.

A residential home assessed at \$200,000 for 2016 for example, would see an increase of \$27.88 which reflects a total increase of 1.97%.

In accordance with the Property Tax Bylaw 1565-16, the County will raise \$20.5 million by general municipal taxation. The breakdown of where these taxes are distributed is as follows:

County of Stettler -	\$14,616,785
Stettler Waste -	\$296,088
Stettler Housing -	\$574,000
County Recreation -	\$100,000
Town Recreation -	\$496,088
School Levy -	\$4,423,649

To find out how where the County of Stettler taxes are used, you can look at the 2016 Budget on our website at [www.stettlercounty.ca](http://www.stettlercounty.ca). Every year in December or January, we hold a Public Budget Information Session where you are invited to attend and review the draft budget and join the discussion. We welcome and encourage public input and participation in this process.

2016 Tax payments are due Monday, October 31, 2016.

# COMMUNITY EVENTS



## An Affair for the Heart Charity Golf Tournament

4 Person Best Ball Format

Friday, June 17, 2016

Registration at 3:30 p.m.

Shotgun Start at 4:00 p.m.

at Stettler Golf and Country Club 4701 - 61 Street Stettler

Registration includes 18 holes of golf, hole prizes and a delicious dinner.

Registration \$80/person

Stettler Health Services Foundation.

## Pilot Knob Father's Day Breakfast

Sunday, June 21 from 9:00 a.m. - Noon at Pilot Knob, 1/2 mile west of Highway 56 on Secondary Highway 601.

Pancakes, French Toast, Sausages, Ham, Scrambled Eggs, Fruit Salad, Coffee, Tea, Orange Juice.

Donations in lieu of a set price.



July 1st - Canada Day Celebrations - Donalda 11 a.m. - Midnight

Pie and Coffee at the drop in Centre; Entertainment/Children's Games at the Lamp 2-4; Hot dogs, sundaes and banana splits at the museum; County market 12-4; Parade @ 4 Steak Supper by Teresa's Catering on Main St. at 6; Live Band by the Lamp 7:30-11:30.



# Be an Informed Voter

The County of Stettler invites you to attend public information sessions prior to the vote of electors.

**Tuesday, June 21**  
**6:00 p.m.-8:00 p.m.**  
**OR**

**Wednesday, June 22**  
**2:00 p.m.-4:00 p.m.**

**County Public Works Shop**  
**6602 - 44 Avenue**  
**Stettler, AB**

- Q & A Session with Council
- Viewing of all the plans for the new shop
- Tour of the existing facility

EVERYONE WELCOME

Please call 403-742-4441 for more information.



Public Mail Agreement #41398593  
Return Undeliverable Canadian Addresses to:  
County of Stettler No. 6  
Box 1270  
Stettler, AB T0C 2L0