

Fall 2017

# Stettler County Connection

## **PW FACILITY**

OPEN ON TIME-  
UNDER BUDGET

pg 4

## **BOTHA**

THE NEWEST HAMLET

pg 11

## **Cast**

your vote

October 16

pg 6-10

## HOLD HARMLESS AGREEMENTS DUE-Snowplowing

Don't get caught stuck in the snow!  
Hold Harmless agreements for the 2017-2018 Snow Season are due. After you sign your agreement with us, crews must inspect your driveway for safety, as required by our insurance providers. This process takes time. Our equipment can not enter your driveway prior to the inspection. Don't wait for the first snowfall - staff will be busy clearing snow, not inspecting driveways.  
Plan ahead in case winter comes early!



# TAX PAYMENT DEADLINE TUESDAY, OCTOBER 31

Tax payments will continue to be collected at the County Administration Building - not at the new Public Works Facility. See page 14 for more info.

Reminder: As communicated with your 2017 Tax Notice, the County of Stettler will no longer be accepting VISA or MASTERCARD for tax payment due to the costs incurred by using these companies.

Options for Tax Payment are as follows:

- Interac\*
- Cash\*
- Cheque
- Online Banking
- Or payment can be made at most banking institutions.

- Autopay Program – Tax Payments can be distributed over 12 months if you sign up for our Autopay Program. Your 2017 Taxes must be paid in full, at a zero balance, and then you may register to begin Autopay for January 1, 2018, for the 2018 Tax Year. Payments will be automatically withdrawn from your bank account each month.

### Telebanking

The County of Stettler No. 6 is implementing a new banking system where payments will be downloaded into our financial system directly from the bank. Through this process the payments for Taxes and Utilities need to be separate. When making your online payments for taxes and utilities you need to enter the following:

- Taxes: Use your Roll Number or Customer ID.
- Utilities: Use your Customer ID or Utility Account Number.



**01 COUNTY TAX DEADLINE**  
October 31, 2017

**03 GRAND OPENING**  
Reeve's Ramblings

**04 ON TIME UNDER BUDGET**  
PW Facility open for business

**06 ELECTION 2017**  
Voter information pg 6-10

**11 WELCOME BOTHA**  
Botha joins County of Stettler

**12 STATION 3 - DONALDA**  
Firefighters wanted

**13 INCREDIBLE DONATION**  
Saves lives

**14 MORE AUTOMATED**  
Phone System upgrades

**15 2017 PHEASANT FESTIVAL**  
Volunteer opportunities

**16 GRAND OPENING**  
So much to celebrate

**18 PHOTO CONTEST 2017**  
Now accepting entries

**20 TASTE OF THE HEARTLAND**  
Celebrating local producers

**22 WATER FOR LIFE**  
White Sands and Brownfield extensions

**24 URBAN ADDRESSING**  
Updates in hamlets and subdivisions



# COUNTY CONNECTION

## INTRO

It's almost time to cast your ballots Stettler County!

This is a very exciting time for us here at the County. Campaign signs are going up, prospective councillors are knocking on our doors and everyone is speculating and anticipating what the October 16 election results may be.

I discussed democracy and our right, and in my opinion duty, to vote in the last issue but apparently I still have more to say. I took a look at the statistics - specifically VOTER TURNOUT for the last County election in 2013, and to tell you the truth I was more than a little horrified at the numbers - or should I say the LACK of numbers of County residents turning out to vote.

Did you know only 28% of our Stettler County people bothered to vote last election? Out of every 10 people, less than 3 turned up. Did you know certain wards have reputations? I didn't. But apparently Byemoor/Endiang can boast highest voter turnout for elections - and Big Valley - yes I'm calling you out Big Valley, you have the most dismal voter turnout. Don't laugh Botha-Gadsby, you're right there with them. We can do better than 28%.

No excuses. Election day is October 16...if you're anything like me you will turn up at the Advance Vote on October 12 or 13, because WHAT IF something were to happen between the Advance Vote and Election Day. Don't know if you'll be in town? Contact the Returning Officer for this election (403-579-2460), get a Special Ballot and return it to her by the 13th. No excuses. Take a friend, pick up your neighbor - exercise your democratic right.

Niki Thorsteinsson  
Director of Communications



## Stettler County Connection

Fall 2017

Volume 7 Issue 2

Editor-in-Chief

Tim Fox

Managing Editor

Niki Thorsteinsson

Printed by

Kathy's Printing Service

All Rights reserved. Any reproduction of the contents without written authorization from the publisher is strictly prohibited. The publisher cannot be held responsible for any errors or omissions found within this newsmagazine, or for loss of, or damage to, unsolicited material submitted by readers.

Availability: Current Issues of County Connection can be obtained from the County of Stettler Administration Building while supplies last.

Subscription: County Connections is delivered free of charge to taxpayers, with exception to those who do not live in the Province of Alberta or have unsubscribed from our mailing list. If you wish to receive future copies, please make the request to the Managing Editor at [nthorsteinsson@stettlercounty.ca](mailto:nthorsteinsson@stettlercounty.ca). You may also view the current and back issues of the County Connection on our website at [www.stettlercounty.ca](http://www.stettlercounty.ca).





Reeve Wayne Nixon volunteering at the Long Table Dinner, Main Street, Stettler

## REEVE'S RAMBLINGS

With the grand opening of our new County of Stettler Public Works Facility held on July 20, we began bringing County operations into the 21<sup>st</sup> century.

This modern, practical and very functional facility will not only increase the efficiency of our operations but it will also boost the morale of the men and women working there. This impressive building should be a source of pride for all the ratepayers of our county.

The decision to build a new facility, of course, was not an easy decision for this council, but after reviewing the needs for the future, the state of the old shop, location, safety, and health issues with the old facility, council voted to move forward.

Despite the delays due to petitions and a plebiscite and the added costs due to increased material prices and costs for winter construction heating, the project came in on time and approximately \$750,000 under budget.

I can't say enough about the project manager for Scott Builders, whose attention to detail from safety, to quality of work and quality of materials, to timely completion, gave us as council a sense of confidence in the project.

Although we chose to go the route of design-build which leaves the project management responsible for subcontracting, we asked Scott Builders to consider local contractors wherever possible, and they have complied by subcontracting several local companies sharing in some of the construction. Local supply businesses and hotels and restaurants have also benefited from the shop project.

The Council of the County of Stettler pride ourselves in being a forward-thinking and responsible government.

We believe in the future of the county, with the needs of our ratepayers being met for many years to come.

Our new Public Works Facility is major step in this direction.

Thank you to everyone who attended our Grand Opening!

# 4



## OPEN FOR BUSINESS ON TIME - UNDER BUDGET

We were pleased to welcome the public to the Grand Opening of the new County Public Works Facility on Thursday, June 20.

The new facility was built to house County operations in order to continue to provide you, and our County with efficient municipal services for decades to come. We are proud of the work and service we have been able to provide over the past 47 years at our previous shop, and we are excited for the improved operational abilities and advancements we have realized in our new facility.

We would like to recognize and thank our Council, whose vision of progress and dedication to employee safety made this facility possible. We would like to thank Scott Builders and their construction managers, the contractors and sub-contractors, and the numerous men and women who put their time and efforts into the excellent workmanship and exceptional construction of this facility. Because of all of their efforts, I am extremely proud of this project.

To say we were pleased with the timelines, the dedication to a safe work site from start to finish, and the commitment to providing an excellent product while maintain prudence with our budget, would be an understatement.

Scott Builders management of this project well-exceeded all of our expectations. Together, we were able to bring this project in approximately \$750,000 under budget.

We celebrate and reflect on all the achievements surrounding this project. The journey began back in 2012 when the Council at that time recognized a need to investigate replacing the old shop. This decision was based on the age, the size and the condition of the shop. The idea grew when new soccer pitches and ball diamonds appeared across the street, and a seniors living residence became our new next door neighbors.

Safety is, and always has been a major concern of Administration and Council, and the risks were expanding before our eyes with walking trails, residential developments, recreational fields and foot traffic including children, pets and senior citizens.

Health and safety concerns over the working conditions in the old public works facility were identified and major expensive upgrades were flagged with initial estimates adding up to 30% of the cost of building a new facility. Combined with the realization of cost per square foot of a



new facility being \$170/SF, plus a downturn in the economy presenting an opportune time to build new, presented us with a window through which to climb.

Scott Builder's attention to time-management and staff's dedication to eliminating extra's along with the absence of cost over-runs, has brought us happily to the successful completion of this project.

This new facility not only houses all Public Works employees and equipment, but also provides the necessary space and equipment to accommodate Agricultural Services and Environmental Services (Utilities). We can be proud of a building that is up to code, energy efficient and able to support future county operations and municipal services and needs for generations to come.

We would like to recognize and thank the Provincial Government. Municipal Sustainable Initiative grant funding, created to support local infrastructure priorities with a focus on building strong, safe, resilient communities enabled us to complete this project. From them, we received approval to finance nearly the entire cost of this new state-of-the-art facility using MSI grant funding. Under

Council's direction – we were able to do this without borrowing a single dime.

The new facility along with the new location, serves as an excellent placement to handle all of our heavy equipment coming and going, without staff having to worry about urban traffic which presents constant potential hazards.

The new location will also provide opportunities in the future for non-profit, public and/or private facilities to enhance and serve the ever-changing and growing needs of our community.

We look forward to continuing to serve the people of the County of Stettler. And we thank everyone who was able to join us for the grand opening. Our new facility is now *Open for Business*.

Tim Fox, CAO for the County of Stettler

MOVING FORWARD



# ELECTION 2017 COUNTY CANDIDATES

At the close of Nomination Day on Monday, September 18, 2017, the County of Stettler will see elections in six wards. Wayne Nixon in Donalda-Red Willow, the County's current Reeve, was acclaimed as a Councillor as he was the only candidates to put forth nomination papers in Ward 7.

The County Wards with elections are listed below:

**Ward 1: Byemoor-Endiang**

Rob Somerville  
Les Stulberg\*

**Ward 3: Botha-Gadsby**

Larry Clarke  
Elaine Hoekstra

**Ward 5: Erskine South-Warden**

Earl Marshall  
James Nibourg\*

**Ward 7: Donalda-Red Willow**

Wayne Nixon\* (acclaimed)

**Ward 2: Big Valley**

Dave Grover\*  
Terry Schiffner

**Ward 4: Stettler**

Blake Chapman  
Ernie Gendre\*

**Ward 6: Erskine-Buffalo Lake**

Joe Gendre\*  
James Marshall  
Doug McKay  
Cheri Neitz

**\*indicates incumbent candidate**

Election Day is being held on Monday, October 16, 2017 and polls will be open from 10:00 am – 8:00 pm. A list of polling station locations is available on page 8 and also on our website at [www.stettlercounty.ca](http://www.stettlercounty.ca). Not available to go vote on October 16? Voters can vote in the **Advance Polls** on Thursday, October 12 or Friday, October 13 from 10:00 am – 8:00 pm at the Stettler Agriplex, Heritage Room, 4516-52 Street, Stettler, AB.

Voters may also request a **Special Mail-in Ballot** by calling Doreen Nixon Returning Officer at 403-579-2460 or emailing [2017countyelectionden@gmail.com](mailto:2017countyelectionden@gmail.com) and requesting a Special Ballot. Voters can then mail-in their ballot and still be counted. This is perfect for residents who are away on holidays, in the hospital or away working. The Special Ballot must be received by the Returning Officer before 8:00 pm on Friday, October 13, 2017 to be considered.

## VOTER IDENTIFICATION REQUIREMENTS

Proof of identity and current residence is now required to be able to vote in municipal elections. Any of the following documents that has your name and address on it will be accepted as valid proof:

- Photo identification issued by a Canadian government or agency, whether federal, provincial or local;
- Bank/credit card statement or personal cheque;
- Correspondence issued by a school, college or university;
- Government cheque or cheque stub;
- Income/property tax assessment notice;
- Insurance policy or coverage card;
- Letter from a public curator, public guardian or public trustee;
- Pension Plan statement of benefits, contributions or participation;
- Residential lease or mortgage statement;
- Statement of government benefits: e.g. Employment insurance, old-age security, social assistance, disability support, or child tax benefit;
- Utility bill: e.g. Telephone, public utilities commission, television, electricity, gas or water;
- Vehicle ownership, registration or insurance certificate; or
- A letter or form (attestation) confirming that the person lives at the stated address. The letter can be signed by any of the following:
  - authorized representative of a commercial property management company;
  - authorized representative of a correctional institution;
  - authorized representative of a First Nations band or reserve;
  - authorized representative of a post-secondary institution;
  - authorized representative of a facility that provides services to the homeless; or
  - authorized representative of a supportive living facility or treatment centre;

### Frequently Asked Questions

#### What if I don't have any photo ID like a driver's license?

- It doesn't matter. Just bring anything else you have from the above list that has your name and address on it.

#### Do I need more than one document?

- No, only one document with your name and address is needed. \*

#### What if all of my documents have a post office box address?

- That is ok. As long as it makes sense that a person in your voting subdivision or ward would have a post office box at your mailing address, it will be accepted. The post office box doesn't have to be in your voting subdivision or ward – just reasonably close by.

#### I used to have to sign a form to say that I am eligible. Do I still have to sign that form?

- Yes, you will still have to sign the Statement of Elector Eligibility as well as provide one of the above documents that contains your name and address.

#### What if I don't have any accounts or documents in my own name?

- Have your landlord, facility, or organization manager sign a letter or form (attestation) to confirm your address, and bring it with you to the voting station. Your municipality may have a form that you can use, so check with them. You will have to do this before you come to vote, so plan ahead.

\* These are the basic requirements for all Alberta municipalities. Your local municipality may have additional requirements or accept additional types of ID. Please check with them.

# Election Day

## Monday, October 16, 2017

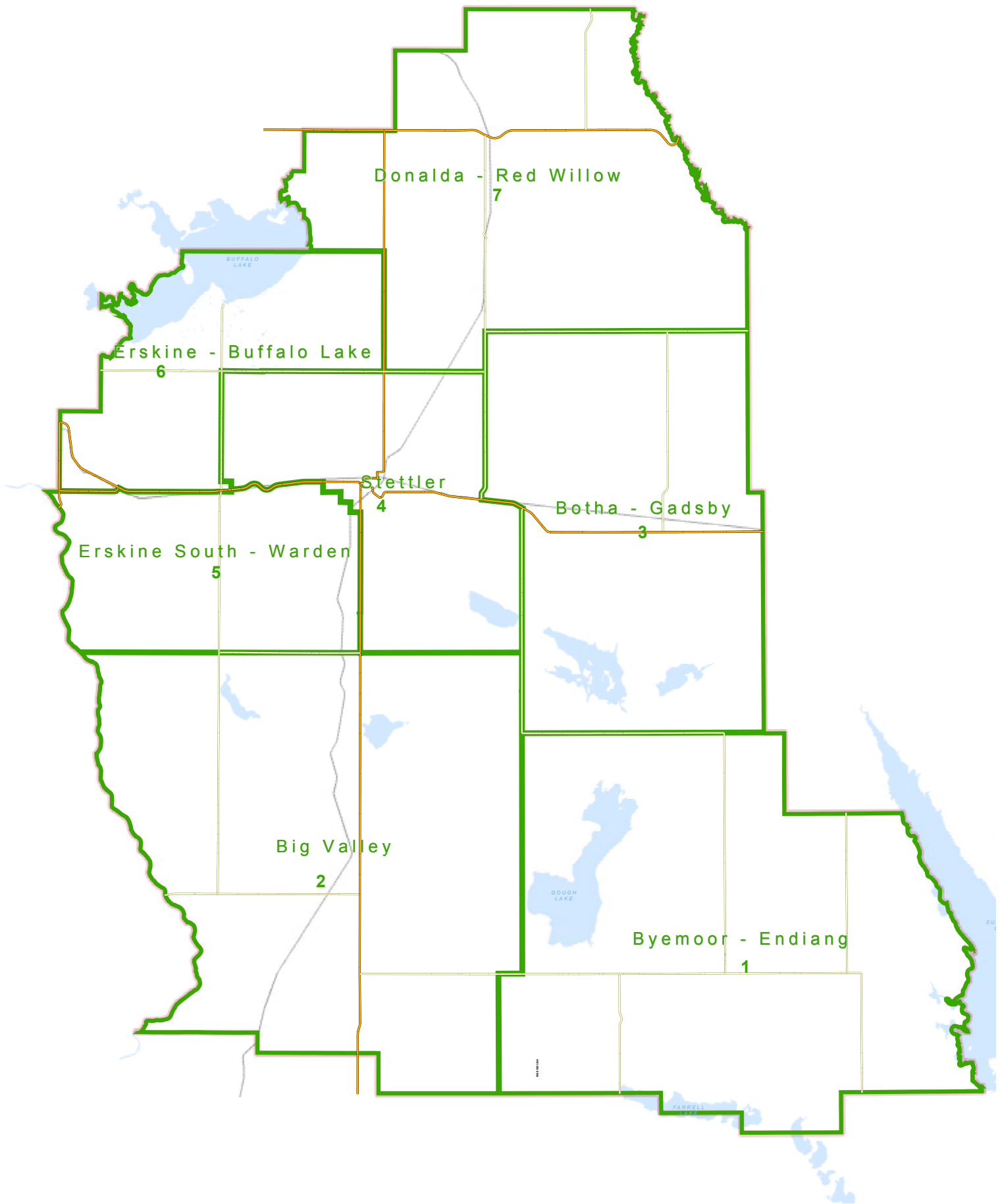
Every Voting Station will open promptly at **10:00 am**

and will be kept open continuously until **8:00 pm**

only those INSIDE the voting station at 8:00 pm will be permitted to vote.

**\*Note that every resident of the County of Stettler can vote at the Stettler Agriplex, Heritage Room at 4516-52 Street, Stettler, AB\***

WARD 1: Byemoor-Endiang	Byemoor Community Hall Stettler Agriplex, Heritage Room
WARD 2: Big Valley	Big Valley Community Hall Stettler Agriplex, Heritage Room
WARD 3: Botha-Gadsby	Botha Hall Stettler Agriplex, Heritage Room
WARD 4: Stettler	Stettler Agriplex, Heritage Room
WARD 5: Erskine South-Warden	Erskine IOOF Community Hall Stettler Agriplex, Heritage Room
WARD 6: Erskine-Buffalo Lake	Erskine IOOF Community Hall Stettler Agriplex, Heritage Room
WARD 7: Donalda-Red Willow	Donalda Drop In Centre Stettler Agriplex, Heritage Room



## Advance Vote

**Thursday, October 12, 2017**  
**Friday, October 13, 2017**

Advance Voting Station open from 10:00 am - 8:00 pm, each day.  
Stettler Agriplex, Heritage Room, 4516 - 52 Street, Stettler AB

## Special Ballots

Voters who are unable to vote at an advance vote or at the voting station on election day because of physical incapacity, absence from local jurisdiction or being a returning officer, deputy returning officer, constable, candidate, official agent or scrutineer who may be located outside of their ward may apply to vote by mail-in ballot.

You can request a special ballot by filling out the prescribed form only available from the Returning Officer, Doreen Nixon. This request can be made anytime prior to Election Day and the Special Ballot must be received by the Returning Officer by 4:30 pm on October 13, 2017 to be considered. Contact the Returning Officer, Doreen Nixon at 403-579-2460 or on her cell phone 403-740-9546, email 2017countyelectionden@gmail.com or mail to Box 1338, Stettler, AB T0C 2L0.

## Incapacitated Voters

Election officials will attend the home of any elector who, due to physical incapacity, is unable to attend the voting station. This service will be offered only on Election Day and you can request this service by calling the Returning Officer (403-579-2460) anytime before the close of Election Day.



On September 1, Botha became a hamlet in the County of Stettler after a viability review was conducted by Municipal Affairs. Residents were invited to join County staff and Councillors on September 11 for an informational evening.

## THE NEW HAMLET BOTH A

On Monday, May 15 Botha residents sent a clear message to the Minister of Municipal Affairs voting for dissolution of their village when in a vote to stay or go, 91 per cent, or 52 out of 57 votes, chose Dissolution of the village of Botha to become a hamlet of the County of Stettler.

Following the vote, villagers waited for the Minister of Municipal Affairs to recommend to the Lieutenant Governor in Council and Cabinet, that the village be dissolved and to set a date of dissolution, which happened on July 12.

Botha's viability issues came to the forefront in 2015 when residents of the village presented a petition to Botha Council asking Municipal Affairs to investigate the viability of the village. The village Council went ahead and requested a viability review be undertaken. The process was slowed down by the Botha's struggles to hire a CAO, file their financial statements and fill a vacant council seat.

After the vote in May, Village of Botha Mayor Flo lskiw said, "I was excited, relieved, and gratified to see that an overwhelming majority of the residents of Botha voted to become a hamlet. Our council

believed this was the best option for our village, and now the residents have agreed that we can all move forward together."

Botha has been under contract to the County of Stettler for the provision of both administrative and utility services for the village. As of September 1, 2017, Botha will become a hamlet in the County of Stettler No. 6.

The County of Stettler would like to WELCOME Botha, and held an informational evening for residents on Monday, September 11. Questions were asked about bylaws, bylaw enforcement and how to pay utilities and taxes. A booklet was handed out which outlines the answers to many of Botha resident questions, and is now available on our website [www.stettlercounty.ca](http://www.stettlercounty.ca), or you can pick up a copy at the County of Stettler Administration Building, 6602-44 Avenue, Stettler.

At the September 13, 2017 regular council meeting, Council voted in favor of purchasing a sander box and snow plow for use on the County's existing F450, in order to service the new hamlet's roadways this winter.



HELP WANTED:

**FIREFIGHTERS**

**Station 3** in Donalda

403-742-4441

## FIREFIGHTERS WANTED - DONALDA STATION 3

The Stettler Regional Fire Department continues to seek volunteer firefighters in order to re-open Station 3 - Donalda. Station Three was temporarily suspended earlier this year due to an insufficient number of volunteer firefighters for the area.

They welcome new members and if you are interested in learning more about becoming a volunteer firefighter please call the County at 403-742-4441.





# INCREDIBLE DONATION FROM FESTIVAL OF LIGHTS

The Stettler Festival of Lights committee under the umbrella of the Stettler Health Services Foundation is proud to announce that funds have been approved for the Stettler District Ambulance Association (SDAA) to purchase one Lucas 3 Chest Compression System at a cost of \$14,000.00.

Ambulance staff will train on the equipment, participate in a 3 month trial and then the purchase will take place. With our communities increasing call volume, increased time on task, long rural responses and lack of available resources in our communities, this resource will provide SDAA with a progressive valuable tool to ensure our clients receive the best quality Cardio-Pulmonary Resuscitation (CPR) as possible.

The FOL Committee also has approved funding to purchase a Stryker Power Pro

Stretcher at a cost of \$16,500. This stretcher is a quality improvement initiative in which has proven to reduce worker's compensation costs, injuries, lost and modified workdays, while improving recruitment and retention due to lifting concerns.

The purchase of these two items will be funded through the annual 2017 Festival of Lights week long events that will occur in November/December in Stettler. This year is the 20th year of this event and over the course of 20 years \$949,856.00 has been raised to directly fund health care projects at the Stettler Health Care Centre. Future announcements for Health Care enhancements for this year's festival will be released over the next three months.

Thank you to the Stettler community for making these purchases possible.



# COUNTY OF STETTLER

## TWO LOCATIONS

The County now has two locations. The Administration Building is still operating from its original location, at 6602 – 44 Avenue, right between the Museum and Points West.

Hours of Operation are 8:30 a.m. - 4:30 p.m.

The new Public Works Shop is located at 19561 Township Road 38-4. You'll find it just south of the Town of Stettler on Highway 56. Hours of operation are 8:00 a.m. - 4:30 p.m. The two locations offer the following services:

### Administration Building

- Pay Bills
- Tax Inquiries and Payments
- Council Meetings
- Planning and Development Services
- Recreation Inquiries
- Bylaw Enforcement
- Mapping

### Public Works Facility

- Snow Plow/Laneway Grading Agreements
- Agricultural Services Rentals
- Strychnine Sales (Spring)
- Utility Emergencies
- Tenders and Bid Postings
- Road Maintenance Requests
- Parks and Maintenance Inquiries
- Engineering

Fire permits are issued at both locations.

As of June 1, 2017 the County of Stettler also introduced an automated telephone system. When you call the County at 403-742-4441 now, a message will prompt you on how to reach the department you are looking for.

Press 1 - For the Office, including administration, finance, tax and utility billings

Press 2 - For subdivision and development permitting - Planning & Development

Press 3 - For the Shop including roads, fleet and utilities, mowing and agricultural services

Press 0 - For general reception

# 2017

## STETTLE PHEASANT FESTIVAL

STETTLE, ALBERTA

OCTOBER 12TH - 15TH



*Hunting*



*Conservation*



*Learning*



FOR MORE INFORMATION PLEASE CONTACT THE STETTLE BOARD OF TRADE

(403) 742-3181 OR [info@stettlerboardoftrade.com](mailto:info@stettlerboardoftrade.com)

# PHEASANT FESTIVAL 2017 CALLING FOR VOLUNTEERS

The 2017 Canadian Badlands Pheasant Festival needs your help. Volunteers are needed for the event, October 12-15th for:

- Releasing birds
- Marshaling - ensuring hunters are on the proper land and following rules
- Catching birds
- Making packages
- Registering participants

For more information and to volunteer please contact the Stettler Board of Trade at 403-742-3181.



Councillors buried a Time Capsule to be opened in 50 years on Canada's bicentennial.



Ribbon cutting ceremony

# GRAND OPENING PUBLIC WORKS FACILITY

On Thursday, July 20, County staff were excited to host the grand opening of our new Public Works Facility south of the Town of Stettler.

Approximately 650 guests from the County of Stettler and surrounding area attended the ribbon cutting ceremony, BBQ lunch and were treated to tours of the new facility.

Reeve Wayne Nixon thanked everyone involved in the project and current council buried a time capsule at the site to be opened in 50 years on the occasion of Canada's bicentennial. It included a photo of the current council; a County flag, toque and pin; Canada 150 flag and pin; Canada 150 Coin set; a photo of the old County shop; County Connection magazine; current County map;

photos of the current equipment fleet; Stettler Independent newspaper edition July 20, 2017; information on the Canada 150 logo and design; list of County staff; current box office movies, music; and the cost of groceries and fuel.

Guests concluded their visit by planting a maple tree in the community grove directly east of the new facility on the berm. One hundred and fifty trees were planted to commemorate Canada's 150th birthday.

This facility was built using Municipal Sustainable Initiative grant funding, and reserves, enabling the County to build the facility without borrowing.



Visitors lined up for BBQ lunch and tours of the facility.



Visitors planted maple trees in the community grove at the new County site.



## Quick Facts

<b>Old Shop Site Combined Square Footage:</b>	<b>28,650 SF</b>
<b>New Facility Square Footage:</b>	<b>43,850 SF</b>
<b>Building Cost -</b>	<b>\$7,486,797</b>
<b>Cost per square foot -</b>	<b>\$170</b>
<b>Additional costs:</b>	
<b>Site Preparation -</b>	<b>\$1,474,000</b>
<b>Utilities during construction</b>	<b>\$239,203</b>
<b>PW Facility: Approximately \$750,000 under budget</b>	



2016 Photo Contest Grand Prize Photo - 'Aurora' by Jan Fooks

## 2017 Photo Contest IS ON!

Inviting all amateur photographers to submit up to three photos for our 2017 Photo Contest, on now until November 7. Deadline for submissions is Tuesday, November 7, 2017 at midnight.

By mid November, a panel of judges will assemble to choose their top 13 favorites, (12 months plus a cover) to be featured on our 2018 County Calendar. One of the 13 photos will be chosen as the Grand Prize Winner, and that photographer will be awarded an iPad mini. There will be prizes for all photographers who are featured in our calendar. This contest is open to everyone - including County staff and councillors. Photos must be taken in the County of Stettler - and will be verified, in order to be eligible for the grand prize.

For full contest details, or to upload your entries, visit [www.stettlercounty.ca](http://www.stettlercounty.ca).



# SNOWPLOWING - SIGN UP EARLY TO AVOID DELAYS

In central Alberta we can't escape the snow, or the fact that roads are going to be bad during and after a winter storm – but we always try to minimize the length of time our roads are in poor shape.

The County provides laneway snow removal free of charge on private property that provides access to permanent residence, only if the laneway is suitable for snowplowing. The County does not provide snowplowing services for driveways on private property situated in Hamlets or multi lot subdivisions. Deadline to sign up is Thanksgiving.

The management of snow plowing and road conditions falls on the shoulders of our County CAO, Assistant CAO and Directors, and is guided by policy set by County Council. County Council often discusses, debates and revisits the 'level of service' deemed appropriate, while maintaining financial responsibility to our ratepayers. In the County of Stettler, we have 2811 km of roads (1750 miles). We look after rural roads, not highways. Highways (#11, #12, #56 and secondary highways #835 and #601 for example) are serviced by Alberta Transportation.

Order of priority for snow plowing is: Airport first, this is cleared by one of our three plow trucks. Other hard surface roads including hamlets, subdivisions and main access roadways to subdivisions are also supported by our plow trucks. Graders plow our gravel roads and start in alternating locations plowing in a grid pattern of east and south, or west and north. Winging snow back from the shoulders

has second priority. Snowplowing is undertaken in a manner that minimizes backtracking and excessive road travel.

Laneways are often plowed in conjunction with gravel roads. However when we are unable to keep up with County road plowing, then laneways are cleared at a later date. **Laneways are only plowed after an application is made at the County of Stettler by signing a 'Hold Harmless' agreement EACH YEAR. The laneway then must be inspected for safety by the County and deemed 'accessible for snowplowing' EACH YEAR.** A 'Flag' is issued and displayed at the bottom of approved laneways once all of these steps have been completed. For insurance purposes, this entire process must be repeated every year, with a new flag being issued to indicate you have done so. Don't wait until the first snowfall to come in. Once snow starts to fly, our operators are busy plowing and will not be stopping this service to come and make inspections. Inspections are ongoing now, come in and get added to the list.

One final note of concern with laneway plowing is the safety of children/pedestrians. Operators are often plowing laneways in less than ideal conditions and in the dark. We need our residents to educate their children and visitors, as often it is very hard to see children, or they come out of a pile of snow that the grader may be heading for. Please keep close watch.



Buffalo Hills Beef Farm - a stop on the Agriculture Tour

## LOCAL PRODUCERS SHINE TASTE OF THE HEARTLAND

The Stettler Regional Board of Trade & Community Development along with support from the County of Stettler and Town of Stettler were host to the first long table dinner and Open Farm Days bus tour in the Stettler region with tremendous support from guests near and far.

Saturday, August 19, provincially acclaimed Open Farm Days, was filled with learning opportunities and new experiences.

The Open Farm Days Bus tour allowed participants to learn about various farms throughout the north west quadrant of the County of Stettler taking in Haustein's robotic dairy farm, EXL grain farm, Buffalo Hills Natural Beef and Fox's goat farm.

The busy day started with a filling pancake breakfast hosted by the County of Stettler. Information was

abundant as visitors learned about the farm, the passion of the owners and how technology has changed. Participants were surprised with a wagon tour through the rolling hills surrounding Buffalo Lake and an auctioneering demonstration at Buffalo Hills Natural Beef farm.

The evening was an opportunity to enjoy the camaraderie of neighbors and new friends as well as meet with local producers and taste what can be found in our own backyard at the Taste of the Heartland. Four central Alberta chefs pulled out all of the stops to provide a unique, delectable and fresh meal with all local produce- a truly local fine dining experience. Guests came from British Columbia, Saskatchewan, Red Deer, Lacombe, Drumheller, and Paintearth County to participate in the long table dinner.



Long Table Dinner, Main Street Stettler



Agriculture education began at breakfast

Sharing their skills at the Taste of the Heartland:  
 Brenda Brinson- Brenda's Cozy Café Stettler, AB  
 Rieley Kay- Cilantro & Chive Lacombe, AB  
 Jimin John- The Otherside Restaurant & Lounge  
 Stettler, AB  
 Lutz Kintzel- Red Deer, AB

Our producers provided a variety of ingredients to make the meals successful. Many of which can be found at local farmer's markets and even offer produce off their farm. These producers include Kempf's Greenhouse, Buffalo Hills Natural Beef, Canadian Heritage Meats, Primrose Farms, Applejack Ranch, Fireside Winery & Market Garden, and Hansen Distillery.

"I thoroughly enjoyed working with the other chefs, local producers and, of course, their fresh food. It was eye opening to see what was available in our

own backyard. I enjoyed the challenge of creating a dish with all different products that might not be plated together in a traditional dessert. I loved the opportunity to work directly with producers that I could continue to work with on a more regular basis. The Taste of the Heartland also gave me an opportunity to visit with the guests participating in this unique experience," added Chef Lutz Kintzel.

"The Taste of the Heartland and Open Farm Days V.I.P. bus tour began as a way to showcase the agriculture industry and our local producers in the Stettler region. We worked closely with the County of Stettler and Town of Stettler and together we were able to highlight what truly makes Stettler a great place to live, our entire community," said Stacey Benjamin, Executive Director, Stettler Regional Board of Trade & Community Development.



Graham Scott, Administrator for White Sands; Tim Fox, Manager for SMRWSC; Lorne Thurston, Mayor of the Summer Village of White Sands; Stephan Weninger, Stantec; and Pat Gorcak, Chairperson, SMRWSC at the Summer Village of White Sands Sod Turning.

## WATER FOR LIFE WHITE SANDS & BROWNFIELD

Residents, students, elected officials and members of the Shirley McClellan Regional Water Services Commission attended the Sod Turning Ceremonies at White Sands, Alberta and Brownfield, Alberta highlighting the beginning of the installation of the Rural Waterlines to those two communities.

The sod turning ceremonies were held to celebrate, recognize and thank Alberta Transportation for their commitment to providing *Water for Life* funding which enables SMRWSC to bring water to its member communities.

Extending the SMRWSC waterline to rural communities, brings SMRWSC one step

closer to realizing its goal of providing clean, safe, potable water to all of its member municipalities.

The Shirley McClellan Regional Water Services Commission consists of 14 member municipalities: County of Stettler No. 6, County of Paintearth, Special Areas Board, Town of Castor, Town of Coronation, Village of Bawlf, Village of Big Valley, Village of Consort, Village of Donalda, Village of Halkirk, Village of Rosalind, Village of Veteran, Summer Village of Rochon Sands and the Summer Village of White Sands.

Phase 1 of the commission's plan saw a 142 km pipeline taken to the communities



Brownfield school children joined Pat Gorcak, Chairperson, SMRWSC; Reeve George Glazier, County of Paintearth; Deputy Reeve Diane Elliot, County of Paintearth; Stephan Weninger, Stantec; and Tarolyn Aaserud, Administrator for the County of Paintearth celebrate the Brownfield Sod Turning.

of Halkirk, Castor, Veteran, Coronation and Consort as well as the Counties of Paintearth, Stettler and Special Areas 2, 3 and 4.

Phase 2 and Phase 3 of the commission's plans were completed in 2014, and brought water to the Villages of Big Valley and Donalda.

SMRWSC water is drawn from the Red Deer River and is treated at the Town of Stettler Water Treatment Facility.

***“We thank Alberta Transportation and their continued support, enabling SMRWSC to bring clean, safe drinking water to Albertans.”***  
***Pat Gorcek, Chairman for SMRWSC***

Thanks to *Water for Life* 90-10 funding, 2017 will see the beginning of Phase 4 and Phase 5, bringing water to the Summer Village of White Sands and to the hamlet of Brownfield, Alberta. That leaves the Villages of Rosalind, Bawlf and the Summer Village of Rochon Sands the last three members still requiring water.

SMRWSC is administered by the County of Stettler.



## URBAN ADDRESSING HAMLETS AND SUBDIVISIONS

In 2014 the County of Stettler No. 6 passed Bylaw 1532-14 requiring all residential and commercial properties within the County of Stettler display an address sign in order to assist emergency personnel in locating the correct property in the event of an emergency. The bylaw requires an urban style addressing system for some communities because the previous rural style addressing system created some confusion when it was applied to hamlets and multi-lot subdivisions. Since the adoption of the bylaw, County staff have been working with Telus, Emergency Management Services and the Alberta Municipal Data Sharing Partnership to change over to the urban style address system.

Please note: These changes will not affect your mailing address with Canada Post. Your mailing address with Canada Post will remain unchanged.

Due to the fact just about every town, village and hamlet in Alberta has a 'Main Street' and a 'Railway Avenue', it was required some of the similarly named streets in Erskine, Byemoor, Nevis and Red Willow be renamed to ensure emergency services are able to locate the correct property. As

a result, street names which appear in more than one community have been renamed by adding the community name as a suffix to the street name (ex. Main Street Erskine, Railway Avenue Byemoor, etc.). Over the course of the next few months, you may notice street name signs in your community changed to the new street names.

In some cases a discrepancy was found between the approved street name (either as shown on a registered plan of subdivision or approved by Council resolution) and the "local" street name. In order to clear up the confusion, all street names that appear on registered plans of subdivision are used as the default and where no such street names were previously approved, a new street name was assigned.

On this basis, a comprehensive street name database was prepared and presented to County Council and approved. As a result, many addresses have been updated to reflect the officially approved street name (ex. Lake Road in Erskine rather than Hwy 835, or Buffalo Drive in Scenic Sands rather than Twp Rd 40-2).



Considerable effort was taken to ensure lots within the hamlets and multi-lot subdivisions are assigned an address based on where the property gains vehicle access from the street. Where two or more lots with the same owner are tied together with a building, a single address has been assigned to the entire group of lots. By contrast, where two or more lots have been developed as a single yard site but are not tied together by a building, an address has been assigned to each individual lot.

Given all the above considerations, some existing addresses had to be changed entirely (i.e. both the house number and street name change), while others will only see partial changes (i.e. only the house number or only the street name will change). Many addresses will not change at all.

The County of Stettler No. 6 will endeavour to inform affected landowners of any address changes and the process of updating the blue reflective signs as quickly as possible. Please recognize this process may take several months to complete as these changes affect all of the hamlets and multi-lot subdivisions within the

County of Stettler. Pursuant to Bylaw 1532-14 the landowner is responsible to display and maintain the address assigned to their property.

Please note the County of Stettler cannot control when or if Global Positioning System (GPS) providers such as Google Maps, Garmin or Magellan update their systems to show the addresses in the County. The County will provide the correct addresses if approached by these companies.

If you have any questions and/or concerns regarding this matter, please feel free to contact the Planning and Development Department at 403-742-4441.



Atco Electric Award



Botha Youth Award



Stettler Ag Society Award



Stettler Dodge Award



Sullivan Lake Award

## CONGRATULATIONS 2017 AWARD WINNERS

The 40th Annual County of Stettler Community Service Awards were held at the Big Valley Jubilee Hall earlier this year. These awards recognize and honour community members and county residents for their outstanding contributions to recreation, culture, arts and service to their communities.

Over 140 people attended the evening which continues to grow in size and magnitude each year, as the recognition of volunteers is very important to the County of Stettler and residents. The awards are hosted by a different community each year as this gives the area an opportunity to highlight their unique community and all the great work they do.

The County of Stettler is happy to support this great event which will be hosted by the newest hamlet in the County, Botha, in 2018.

### **ATCO ELECTRIC ARTS CULTURE AND HERITAGE AWARD - Marlene Connibear**

Presented by John Pearson of Donalda Ag Society and Tracy Volker from ATCO Electric  
Darlene Tantrum accepted on behalf of winner Marlene Connibear

### **STETTLER DODGE COMMUNITY SERVICE AWARD - David and Tammy Webster**

Presented by Lorraine Hankins (representing Kelly Hicks, Dodge) & Abby Webster from Big Valley Ag Society

### **BIG VALLEY AGRICULTURAL SOCIETY COMMUNITY SERVICE AWARD - Raj and Doug Duncan**

Presented by Dan Webster of the Big Valley Ag Society and Marjorie Mann from the RBC branch-Stettler



Big Valley Award



Botha Lifetime Achievement Award



Donalda Ag Society Award



Endmoor Youth Award

#### **BOTHA COMMUNITY CENTRE LIFETIME ACHIEVEMENT - Josie Hunter**

Presented by Lee Dechaine of Botha Community Centre

#### **BOTHA COMMUNITY CENTRE YOUTH AWARD - Jennifer Hoekstra**

Presented by Lee Dechaine of Botha Community Centre, Chris Raab and Val Erickson from ATB Financial

#### **DONALDA AND DISTRICT AGRICULTURAL SOCIETY COMMUNITY SERVICE AWARD - Ron Borchuk**

Presented by Beth Fulton, Wyatt Fulton, and Rebecca Strause of Scotiabank

#### **ENDMOOR CULTURE AND RECREATION SOCIETY COMMUNITY SERVICE YOUTH AWARD - Rylee Jones**

Presented by Doreen Nixon of the Endmoor Culture and Recreation Society

#### **STETTLE AND DISTRICT AGRICULTURAL SOCIETY COMMUNITY SERVICE AWARD - Betty Ettinger**

Presented by Laurel Pole of the Stettler Ag Society and Dwayne Grover of Vision Credit Union  
Dale Chapman accepted on behalf of the winner Betty Ettinger

#### **SULLIVAN LAKE WEST AGRICULTURAL SOCIETY COMMUNITY SERVICE AWARD - Twila Buchwitz**

Presented by Bobbi Buchwitz, Sullivan Lake Agricultural Society and Sherry Marshall of TD Canada Trust

*A special thank you to our valued sponsors who make these awards possible: ATCO Electric; Stettler Dodge; County of Stettler Agricultural Services Board; Big Valley Agriculture Society; Scotiabank-Stettler; Vision Credit Union-Stettler; Royal Bank-Stettler; TD Canada Trust-Stettler; and ATB-Stettler.*

# 28



# FESTIVAL OF LIGHTS

**November 28 to December 2**

**Stettler Community Hall**

Open Noon to 5 pm Daily (Friday 10 am to 1 pm)

Tuesday - ATCO Pancake Breakfast 7-9 am (advanced tickets)

Tuesday - Christmas Spirits 7-9 pm \$30 (advanced tickets)

Wednesday - Seniors Tea 2-4 pm \$5 (tickets at the door)

Wednesday - Art & Cheer 7-9 pm \$35 (advanced tickets)

Thursday - A&W Family Night 5-8 pm (advanced tickets)

Friday - Holly Jolly Lunch 11:30 am-1 pm (tickets at the door \$10)

Friday - Children's Wonderland (Agridex) 1-5 pm

(tickets at the door \$2)

Saturday - Dinner & Gala starts at 5:30 pm \$65

**Tickets available at WISH Kitchen and Gift**



## Save a Tree

Sign up for e-versions of County Connection magazine by contacting [info@stettlercounty.ca](mailto:info@stettlercounty.ca) or by calling 403-742-4441. It's also available on our website at [www.stettlercounty.ca](http://www.stettlercounty.ca).

# DISCOVER YOUR ROOTS EXPLORE YOUR FAMILY TREE

The Stettler Genealogy Club will meet the first Thursday of each month at 6:30 PM at the Stettler Public Library located in the Stettler Recreation Centre at 6202-44 Avenue.

Beginner and experienced researchers welcome. For further information please contact David Guba at 403-742-8369, [dguba@telus.net](mailto:dguba@telus.net).

# COMMUNITY EVENTS



## Christmas Community Events

Stettler Town & Country Museum  
*Light the Night*

Opening Night - December 1

Continues Fridays & Saturdays until last week before Christmas - then will be open most of the week!

Stettler Ag Society Christmas Craft Fair

October 24

11:00 a.m. - 7:00 p.m.

Botha Christmas Craft Fair

November 4

10:00 a.m. - 3:00 p.m.

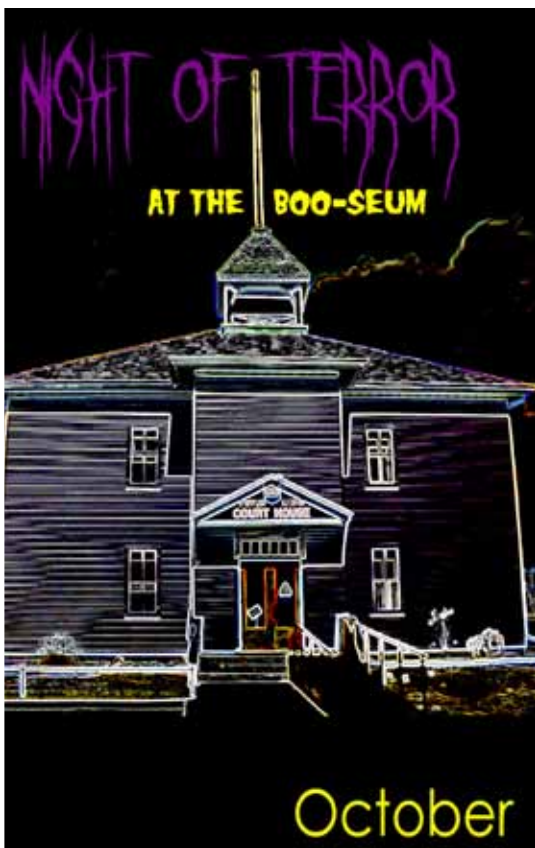
Botha Hall

Big Valley Christmas Craft Fair

November 18

10:00 a.m. - 3:00 p.m.

Big Valley Community Hall



## Night of Terror at the Boo-seum

Haunted House

Thurs. October 26 7:00-9:00 PM

Fri. October 27 7:00-11:00 PM

Sat. October 28 7:00-11:00 PM

## Byemoor Community 150th Celebration

Saturday, October 28, 2017

Byemoor Community Hall

## Red Willow Ag Society - FALL SUPPER

Friday, October 20, 2017

Red Willow Community Hall - 6:00 PM

RSVP - 403-742-3990

Catered Beef on a Bun with all the trimmings

\$15/plate (10 and under Free)

# COMMUNITY EVENTS

HATS Dinner Theatre

*Cookin' with Gus*

An adult comedy - November 15-18, 2017

Tickets at Wells Furniture : \$50 each (18+)

Donalda Fall Supper

Donalda Hall

October 28, 5:00-7:00 PM

\$15 for adults; \$10 for children 12 and under

Erskine Fall Supper

October 28, 2017

4:30 -7:30 PM

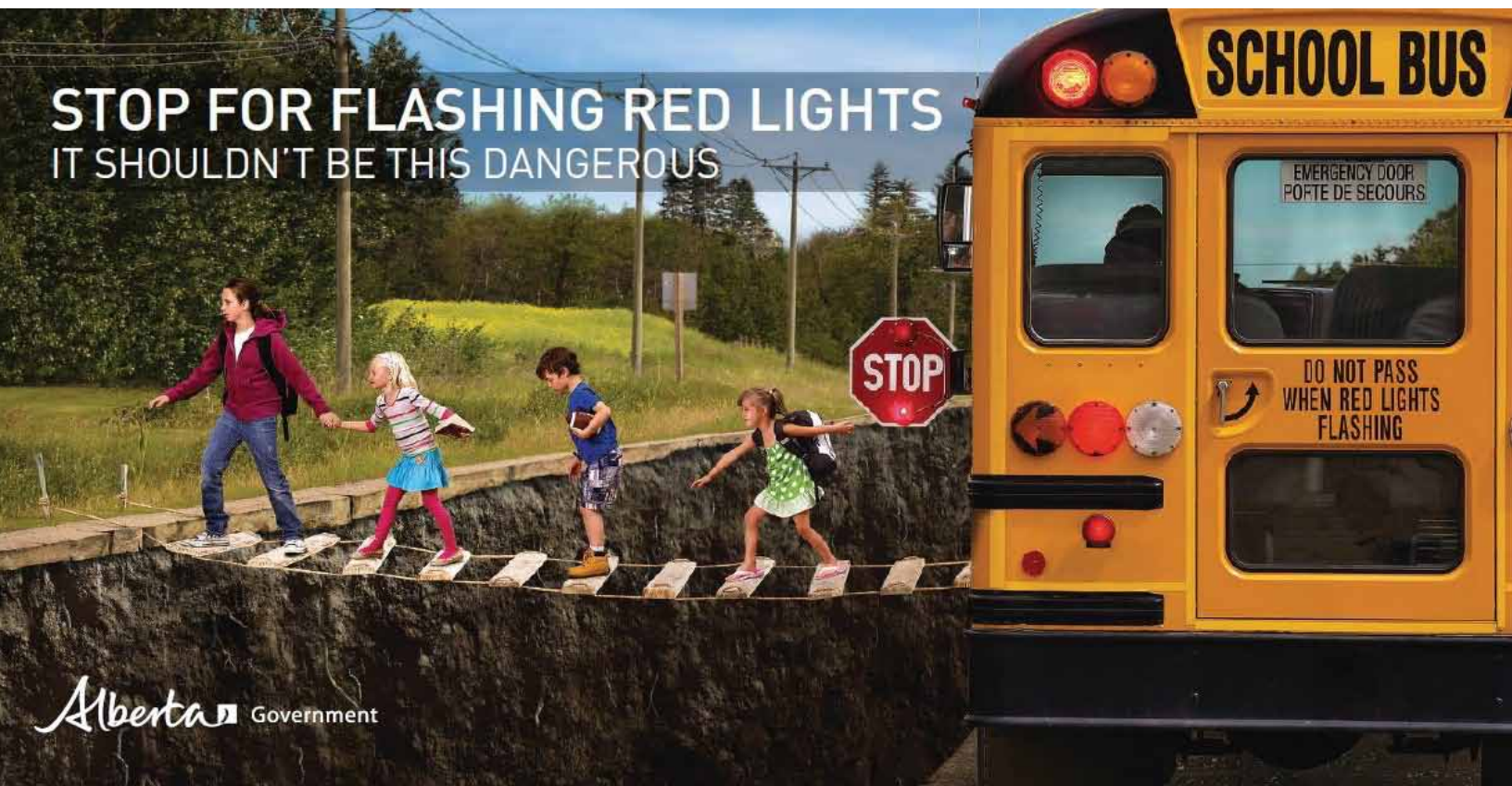
Erskine IOOF Hall

Linda Hall Fall Supper

Sunday, November 5

4:00-6:00 PM

**STOP FOR FLASHING RED LIGHTS**  
IT SHOULDN'T BE THIS DANGEROUS



Alberta Government



Public Mail Agreement #41398593  
Return Undeliverable Canadian Addresses to:  
County of Stettler No. 6  
Box 1270  
Stettler, AB T0C 2L0