

# Stettler County **Connection**

**STETTLER WASTE  
HOURS**

pg 25

**MEET YOUR NEW COUNCIL**

2017-2021

pg 6-12

**County**  
Brokers  
**Relief**  
Education  
Taxes pg 20

## County of Stettler No. 6 Holiday Hours

Closing at Noon: Friday, December 22/17

Re-Open: Tuesday, January 2, 2018  
8:30 a.m. - 4:30 p.m.



# TAX PENALTY REMINDER

## FEBRUARY 1, 2018

A Tax Penalty of 8% will be applied to all outstanding taxes owed to the County of Stettler, on February 1, 2018.

The County of Stettler will no longer be accepting VISA or MASTERCARD for tax payment due to the costs incurred by using these companies.

Options for Tax Payment are as follows:

- Interac\*
- Cash\*
- Cheque
- Online Banking
- Or payment can be made at most banking institutions.

- **Autopay Program (Tips)** – Tax Payments can be distributed over 12 months if you sign up for our Autopay Program. *Your 2017 Taxes must be paid in full, at a zero balance, and then you may register to begin Autopay for January 1, 2018, for the 2018 Tax Year. Payments will be automatically withdrawn from your bank account each month.*

\*Tax payments will continue to be collected at the County Administration Building - not at the new Public Works Facility.

### TELEBANKING

The County of Stettler No. 6 is implementing a new banking system where payments will be downloaded into our financial system directly from the bank. Through this process the payments for Taxes and Utilities need to be separate. When making your online payments for taxes and utilities you need to enter the following:

- Taxes: Use your Roll Number or Customer ID.
- Utilities: Use your Customer ID or Utility Account Number.



03

**HIDDEN HALLS**

And how you can rent them.

18

**BOAT AND DOCK STORAGE**

Reminder for Buffalo Lake users.

06

**MEET YOUR COUNCIL**

2017-2021

20

**COUNTY BROKERS RELIEF**

Refund from Provincial Government.

13

**ENHANCEMENTS**

Hydraulic lifts for SDAA stretchers.

22

**HAVE AN AED?**

Register it - save more lives.

14

**2017 PHOTO CONTEST**

Pick up a calendar while they last.

23

**REGIONAL RECREATION**

Your Board and what they do for you!

16

**STETTLE WASTE**

In partnership with Diabetes Canada.

24

**72 HOUR EMERGENCY KIT**

October storm was our gentle reminder.

17

**REGISTER TODAY**

Winter Stockman's Clinic/Well Workshop.

25

**STETTLE WASTE**

Quick cut out - Hours of Operation.

17

**SHELTERBELT PLANNING**

Order early and avoid disappointment.

26

**FINANCIAL YEAR END UPDATE**

County is right on target.



# COUNTY CONNECTION

## INTRO

Some exciting news to share. In the last issue I mentioned voter turnout in the County of Stettler has historically been under or around 30%, and I felt quite strongly that we, Stettler County residents, could do better. And we did!

I am thrilled to report that in our October municipal election, voter turn out was at 41%. This may still sound a little light still to some, however I really feel an effort was made and the numbers don't lie, reflecting a positive change was made. We now have begun a four year term with our new Council, in this great democracy that we live in. Something to celebrate this holiday season.

As we enter into mid-December, we want to remind everyone to have a safe holiday. Slow down and enjoy the ride. We have equipment and operators on the gravel roads, in our hamlets and the subdivisions, sometimes plowing, sometimes scratching ice and more than anything we want you and our operators to get where you're going safely each and every day you hit the road.

If you spot a problem in the County, please report it. Our ratepayer request line is open 24 hours a day, 7 days a week on our website at [www.stettlercounty.ca](http://www.stettlercounty.ca), click on 'Submit a Request'.

Wishing you all a safe and healthy holiday season.

Sincerely,

Niki Thorsteinsson  
Director of Communications

## Stettler County Connection

Winter 2017  
Volume 7 Issue 3

Editor-in-Chief  
Tim Fox

Managing Editor  
Niki Thorsteinsson

Printed by  
Kathy's Printing Service

All Rights reserved. Any reproduction of the contents without written authorization from the publisher is strictly prohibited. The publisher cannot be held responsible for any errors or omissions found within this newsmagazine, or for loss of, or damage to, unsolicited material submitted by readers.

Availability: Current Issues of County Connection can be obtained from the County of Stettler Administration Building while supplies last.

Subscription: County Connections is delivered free of charge to taxpayers, with exception to those who do not live in the Province of Alberta or have unsubscribed from our mailing list. If you wish to receive future copies, please make the request to the Managing Editor at [nthorsteinsson@stettlercounty.ca](mailto:nthorsteinsson@stettlercounty.ca). You may also view the current and back issues of the County Connection on our website at [www.stettlercounty.ca](http://www.stettlercounty.ca).





# HIDDEN HALLS OF STETTLER COUNTY

As you will see throughout all the photographs in this issue, Stettler County has some spectacular scenery and some very beautiful back country to explore.

We also have several community halls, of all shapes and sizes to consider for your weddings, anniversary celebrations, social gatherings, family reunions and more. You will find these halls hidden throughout the picturesque countryside, and within the close-knit communities which make Stettler County so unique. Keep them in mind next time you are seeking a location for your event.

## **Halls with over a '100 person capacity'**

Botha Community Hall	403-742-4811
Linda Hall	403-742-4761
Stettler Community Hall	403-742-4411
Gadsby Community Hall	403-740-3097
Westwoods Agrilot	403-574-3761
Rochon Sands Hall	403-742-4717
Nevis Community Hall	403-742-6552
Red Willow Community Hall	403-741-5270
Byemoor Community Hall	403-579-2460
Big Valley Jubilee Hall	403-876-2613
Donalda Community Hall	403-883-2891
Erskine IOOF Hall	403-742-0278
Endiang Community Hall	403-579-2288

## **Smaller halls (less than 100 person capacity)**

Fenn Hall	403-742-7767
Union Hall	403-742-0929
Pilot Knob Hall	403-742-4243
Big Valley Legion Hall	403-876-2097



CAO - Tim Fox

## WELCOME TO THE NEW TERM

We would like to welcome and introduce Stettler County to our Council for the new term, October 2017-October 2021.

Following our municipal election on October 16, 2017, we welcomed back five councillors: Ernie Gendre, Dave Grover, James Nibourg, Wayne Nixon and Les Stulberg, plus two new members: Larry Clarke and Cheri Neitz.

This new group had to hit the ground running. The first order of business was a Joint Regional Council Orientation held in partnership with Town Council with Village Councils attending as well. This orientation fulfilled the requirements as set out in the Municipal Government Act for educating and informing councillors. They also received presentations and information about our Regional Joint Services which include Stettler District Ambulance; Disaster Services; Family

and Community Social Support Services; Stettler Regional Library; County of Stettler Housing Authority; Stettler Waste Management Authority; Stettler Regional Fire Authority; Stettler Regional Board of Trade; Regional Water; and Stettler Handibus Society. This represented a crash course in how we all work together and are tied together through these joint services which council members will have the opportunity to influence and make decisions for and with.

The second order of business was our own Organizational Meeting held on October 30. Council elected a Reeve, which they do annually for a 1-year term. Our Reeve for 2017-2018 is Larry Clarke. You will hear from Reeve Clarke later in this issue in his introduction and then in subsequent issues in his 'Reeve's Ramblings'. Councillors also nominated each other to sit on the various boards and committees our County is



Council Back Row (l-r): Les Stulberg, Wayne Nixon, Cheri Neitz, Ernie Gendre  
Front Row(l-r): Dave Grover, Larry Clarke and James Nibourg

associated with. on the following pages you can see the individual councillors committee lists for the year ahead.

Over the past month, our council members attended the Alberta Association of Municipal Districts and Counties (AAMDC) Fall Conference in Edmonton, took part in some more councillor training from Municipal Affairs in the form of Elected Officials Education Program, and held their first Council Meeting, Agricultural Services Board Meeting and Municipal Planning Commission Meeting as a group.

They are working hard for our County already. Looking forward, Council's next task will be to establish a new Strategic Plan which will drive decision-making and priorities for Stettler County moving forward.

We have also begun budget discussions. The budget decisions will rely heavily upon the direction Council provides us with in their Strategic Plan.

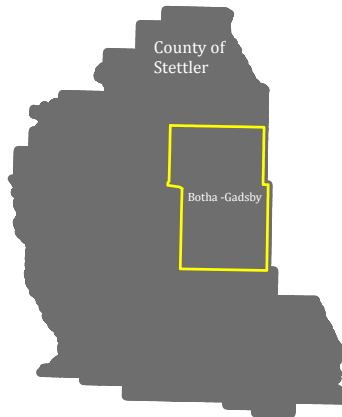
We look forward to presenting you with some opportunities to provide input and feedback on our budget priorities and projects in the new year. Stay tuned.

Tim Fox, CAO for the County of Stettler

## Committees

# 6

- Agricultural Services Board
- Municipal Planning Commission
- County of Stettler Assessment Review Board
- Central Alberta Association of Municipal Districts and Counties
- County of Stettler Disaster Services Committee
- Inter-municipal Development Plan Committee with Villages and Summer Villages
- Physician Recruitment and Retention Committee
- Shirley McClellan Regional Water Services Commission
- Stettler Regional Fire Department Committee
- Policy and Procedure Committee



## LARRY CLARKE - REEVE BOTHA-GADSBY

My wife Sheila and I live in the Gadsby/Botha area and are proud to have raised our four daughters in the region and through the school systems. I am the 4<sup>th</sup> generation of my family to call this area home.

I worked 32 years for a major oil company and was fortunate to be based out of the Town and County of Stettler for 18 years and commuted for the balance with always being here.

I wore two hats for years working and farming but have been retired for two years which has allowed me the time to focus on the farm with my father, and is allowing me the time to pursue

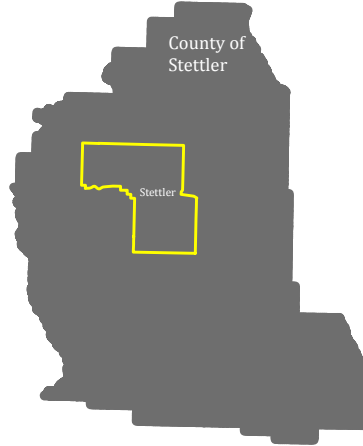
other interests such as serving the rate payers of Ward 3 as their representative on County Council.

I was a founding director and Chairman of the Gadsby Water Cooperative for 20+ years and feel this, along with my business and farming background, will help me contribute to the successful operation of the County of Stettler with my fellow councillors.

I would like to thank the residents of the Botha/Gadsby area for allowing me to be your voice and look forward to representing you for the term.

## Committees

- Agricultural Services Board
- Municipal Planning Commission
- County of Stettler Assessment Review Board
- County of Stettler Disaster Services
- Stettler Inter-Municipal Development Plan Joint Committee



7



# ERNIE GENDRE STETTLER

It is my pleasure to once again serve you as the County of Stettler Ward 4 Councillor, and assist in our community's advancement with regards to issues that span from the seemingly mundane to the very complex.

Politics can be very interesting, this is an understatement depending on the perspective of the individuals view and how it is perceived by others. Thankfully we live in a democracy where majority rules, but we also have to represent everyone.

During my 30+ years as a business owner and operator I have learned to take responsibility of those issues I have been entrusted with, and complete them to my customers' satisfaction.

To do so required listening and being accountable. It is no different being on Council, where policies and procedures provide guidance for the Councillors in the performance of their duties.

However, as issues and projects come up, each Councillor must determine whether these policies and procedures are in fact guiding and assisting our community to the goals that are desired. To that end there must be a constant communication with those we represent - a form of constant negotiations whereby one is always ready to accommodate their needs.

While these challenges may be somewhat daunting, I respect the trust you have placed in me. There is always room for improvement. Therefore, I will continue to obtain information from anyone and everyone, for the benefit of everyone in our County.

My promise to you is that I will be constant in my vigil of fiscal responsibility, and never take your hard earned taxes for granted.

I am always available for conversation and welcome calls from my constituents.

## Committees

8

- Agricultural Services Board – Chairperson
- Municipal Planning Commission
- Battle River Research Group
- County of Stettler Disaster Services Committee
- County of Stettler Housing Authority
- Physician Recruitment and Retention Committee
- Red Deer River Municipal Users Group
- Shared Use Recreation Fields Committee
- Stettler Seed Cleaning Plant No. 1



# DAVE GROVER BIG VALLEY

I was born and raised in this great County of ours. My ancestors on both sides pioneered and homesteaded the area and my grandchildren are the 6<sup>th</sup> generation of the Walker/Grover/Nelson families to enjoy doing so. I am very proud of my heritage and my wife Lorraine and I chose to return to the County to raise and educate our family of four children - Brad, Jolene, Bobbi-Jo and Jamie, and it was certainly the best decision we ever made!

We consider ourselves very fortunate to continue to raise cattle, live, work and play in the County of Stettler with our family. We have enjoyed this rural life and I appreciate the opportunity to ensure future generations may also continue to be proud to live and work here.

I have had the privilege of serving as County Councillor for Ward 2 in the past, sitting on numerous Boards and Committees and I am very pleased to return to the Council table to

continue giving back to the communities that have provided my families with a good life, and again be the voice for my friends and neighbors in the Big Valley/Linda Hall area.

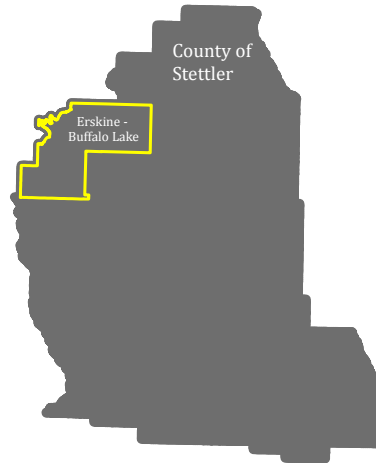
I am currently Chairperson for the Agricultural Services Board and sit on the Municipal Planning Commission, Battler River Research Group, Disaster Services, Housing Authority, Physician Recruitment, Red Deer River Municipal Users Group, Shared Use Recreation Fields Committee and the Stettler Seed Cleaning Plant.

I feel we have a wide variety of opinions and personalities on our present Council which should make for a very productive and forward-thinking group and I look forward to working together for the next four years. I also feel we are all passionate about the County of Stettler remaining a place where future generations are as proud to live, work, play and be from as we are.



## Committees

- Agricultural Services Board
- Municipal Planning Commission
- Buffalo Lake Intermunicipal Development Plan Steering Committee
- Buffalo Lake South Shore Intermunicipal Development Plan Steering Committee
- Buffalo Lake Management Team
- Rural Crime Prevention
- Stettler and District Ambulance Association
- Stettler Regional Fire Department Advisory Committee
- Stettler Waste Management Authority
- Policy and Procedure Committee



9

# CHERI NEITZ ERSKINE-BUFFALO LAKE

Erskine-Buffalo Lake is a beautiful place my family and I have called home for the past 17 years. My husband Guy and I chose to move back to the Erskine area 24 years ago and raised our 3 children Ty, Kylie and Shayla while farming and ranching.

Our family favorite past times have been football (my husband has coached high school Wildcat football for the past 25 seasons), rodeo, supporting our children in their sports, arts, missions, schooling including post secondary and many volunteering adventures.

Living and working in this community has given our children an opportunity to learn, grow and achieve their best. They attended school in

Erskine and high school at Wm. E. Hay, then continued on to post secondary.

For the past 10 years I have served as Clearview Public School Board Trustee representing Erskine, Donalda and NW Stettler families with the last three years as board chair. Upon completing my last term as trustee I had a desire to continue to work with my community and chose to run for County Council.

I am truly honoured to be able to serve my county and to represent your voice.

## Committees

# 10

- Agricultural Services Board
- Municipal Planning Commission - Chairperson
- County of Stettler Assessment Review Board
- County of Stettler Disaster Services Committee
- County of Stettler Housing Authority- Vice Chairperson
- Stettler and District Family and Community Support Services (FCSS)
- Stettler Health Services Foundation/Stettler Hospital Facility
- Stettler Inter-Municipal Development Plan Joint Committee
- Policy and Procedure Committee
- Stettler Airport Committee
- Alberta Seniors Communities & Housing Association - Vice Chairperson



# JAMES NIBOURG ERSKINE SOUTH-WARDEN

Well here we go again! I would like to thank everyone in my Ward for the opportunity to serve you for another four years. I hope to live up to your expectations. I have enjoyed the last seven years serving the ratepayers of Ward 5 Erskine South-Warden.

Wow time flies when your having fun. I have learned many things along the way but most of all, that we live in the best County in Alberta. (I actually already knew that, it was just confirmed by my time on council). We still have our problems but nothing we cannot handle if we work together. I do look forward to meeting those challenges along with my fellow Councillors, if we work as a team there is no challenge we cannot overcome. Every member of a team should bring a different talent. I feel we have that diverse talent to meet that challenge head on.

My lovely wife Lori-Anne is a Registered Nurse working in Stettler. We have raised our four wonderful children in the Erskine area. We could not have asked for a better place to work live and play. The community that we live in is truly the heart of Alberta. Life has a way of moving on, this

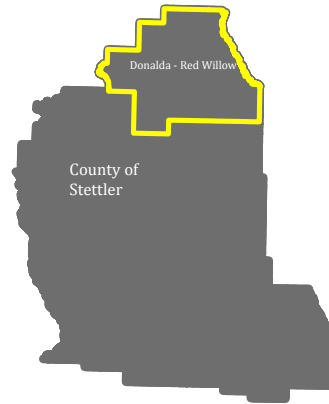
year we welcomed our first grand baby. I still think we are way too young to be grand parents but that is how life is meant to be.

I was born and raised in the Erskine area. I learned to get along with others as I was the youngest of eight, and there was lots of discussion and okay arguing along the way. We did learn respect is important and that strong sense of volunteering is great because a community is what you make it. After graduating from high school in Stettler I moved away to follow work in small towns all around Alberta, always comparing them to the Stettler area. Nineteen years ago we moved back home. Now we live just south of Erskine, raising purebred sheep, chickens and spoiling our grand baby when we get the chance. I have now owned and operated East Central Auto Recyclers for the last fifteen years. My many experiences with different volunteer groups and businesses have given me the tools and talents (I hope) to meet the challenges of being your County voice at the table for the next four years. Please do not hesitate to contact me and let me know what you are thinking. I truly look forward to serving you again.

## Committees

- Agricultural Services Board
- Municipal Planning Commission
- Rural Crime Prevention
- Stettler District Ambulance Association
- Stettler Town and Country Museum
- Stettler Waste Management Authority

11



# WAYNE NIXON DONALDA-RED WILLOW

My name is Wayne Nixon and I have had the privilege of representing the ratepayers of the County of Stettler and more specifically the ratepayers of the Red Willow/Donalda Ward for the past ten years. This has for the most part been a rewarding experience and I am grateful for the opportunity. My thanks go out to the ratepayers who have had confidence in me and have urged me to continue representing them. I would also like to thank the administration and staff and fellow councillors who have helped me understand the world of municipal politics.

I was born and raised in the County of Stettler and with the exception of a few years for secondary education, I have lived all my life in the county. I lived and worked in various parts of the county before about settling down at our present location in the Red Willow/Donalda area and establishing a dairy. My wife Loree and I are

fortunate to have raised our children in a farm environment and we are pleased that some of our grandchildren also have that privilege. We now however, are victims of “empty nest syndrome” but do not live too far from our children, grandchildren and great grandchildren.

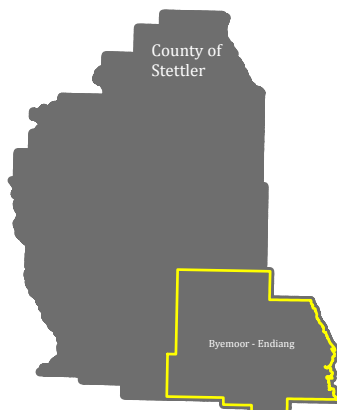
I presently work with one of my sons who is a grain and hay farmer. He farms about 4500 acres of crop land and about 1000 acres of hay land so I can stay as busy as I want between council duties.

I look forward to the new term and look forward to do my part in keeping the County of Stettler a progressive and innovative county.

## Committees

# 12

- Agricultural Services Board – Vice Chairperson
- Municipal Planning Commission – Vice Chairperson
- County of Stettler Assessment Review Board
- Parkland Regional Library Board
- Stettler Public Library Board
- Recreation – County of Stettler
- Stettler and District Family and Community Support Services (FCSS) - Chairperson



# LES STULBERG BYEMOOR-ENDIANG

Hi, I'm Les Stulberg and this is my third term on Council. I'm truly honoured to represent the Byemoor – Endiang Ward once again.

All my life I've been proud to call the Endmoor community and County of Stettler home. I've always been an active community volunteer and I look at my work as a councillor as an extension of that role.

I believe we are very fortunate to live where we do in this world – sometimes we take all we have here for granted. My goal is to continue to make our County a great place to live, raise families and do business. This is easily achieved when a Council works together and pulls in the same direction with that common goal in mind. There undoubtedly will be challenges but with positive-thinking leadership these can be overcome. If in any small way I can contribute to the betterment of the County for its residents to benefit, that would be the ultimate reward for me.

I enjoy the rural way of life and have farmed and ranched my whole life with my family northeast of Endiang. My wife Rosemary and I raised two sons here and they live not far away, in Stettler.

Our younger son and his wife are soon to bless us with our first grandchild in the New Year, something we are certainly looking forward to.

Besides country life, my wife and I enjoy travel, spending time with family and friends, gardening and country music and take in concerts when we can.

In addition, my interests also include photography, good cattle, local history, doing a little writing and reading a good book.

I am sincerely looking forward to working with the new Council and the County Administration to try our best to have a positive impact for all County residents from Buffalo Lake to Sullivan Lake and from the Red Deer River to the Battle River and all places in between. With the support of all residents and councillors the opportunities and possibilities are endless.

On behalf of myself, my wife and family I would like to wish everyone a safe, healthy and wonderful Christmas season with your families. May 2018 bring good health and happiness your way.



13

Left to Right: Crystal Lawrence-Piggott ACP, Mark Ratch ACP Supervisor, Rochelle Carpentier ACP & Leisha Hansel PCP

# STETTLE AMBULANCE ENHANCEMENTS

More than 350 Alberta Health Services ambulances in communities across Alberta will be outfitted with stretchers that use hydraulic lifts, the province announced in June 2017. The new equipment will be standard issue in all new AHS ground ambulances. This 20 million dollar price tag does not apply to contract providers for AHS – such as the Stettler District Ambulance Association (SDAA).

With generous donations from our community this year, we are happy to announce Stettler District Ambulance can align with this AHS and SDAA initiative and make this equipment a standard issue on our ambulances as well.

These lifts can safely handle up to 317 kilograms (700 pounds). Front line paramedics know all too well the risk of injury from repeatedly lifting patients in and out of ambulances, this action alone is one of the leading causes of debilitating injuries to EMS professionals.

Stettler District Ambulance would like to acknowledge how grateful and fortunate we are

to have such an invested community in regards to emergency medical services in our communities. Without generous donations we would not be leaders in EMS in our province. We are one of a very few that have a certain caliber of equipment to better enhance patient and practitioner care and safety. This would include LUCAS chest compression units, ventilators, and now our hydraulic stretcher power lift systems.

Jeff Matsuda, Advanced Care Paramedic with Stettler District Ambulance Association with 27 years of experience, recently utilized our new LUCAS Chest Compression unit donated by the Stettler Hospital Foundation. "This is a great system, it took away a lot of work load during CPR, which enabled us to focus even more on patient care knowing efficient chest compressions were being delivered."

Thank you to our community...we would not be where we are today without the continued interest in emergency medical services in Stettler.



Photo by Theresa Tanner



Photo by Valerie Mappin



Photo by Brenda Meyer



Photo by Theresa Tanner



GRAND PRIZE PHOTO

Photo by Alice Visscher



Photo by Lisa Tait

## PHOTO CONTEST & CALENDAR

We are pleased to congratulate the winners of our 2017 County Photo Contest. All of the photos you see here will be featured in our 2018 Calendar - which is now available for pick up at the County of Stettler. (Please note holiday hours on front inside cover of this issue).

Each year our judges have their work cut out for them as they search through the many entries in our annual photo contest and choose the

finalists. This year, the photo of the *SHEEP* by Alice Vischer took the Grand Prize iPad Mini! Congratulations Alice!

Please feel free to drop by the County Monday-Friday 8:30 a.m. - 4:30 p.m. and pick up a copy of our County calendar to display the beautiful sites of Stettler County throughout the coming year.



Photo by Darren Benson

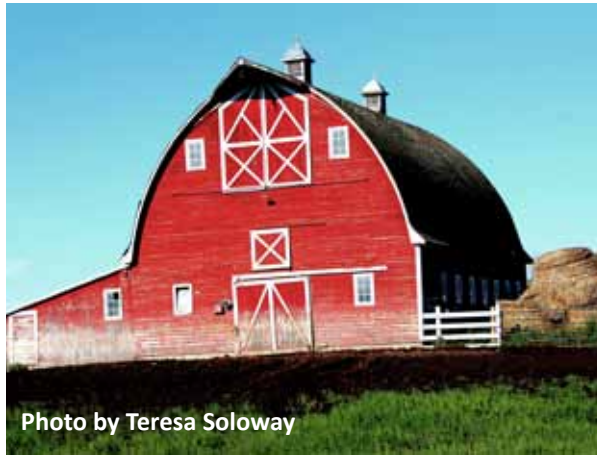


Photo by Teresa Soloway



Photo by Jennifer Shuffler



Photo by Alice Visscher



Photo by Heather Derrick



Photo by Kristi Devita



Photo by Alma Keen



Photo by Jo Ann Comeau Mitio

# 16

## Textile recycling includes:

- clothes
- gently-used shoes and boots
- bedding
- sleeping bags
- towels
- purses and accessories
- fabric curtains
- stuffed animals



# STETTLER WASTE PARTNERS WITH DIABETES CANADA

Stettler Waste has partnered with Diabetes Canada to reduce even more waste from entering our landfill while helping raise needed funds for a good cause. You can now recycle your TEXTILES in the BLUE Diabetes Containers found at the following Transfer Stations:

- Stettler Transfer Site
- Botha Transfer Site
- Big Valley Transfer Site
- Byemoor Transfer Site (in place Spring 2018)
- Donalda Transfer Site and Donalda Curling Rink
- Erskine Transfer Site
- Gadsby Transfer Site
- White Sands Transfer Site
- Stettler Regional Landfill

## **Diabetes Canada sells these items to Value Village as a fundraiser that enables the following programs:**

- Funding research: \$5 million annually, education, advocacy and D-Camp programs.
- Supporting over 11 million Canadians affected by diabetes (31% of Canadians).
- Operating 12 medically-supervised camps in Canada for children with Type 1 Diabetes.
- Diverting more than 100 million lbs from landfills each year.

# REGISTER TODAY!

## Winter Stockmans' Clinic

February 8, 2018

9:00am - 3:00pm

Stettler Agriculture Society Pavilion  
4516 52 St, Stettler, AB

Join the County of Stettler and the Battle River Research Group for an informative day on: Year-round Watering, Winter Feeding Systems & Costs, Producer Perspective on Winter Feeding Systems, Ducks Unlimited Programs and Riparian Health. Plus an update on Antimicrobial Regulation changes! It will be a day you won't want to miss!

Barry Yaremco - Nutrition, Winter Feeding and Costs Associated  
Jason Wright - Cap Solar - Year-Round Watering Systems  
Elgar Grinde - Producer Experience with Winter Feeding/Watering  
Bob Thomson - Ducks Unlimited - Programs & Riparian Health  
Ben Schultz - Maverick Large Animal - Update on Antimicrobial Regulation Changes

Cost: \$20 (Includes Lunch)

To Register:

[www.battleriverresearch.com/coming-events](http://www.battleriverresearch.com/coming-events)

780-582-7308



Battle River  
Research Group

Alberta  
Government

## WATER WELL MANAGEMENT FOR WELL OWNERS

→ JOIN US AT A WORKING WELL WORKSHOP

HOSTED BY: Battle River Research Group & County of Stettler

DATE: February 20, 2018

LOCATION: Stettler County Office

START TIME: TBA

PLEASE CALL OR EMAIL TO PRE-REGISTER:  
780-582-7308 or [events@battleriverresearch.com](mailto:events@battleriverresearch.com)

WORKING  
WELL  
Clean water.  
Well protected.

# GO GREEN THIS MAY - PLANT SOME TREES

It is that time of year again, we are preparing to take orders for the 2018 spring tree planting season. We will be offering the same Shelterbelt Program as last year, and are very pleased to be using Tree Time as our supplier once again.

Again this year, we are taking orders earlier in order to ensure trees are available and we receive the best pricing available. At that point we will ask you to come pay for your trees (before they arrive). We are accepting orders as soon as January 2, and a late fee of 15% will be applied to all orders placed after March 16. We will not accept any orders after Friday, April 27. We pay the freight on all orders placed through the County of Stettler.

We also offer a 'planting service' if you order more than 200 trees for a new shelterbelt row. You will

need to provide a tractor and a driver, and we will provide a planting machine along with the labour. We also have a plastic mulch applicator free for you to use, you just need to purchase the plastic mulch. The addition of plastic mulch to your shelterbelt tree planting provides your trees with the best possible opportunity for growth.

If you have questions about our services, or would like assistance planning a shelterbelt we would be very pleased to help. Contact Agricultural Services at 403-742-4441. For order forms or additional information about the County of Stettler's Shelterbelt Program, visit [www.stettlercounty.ca](http://www.stettlercounty.ca) and click on 'Agriculture' then 'Shelterbelt Planting Program'.



# BOAT & DOCK STORAGE AT BUFFALO LAKE

At present, the placement of a temporary, non-commercial structure (e.g. private dock and boatlift) in Buffalo Lake is permitted as outlined in the provincial Public Lands Act, the Water Act and the Buffalo Lake Integrated Shoreline Management Plan. This means that these structures are not subject to special regulation and are deemed a riparian owner's right.

The provincial government is in the process of drafting a template mooring policy that will be enforced in all summer villages and lakefront subdivisions. In this context, the County of Stettler in consultation with the Summer Villages of Rochon Sands and White Sands are preparing a shoreline management plan.

The Buffalo Lake South Shore Intermunicipal Development Plan steering committee and Buffalo Lake landowners have been in consultation on the development of the shoreline management plan for more than a year. Pending the declaration of boating regulations by the provincial government, the shoreline management plan has been put on hold.

## WINTER STORAGE OF BOAT LIFTS AND DOCKS AT BUFFALO LAKE

Community consultation identified interim policy for the winter storage of boatlifts and docks as a matter that requires immediate attention. As a result, in September 2016 County Council passed bylaws enabling ratepayers under specific circumstances to store private boatlifts and

docks on environmental reserve lands adjacent to Buffalo Lake. The approval of a development permit application to store boatlifts and docks is a function of the Municipal Planning Commission, and the following conditions must be met:

- 1) The storage is for boatlifts and docks only - no boat houses, sheds, boats or any other item or structure; and
- 2) The storage will be allowed only if a community association or an individual landowner can demonstrate to the satisfaction of the Development Authority that they have no other feasible options available for the storage of boatlifts and docks; and
- 3) The storage of boatlifts and docks shall not impede or obstruct pedestrian access or thoroughfare on the Reserve Lands; and
- 4) The storage is allowed only for the time period from the Labour Day long weekend in September of each year to the Victoria Day long weekend in May of each year; and
- 5) The use of the Reserve Lands for storage purposes requires the prior issuance of a development permit upon application by a community association or an individual landowner, which shall require as a condition of approval that the applicant enter into and keep in good standing a license agreement with the County for an initial term not exceeding three years and including a clause to indemnify the County of liability, a clause requiring written proof from the applicant



of comprehensive third-party liability insurance coverage of the applicant and the County and a clause that the license agreement may not be assigned.

The following reserve lands were identified for the purpose of winter storage:

**Scenic Sands subdivision**

Lot 70ER, Block 1, Plan 8222364

**Abbey Road subdivision**

Lot 8ER, Block 1, Plan 0223438

**Buffalo Sands subdivision**

Lot 102ER, Block 2, Plan 0522242

**Buffalo Lake Meadows subdivision**

Lot 10ER, Block 1, Plan 0521511

**Rochon Sands subdivision**

Lot 27ER, Block 6, Plan 1524494

**Bolin subdivision**

Lot 17ER, Block 8, Plan 1524957

**Buffalo View Estates subdivision**

Lot 29ER, Block 2, Plan 0620307 and  
Lot 64ER, Block 2, Plan 0720960

These lots are all Environmental Reserve parcels. The County may also consider entering into a license of occupation with a community association to store boatlifts and docks on a Municipal Reserve parcel, for example the Buffalo Lake Meadows Owners' Association or Dock Owners' Association.

Please note that the bylaw accommodates only those people who can demonstrate they have no alternative winter storage options. In addition, the intent is to tuck the boatlifts and docks under the trees along the shoreline. These bylaws do not authorize or imply the removal of trees or other natural vegetation for storing the boatlifts and docks.

The development permit will be for a discretionary use, which means it will be advertised and a notification sent to adjacent landowners, who may appeal the decision.

All community associations were provided with a template development permit application form and a license of occupation agreement. These are also available at the County Administration building. Landowners may apply individually as well. For further information, please contact the County's Planning & Development Department at 403-742-4441.

The use and improvement of the public boat launch at Buffalo View Estates is a subject for further study, consultation and policy development as part of the shoreline management plan. At present, this boat launch is operational and has limited parking spaces available. As part of the shoreline management plan, the County will assess the need for and viability of providing for additional parking in close proximity. The use of the boat launch channel for mooring of boats is another topic that will be addressed in the shoreline management plan.



## COUNTY PLAYS KEY ROLL BROKERING RELIEF

The County of Stettler played a key roll in brokering relief for Alberta Municipalities - leading to the Alberta Government now refunding uncollectable education property taxes on abandoned oil and gas properties.

County of Stettler staff and Council let out a collective cheer on November 15, 2017 when the Alberta government announced tax relief would be coming for municipalities who have had to pay the Alberta Government education property taxes on abandoned oil and gas properties.

The Provincial Education Requisition Credit (PERC) program will be retroactive to 2015 when oil prices began to fall and companies abandoned properties and defaulted on tax payments.

The County of Stettler brought this issue forward at the Alberta Association of Municipal Districts

and Counties (AAMDC) Convention in 2016, and to the attention of the then Minister of Municipal Affairs Danielle Larivee.

On August 20, 2016, Kim Trynacity from CBC Edmonton called us, interviewed us and reported on this issue and brought it to the public's attention. Council raised the issue again at the spring 2017 AAMDC conference, and in a meeting with Minister Shaye Anderson at the same time. In July of 2017 we wrote to Minister Anderson, again requesting action on this issue. At the same time, the County of Stettler contacted 67 municipalities in Alberta in a letter writing campaign, asking for their support.

"We asked and received support from several municipalities in Alberta who also wrote letters to Municipal Affairs about uncollectable education property taxes in their municipalities. Some not hit



quite as hard as us, and some hit much harder,” said Tim Fox, CAO for the County of Stettler.

“From 2013-2016 the County of Stettler’s major oil and gas delinquencies totaled \$260,882.28 in uncollectable education taxes,” added Fox. The County is facing further predicted losses in the range of \$175,000.00 in 2017 as we prepare education tax remittances for the province.

“Our County and ultimately our ratepayers are already carrying the burden of uncollectable property taxes for the oil and gas sector in the amount of \$1,033,697.93 between 2013 and 2016, with further predicted losses of \$707,899.78 for 2017. Having to pay the Provincial Government the education tax remittance which we were unable to collect on their behalf, was just adding insult to injury,” said Fox.

With the announcement from the Alberta Government of the new PERC program, the County of Stettler will be able to apply for credit for education property tax remitted to the Provincial Government between the years 2015 and 2017 for oil and gas properties that have had their municipal taxes written off.

The County is currently preparing the paperwork which will determine exactly what we are eligible to apply for.

“This is a really big deal for Alberta municipalities, and while we may be small, together we were heard. This is an excellent example of how collaboration works, and how our small municipal governments and politicians can make positive change when we join forces, focus, and work together towards a common goal,” said Reeve Larry Clarke for the County of Stettler.



## HAVE AN AED? REGISTER IT

Do you have an AED in your office, work place, home, community centre?

Stettler District Ambulance (SDAA) would like to reach out to the community to REGISTER AND MAINTAIN all Automatic External Defibrillators (AED's) in our community.

### WHY SHOULD YOU REGISTER YOUR AED?

- We will E-mail notification to site coordinators of pending battery or PAD expiry dates and monthly AED checklist completion
- We will provide formation for sites about where best to place an AED device on site
- We will provide assistance with developing or refining an emergency response plan
- We will provide ongoing support and communication for sites with PAD Administrator
- Website to answer your frequently asked questions about AEDs
- Self-registration of AED devices and equipment in a provincial database to monitor and track the location of the AED as well as site and site coordinator information
- Option to create groups of sites and devices to assist with managing AEDs (department or organization level views)

- AED location and site contact information listed with 911 dispatch to help save lives

### BENEFITS OF JOINING 'HEART SAFE COMMUNITY'

Heart Safe Community Public Access to Defibrillation (PAD) Program is operated by Alberta Health Services (AHS) Emergency

Medical Services (EMS) and is one of the first province-wide Automated External Defibrillator (AED) registration programs in Canada.

This program promotes increased survival from sudden cardiac arrest through educating and empowering the public to:

- Recognize the signs and symptoms of a cardiac emergency
- Call 911 – Emergency Medical Services for help
- Provide cardiopulmonary resuscitation (CPR)
- Use an Automated External Defibrillator (AED)

If you have an AED and would like to join the Heart Safe Program, please contact SDAA at 403-742-1900 or linda@stettlerambulance.com.

## YOUR REGIONAL RECREATION BOARD MEMBERS

PENNY DAHL	RED WILLOW AGRICULTURAL SOCIETY
SHAUN DERR	BOTHA COMMUNITY CENTRE
LEE PENNER	FENN EWING UNION
EUGENE NIXON	ENDMOOR CULTURE AND RECREATION SOCIETY
JOHN PEARSON	DONALDA AND DISTRICT AGRICULTURAL SOCIETY
MARK HIGGINS	ERSKINE SOCIAL RECREATION SOCIETY
DAN KNUDTSON	VILLAGE OF DONALDA
MARIE BIGNELL	WESTWOODS AGRICULTURAL SOCIETY
FRED ENTWISTLE	VILLAGE OF GADSBY
LES STULBERG	COUNTY OF STETTLER
DAN WEBSTER	BIG VALLEY AGRICULTURAL SOCIETY
LUKE RAJEWSKI	SUMMER VILLAGE OF ROCHON SANDS
HARRY NIBOURG	VILLAGE OF BIG VALLEY
BRIAN JOHNSTON	LINDA HALL SOCIETY
LAUREL POLE	STETTLER AGRICULTURAL SOCIETY



Lorraine Hankins, Director of Recreation making presentation to long-time volunteer, Doug Johnson.

# REGIONAL RECREATION

The County of Stettler Regional Recreation Board was established in 1974 by a group of concerned citizens who wanted to develop a coordinated effort for the development of recreation programs and facilities within the County of Stettler.

The Regional Recreation Board consists of nine electoral districts, each of which have an appointed representative. The Villages of Big Valley, Gadsby, Donalda and the Summer Village of Rochon Sands also have a representative stated in the signed agreement. The Stettler Agricultural Society has a representative and a Councillor from the County of Stettler is also appointed to the board, totalling 15 members.

Over the years, the Regional Recreation Board was responsible for distributing recreation dollars that were granted on a per capita basis for various projects with the County. This has helped establish some of the best facilities available in rural Alberta. The board presently distributes funds in the form of operational assistance grants that assist communities and groups with their facility operational expenses.

In addition, the board reviews and makes recommendations to council on grant applications made under the Recreation Special Project Fund.

The Regional Recreation Board currently meets on a quarterly basis to discuss issues and share information on topics pertaining to recreation, both locally and provincially.

The County of Stettler would like to recognize and thank long-time community representative Doug Johnson, who served on our Regional Recreation Board for 28 years. Doug Johnson started on the Regional Recreation Board as a representative for the Endiang and Byemoor area on January 9, 1989. He missed the total of two meetings during his time on the Recreation Board.

Doug has shared a wealth of information on recreation matters and has been a dedicated volunteer on the board for 28 years. Doug's last meeting was December 4, 2017 where he was presented with a framed print in recognition of all of his time and effort on the County of Stettler Regional Recreation Board.



# HAVE YOU BUILT YOUR 72 HOUR EMERGENCY KIT?

After the early October snowstorm which left many of us without power for 30-40 hours, we are reminded that mother nature is always the boss.

With that in mind, and the realization we are only one snow episode away from that happening again, we want to remind residents of Stettler County of the need to have a 72 hour Emergency Kit on hand, and to be prepared for the next weather event.

Here are some basic items to consider for your emergency kit:

- Three-day supply of water (4 L per person per day)
- Non-perishable food for all family members and pets (three-day supply). Consider power outages when selecting food.
- First-aid kit
- Flashlight, battery-powered radio and extra batteries
- An extra set of car keys, credit cards, and cash
- Extra eyeglasses or contact lenses
- Important family documents and contact numbers

- Prescriptions or special medications
- Chargers for electronic communication devices
- Insurance documents
- Emergency phone numbers list
- A change of clothes for each family member

Tips for building and maintaining your kits:

Your kit should be updated every six months to ensure food and medications are not expired, the water is fresh, clothing still fits, personal documents and credit cards are up-to-date, and batteries are charged.

Take away the hassle of remembering by setting a reminder on your calendar or use daylight savings as your reminder to update your emergency kits.

Consider seasonal requirements when you update your kits. In the spring include bug spray, sunscreen and hats. In the fall you trade the bug spray for warm clothing and extra blankets.



## TRANSFER STATION AND LANDFILL HOURS OF OPERATION

LOCATION	SEASON	DAYS OF THE WEEK	OPEN	CLOSED
Regional Landfill	Year Round	Monday-Friday	8:00 AM	6:00 PM
		Saturday	10:00 AM	6:00 PM
Stettler Transfer Station	Year Round	7 Days a Week	10:00 AM	6:00 PM
Botha Transfer Station	Year Round	Tuesdays	1:30 PM	5:30 PM
		Saturdays	8:00 AM	12:00 PM
Big Valley Transfer Station	Summer	Tuesdays	10:00 AM	4:00 PM
		Saturdays	10:00 AM	4:00 PM
	Winter	Tuesday	10:00 AM	2:00 PM
		Saturdays	10:00 AM	2:00 PM
Byemoor Transfer Station	Summer	Wednesdays	6:30 PM	8:30 PM
		Saturdays	10:00 AM	2:00 PM
	Winter	Saturdays	10:00 AM	2:00 PM
Donalda Transfer Station	Summer	Wednesdays	10:00 AM	2:00 PM
		Saturdays	10:00 AM	2:00 PM
	Winter	Saturdays	10:00 AM	2:00 PM
Erskine	Year Round	Wednesdays	1:30 PM	6:00 PM
		Saturdays	9:00 AM	2:00 PM
		Sundays	1:00 PM	6:00 PM
Gadsby Transfer Station	Summer	Wednesdays	1:30 PM	5:30 PM
		Saturdays	1:00 PM	5:00 PM
	Winter	Saturdays	1:00 PM	5:00 PM
White Sands Transfer Station	Year Round		Walk-in	

- **Winter Hours** run from Thanksgiving to Easter annually
- **Summer Hours** run from Easter to Thanksgiving annually
- The Regional Landfill and Stettler Transfer Stations are closed on all statutory holidays.
- All other transfer stations are closed on statutory holidays falling on a regular day of Operation, but will be open the day preceding the statutory holiday.



# COUNTY ON TARGET FOR FINANCIAL YEAR END

**The County of Stettler is in good financial standing - and we are always open to discussing citizen's concerns.**

"Cash flow projections for the County of Stettler are on target and plans and priorities for the 2018, 2019, and 2020 budgets are being prepared," said Larry Clarke, newly elected Reeve for the County of Stettler.

"The financial position of the municipality cannot be determined from a simple bank reconciliation. Overdrafts, demand loans or lines of credit are simply a tool used for cash management, particularly in the months immediately prior to the taxes being due," added Reeve Clarke.

Cash flow estimates for the County to the end of October 2017 predicted \$9.5 million in the bank. CAO for the County of Stettler, Tim Fox explained

at the end of October, actual was \$10.5 million in the bank. "Running on an operating line, which we heard was a concern for some, has been a long-term practice of many municipalities enabling them to operate, in our case until October 31 when our taxes are collected. The County of Stettler is exactly where we targeted to be in our financial plan and this aligns with the decision of Council for cash management for 2017, 2018 and 2019," added Fox.

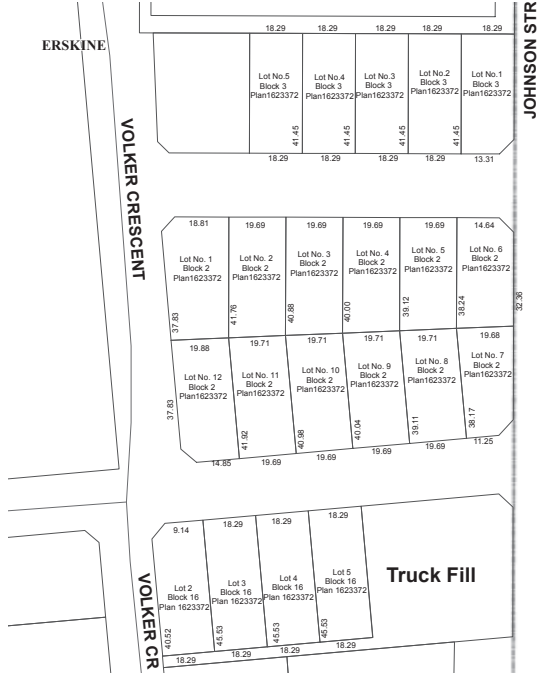
The County of Stettler is one of a few municipalities left maintaining a fall tax deadline of October 31 or the last business day in October, allowing farmers to get crops off and ranchers to get cattle to market before having to settle their tax bills. Most municipalities now collect taxes in spring, shortening the length of time they might rely on a line of credit or an overdraft.

"We have a very transparent and open organization here, and any one of us will sit

**LOTS FOR SALE**

**Erskine East  
Subdivision**

**Call 403-742-4441  
for more information.**



27

down with any member of the public and discuss financial standings and budgeting strategies for the County,” said Reeve Clarke. “Not only are we open to answering these questions year-round, we remind the public we are audited each year by Gitzel and Company CPA and are proud to have maintained clean audits for the past 12 years,” he added.

Reserves, which were used to build a new Public Works Facility as directed by Council, are estimated to be sitting at \$3.7 million at the end of 2017. Council’s 3-year plan was to replenish those reserves by more than double, to \$8.5 million by 2019. During the current budget planning process, Council will re-visit their 3-year plan and decide if that is still where our County’s priorities lie.

“The County of Stettler maintains very healthy reserves and an asset base. We welcome the opportunity to engage with citizens who have questions or concerns about our

financial standings.

The County of Stettler invites anyone to contact us 24 hours a day, 7 days a week through our website at [www.stettlercounty.ca](http://www.stettlercounty.ca), or to call during business hours Monday-Friday 8:30 AM - 4:30 PM and make an appointment to visit or have questions answered. And again, we invite ratepayers of the County of Stettler to attend our Public Budget Consultation, held annually for the past two years, which is the perfect opportunity for all members of the public to review and provide input towards what our new Council’s direction should be regarding a three-year budgetary plan,” stated Reeve Clarke.

The date for Public Budget Consultation will be advertised as soon as it has been determined. Follow us on our website at [www.stettlercounty.ca](http://www.stettlercounty.ca).

## Save a Tree

Sign up for e-versions of County Connection magazine by contacting [nthorsteinsson@stettlercounty.ca](mailto:nthorsteinsson@stettlercounty.ca) or by calling 403-742-4441.

It's also available on our website at [www.stettlercounty.ca](http://www.stettlercounty.ca).



# NOMINATIONS OPEN 2018 AWARDS IN BOTHA

The 41<sup>st</sup> Annual County of Stettler Community Service Awards will be held at the Botha Community Hall on the evening of Thursday, March 8, 2018. These awards recognize and honor community members and county residents for their outstanding contributions to recreation, culture, arts and voluntary service to their communities.

In the past the following groups have presented awards, but ***we encourage EVERY community within the County of Stettler to nominate their deserving volunteers*** and to become a part of this celebratory evening!

- Red Willow Agricultural Society
- Sullivan Lake West Agricultural Society
- Stettler Agriculture Society
- Donalds and District Agricultural Society
- Big Valley Agricultural Society
- Erskine Social and Recreation Society
- Endmoor Culture and Recreation Society
- Botha Community Centre

### **DEADLINE FOR NOMINATIONS: Jan. 31, 2018**

We welcome nominations for the two County-wide awards that are handed out each year.

**The Stettler Dodge Award** – is awarded to those volunteers who have shown outstanding community leadership in recreation. All nominees for this award are considered to be hard working, community minded people who have contributed greatly to the recreation of a community.

**The ATCO Electric, Cultural Arts and Heritage Award** – is awarded to volunteers who have shown outstanding leadership and commitment to the cultural aspects of our communities. These volunteers have spent countless hours teaching, coaching, leading and educating the community in various aspects of art and culture.

All nominations should be made in writing, either by mail: County of Stettler  
Attn: Lorraine Hankins  
Box 1270  
Stettler, AB T0C 2L0 or by email to [lhankins@stettlercounty.ca](mailto:lhankins@stettlercounty.ca) by January 31, 2018.

Tickets for this event will be available in February at the County of Stettler.

We look forward to seeing you in Botha.

# COMMUNITY EVENTS

Stettler Museum's  
(6502 44 Ave)

## Light the Night

**OPENING NIGHT      DECEMBER 1**  
Bake Sale      Wagon Rides  
Choir Performance

5-8 pm

December Fridays/Saturdays  
until Christmas

**SPECIAL NIGHTS**  
December 20, 21 5-8pm  
22-24 5-9pm



Botha Arena - New Years- Canada 150  
Botha Community Centre invites you to their  
FREE New Years Event  
NEW YEARS EVE - CANADA 150  
3:00 PM - Botha Arena

Sleigh Rides  
Skating  
Music  
Bonfire  
Board Games  
Hod Dog Roast  
Hot Chocolate at 5 PM  
Street Hockey after 6 PM  
(bring your own stick)

Contests and PRIZES for the best:

- New Years Eve Hat
- Noise Maker
- Canada 150 Outfit

Fireworks at 8:30 PM  
Fun for ALL AGES!



## Stettler Handibus

Now that Botha has joined  
the County of Stettler,  
Botha residents may access  
the services of Stettler  
Handibus.

Call Judy McKnight at  
403-742-5858 to schedule  
an appointment.

## Help Families in Need this Christmas

Donation boxes for NEW TOYS are located throughout the community.  
Monetary Donations are accepted at FCSS Office on Main Street; or at Gitzel & Company, CPA  
(tax receipt provided).

*THANK YOU - from the Stettler Community Christmas Hamper Society*

# COMMUNITY EVENTS

## Stettler County's Century Farm & Ranch

**Award** recognizes farm families that have continuously owned and actively operated the same land for 100 years or more. Contact us for more information. 403-742-4441.



## Blood Donor Clinic

January 8, 2018 - Stettler Community Hall  
3:30-7:30 PM Book an appointment at [www.blood.ca](http://www.blood.ca)

## Stettler Computer Re-Connect

Help keep computer equipment in use locally. Take your unwanted, semi-functional computers to FCSS on Main Street in Stettler. Heartland Beautification computer-expert volunteers will wipe the drives to NSA standards and refurbish the computers for community groups and families who can use them.

Includes desktops, laptops, monitors, speakers, webcams, mice and keyboards.

For more information:  
Phone: 403-742-4411 Email: [stettlerbc@gmail.com](mailto:stettlerbc@gmail.com)

Organized by the Heartland Beautification Committee in partnership with Stettler Family and Community Support Services.



Public Mail Agreement #41398593  
Return Undeliverable Canadian Addresses to:  
County of Stettler No. 6  
Box 1270  
Stettler, AB T0C 2L0