

Summer 2018

Stettler County Connection

COUNCIL APPOINTS

NEW CAO

pg 11

SPRING TOWN HALL TOUR

CANNABIS AND MORE

pg 20

Rural Crime
Prevention

Committee

pg 12

Attend one of our Town Hall Meetings

Tuesday, June 19	7:00 PM	Erskine I.O.O.F. Hall	Erskine
Thursday, June 21	7:00 PM	Byemoor Community Hall	Byemoor
TBD	TBD	Rochon Sands Community Hall	Rochon Sands
Tuesday, June 26	7:00 PM	Botha Community Centre	Botha
Wednesday, June 27	7:00 PM	Donalda Community Hall	Donalda



SPRING TOWN HALL MEETING TOUR

We're coming out to see you!

With several important issues and new legislation coming into effect, the County of Stettler has planned a Spring Town Hall Meeting tour. We have questions for you, and you might have some for us too. Please plan to attend a meeting in your area, and provide some input on important upcoming decisions.

Let your voice be heard:

- **Cannabis Legalization:** We want to know how you think cannabis should be sold and consumed in our communities. How should we control development in regards to retail locations? Where should production facilities be allowed? Your input will help us form our policies.
- **Public Engagement:** Public participation and engagement is the key to informing decisions made by municipalities. We are committed to inclusive public participation, and acknowledge people are busy and have many commitments and responsibilities. We want to know how we can make it easier for you to participate and engage with us.
- **Budget 2019-2021:** We are beginning the 2019 Budget Planning process. We want to hear from you. Where should our municipalities budget priorities lie? Where would you spend the dollars, and where would you save?
- **Weed Control:** Absinthe Wormwood is an invasive noxious weed in the County of Stettler and we are working together with targeted areas to gain control in Stettler County. Learn more about this program and what to look for.
- **Dust Control:** The County has begun to review the current Dust Control Policy and consider the future of dust control in our County. Help shape our new policy.

We will also tackle some local area issues as we tour throughout the County - and the public will have the opportunity to add items to our agendas as well. Come out, engage, let your voices be heard.



14



20



26

03 REEVE'S RAMBLINGS
Strategic Plan, Budget and Taxes

04 VOLUNTEERS
2018 Community Service Awards.

06 RESERVES
Sitting higher than expected.

08 FINANCIAL POSITION
Audited Statement.

09 AUDITED STATEMENT
Statement of Operations.

10 AG SERVICES BURSARY
Awarded to Keyonna Derr.

11 COUNCIL APPOINTS CAO
Yvette Cassidy takes the helm.

12 RURAL CRIME PREVENTION
A new County committee.

13 TAKE IT OR LEAVE IT
Re-open at Stettler Transfer Site.

14 WHEN DISASTER STRIKES
Stettler Regional Emergency Management.

17 FOREST TENT CATERPILLAR
What can I do to control them?

18 WEED OF THE MONTH
Flowering Rush.

20 CANNABIS LEGALIZATION
Provide your input for our bylaws.

26 STETTLER HISTORY BOOK
Inviting your submissions.



COUNTY CONNECTION

INTRO

“If the words you spoke appeared on your skin, would you still be beautiful?”

Our flags spent a lot of time at half mast over the past few months. Out of respect for those who lost their lives in the Humboldt Broncos bus tragedy; out of respect for those who fought the Battle of Vimy Ridge; out of respect for an MLA who passed away and gave countless hours of her time in service to Albertans.

This is one small gesture we make at the County of Stettler to offer respect.

Day-to-day, we take phone calls at the County regarding problems and incidents that have presented in our County. Myself, and my co-workers who spend more time together than apart it seems, are on the other end of the phone taking your calls. We want to help. We want to solve the problems, and we want to get you to the right department to expedite service. We’re going to need to ask questions. What do we need from you?

We ask for respect. We are confident we can help, we are happy to get to the bottom of your issue or problem, and we are trained to ask the right questions. But daily, too many of our ‘County family’ members are getting cursed at, yelled at and berated. Please take a moment to breathe. We offer our sincere respect to you, and we respectfully request for the same in return.

Niki Thorsteinsson
Director of Communications

Stettler County Connection

Summer 2018
Volume 8 Issue 2

Editor-in-Chief
Yvette Cassidy

Managing Editor
Niki Thorsteinsson

Printed by
Kathy’s Printing Service

All Rights reserved. Any reproduction of the contents without written authorization from the publisher is strictly prohibited. The publisher cannot be held responsible for any errors or omissions found within this newsmagazine, or for loss of, or damage to, unsolicited material submitted by readers.

Availability: Current Issues of County Connection can be obtained from the County of Stettler Administration Building while supplies last.

Subscription: County Connections is delivered free of charge to taxpayers, with exception to those who do not live in the Province of Alberta or have unsubscribed from our mailing list. If you wish to receive future copies, please make the request to the Managing Editor at nthorsteinsson@stettlercounty.ca. You may also view the current and back issues of the County Connection on our website at www.stettlercounty.ca.





Reeve Larry Clarke and Mayor Sean Nolls signing Volunteer Week Proclamation.

REEVE'S RAMBLINGS

As we approach the end of May I look around and see a flurry of activity as grain farmers try to get their crops in and cattlemen are trying to get cows and calves out to what could be stressed pastures from 2017. For producers the grain farmers are working with a very short spring seeding window whereas the mixed and cattle ranchers have had a very cold, wet winter and spring. Our daytime temperatures now look more in line with July and August and once again we are at Mother Nature's mercy for the 2018 producer season.

As discussed in my previous ramblings we have had a very busy few months finalizing our strategic plan which had the framework developed by council. This plan was reviewed, adjusted and agreed to by staff with responsibilities and timelines agreed to by all. The 2018 budget has been prepared, concerns listened to, debated, re-worked, reviewed and presented at a public meeting, and approved by Council at the May 9 council meeting. Now our very capable staff is able to focus on their operational commitments to move our great county forward.

The 2018 budget is estimated to be approximately \$600,000.00 less than 2017 actuals. We have our financial challenges as the linear (oil and gas) taxes continue to decline, municipal government requirements increase and ratepayer requests and expectations escalate. We have made changes to this year's gravelling plans - having county equipment and staff and required contract trucks gravel the NE and SE quadrants of our county, utilizing our stockpiled gravel. This allows us to utilize the county supply of gravel while delivery and spreading costs are closely tracked and monitored to ensure this year's budget commitments are met.

With the above listed increase and maintenance of delivered services, carbon tax implications of more than \$100,000.00 and increased costs of materials and labour we have debated and council has implemented a tax increase of 1% on residential

and 2% on linear, machinery & equipment, and agriculture. This increase will help keep up with the cost of living increases and carbon tax costs. This is part of doing business ensuring we maintain levels should prevent major increases in future budget years. No one likes increases but they are required and part of doing business in order to maintain the high level of service county residents expect and deserve. Staff are currently compiling and working 2019 budget estimates to facilitate a quicker budget implementation next year.

As with the seasons there is constant change and the County of Stettler has had its share. We are very pleased Yvette Cassidy accepted the role of CAO and will guide our county through all of the coming challenges with her vast background and experience.

Two of our Community Peace Officers retired this spring. We have listened closely to residents and concerns on rural crime. Lee Hardman joins us as Director Of Protective Services and Chad Jackson joins us part time in this department as a Community Peace Officer. In addition, we will fill a second full time Community Peace Officer position and look forward to having an increased Peace Officer presence out in our county. I would like to thank John Bishop and Terry Best for their dedicated service, and wish them all the best in their retirement.

With the beautiful temperatures and the trailers travelling our highways, all indications point to summer. As a farmer and as we finish our busy calving and seeding time of year, everyone please take the time to ensure things are done safely so all can enjoy our summer with family and friends and prepare to reap the rewards of harvest in the upcoming seasons.

Larry Clarke



Domonic Miles receiving the Botha School Youth Service Award from Ryan Nixon.



Natalie Kobi receiving the Botha Community Centre Youth Service Award, presented by Ryan Nixon.



Endmoor Lifetime Service Award was awarded to Doug Johnson who was unable to attend. His wife Deanna Johnson accepted the award on his behalf. In the photo are representatives from the Sullivan Lake West Ag Society, Byemoor Community Club, and various clubs from that area of Byemoor and Endiang.



Atco Electric representatives Mark Higgins (left) and Ron Hennel (far right) presenting Atco Electric Arts and Culture Heritage Award to recipients Irene and Dean Kerbes.

COMMUNITY SERVICE AWARDS

The 41st Annual County of Stettler Community Service Awards were held at the Botha Community Hall on March 8, 2018. This annual event celebrates our outstanding volunteers in agriculture, recreation and culture that provide selfless contributions towards enhancing the spirit of our rural community. This year we added two additional youth awards to recognize the contributions of our younger generation.

The Stettler Dodge Community Service Award was awarded to Ken and Eleanor Schultz for their volunteer efforts in Big Valley and the ATCO Electric Arts, Culture and Heritage Award went to Dean and Irene Kerbes for their work in the Linda Hall area.

We'd like to thank our valuable sponsors!

STETTLER DODGE
ATCO ELECTRIC
TD CANADA TRUST - Stettler
VISION CREDIT UNION - Stettler
ROYAL BANK - Stettler
ATB FINANCIAL - Stettler
BOTHA COMMUNITY CENTRE
COUNTY OF STETTLER AG
SERVICES BOARD



Lorraine Hankins, Stettler County's own Director of Recreation, receiving the Botha Community Centre Lifetime Community Service Award, presented by Ryan Nixon.



Eugene Nixon receiving the Sullivan Lake West Agricultural Society Community Service Award from Sherry Marshall representing award sponsor TD Canada Trust and John Schofer from Sullivan Lake West Ag Society.



Ken and Eleanor Schultz receiving the Stettler Dodge Community Service Award from award sponsor Stettler Dodge representative Darren Benson and presented by Doreen Nixon (green shirt).



Celeste Montpellier receiving the Stettler and District Agricultural Society Community Service Award from Holly Moir representing Vision Credit Union and Laurel Pole representing Stettler District Agricultural Society.



Art Tizzard accepting the Big Valley Agricultural Society Community Service Award from Terry O'Malley representing Royal Bank and Dan Webster from Big Valley Ag Society.



Jacob Webster (centre) receiving the Big Valley Agricultural Society Youth Service Award from Dustin Houston and Lorraine Hankins, who is standing in for sponsor ATB Financial.



Dale and Ron Jamieson accepting the Donalda Agricultural Society Community Service Award presented by Beth Fulton.

6

2018 Property Tax Notices will be mailed out June 14, 2018. Council implemented a 1% increase on residential assessments, and a 2% increase to linear, Machinery & Equipment and agriculture. The increase will help us keep up with cost-of-living increases and carbon tax costs. If you have any questions or concerns regarding your property tax bill please contact our Tax Department 403-742-4441 – select 1.

If you have concerns regarding your property assessment, please contact our Assessment Department to speak with the assessor. If after speaking with the assessor, you cannot come to a satisfactory resolution then you have the option to proceed with a complaint to the Assessment Review Board, against your assessment on your property. The deadline for assessment complaints is August 21, 2018 at 4:30 PM, and the forms can be found on the County website or the Alberta Municipal Affairs website and please ensure the applicable fees are included.

A reminder that last spring, County Council made the change to no longer accept Credit Card Payments for property taxes. The reason for this change was budget and excessive fees associated with using credit card companies. We do accept Cash, Cheque, Debit or Online Banking. The County of Stettler Tax deadline is Wednesday, October 31, 2018.

2017 AUDITED FINANCIAL STATEMENTS

The County of Stettler has once again received a clean management letter for the audited 2017 Financial Statements which were presented to Council by accounting firm Gitzel & Company Chartered Professional Accountants. County reserves are sitting much higher than anticipated.

“We are very pleased to receive another good bill of health for our financial statements and systems at the County of Stettler. The big story here is that while we predicted our reserves (savings) to be sitting at \$3.2 million after using them to build our new Public Works Facility, they are actually, as of now, sitting just shy of \$6.5 million,” said Chief Administrative Officer Yvette Cassidy for the County of Stettler. The new Public Works Facility was completed and has been operational since June 2017 and reserves were replenished more quickly than anticipated due to frugal money management and fiscally responsible moves by each department.

NOTES TO THE FINANCIAL STATEMENTS
FOR THE YEAR ENDED DECEMBER 31, 2017

16. RESERVES

Reserves for operating and capital activities changed as follows:

	2016	Increases	Decreases	2017
OPERATING RESERVES:				
Public Trust	\$ 170,821	\$ 14,511	\$ -	\$ 185,332
General	1,848,161	-	450,000	1,398,161
Botha	-	35,000	-	35,000
Disaster projects	175,000	-	-	175,000
Bridges	955,751	130,000	138,791	946,960
Gravel	-	110,000	-	110,000
Digital services	28,000	-	-	28,000
Road plan registration	100,000	-	-	100,000
Agricultural services	10,000	-	-	10,000
Planning and development	75,980	31,616	-	107,596
Rural development fund	314,210	78,730	14,994	377,946
Municipal reserve	980,660	10,814	-	991,474
Doctor recruitment	44,609	12,034	-	56,643
F.C.S.S.	17,110	-	-	17,110
Recreation	45,664	504	-	46,168
Recreation – Special Projects	347,263	50,000	54,473	342,790
Recreation – Extra Projects	<u>470,000</u>	<u>50,000</u>	<u>470,000</u>	<u>50,000</u>
	<u>5,583,229</u>	<u>523,209</u>	<u>1,128,258</u>	<u>4,978,180</u>
CAPITAL RESERVES:				
Administration	2,229	-	-	2,229
Fire	441,662	-	-	441,662
Protective services	20,000	20,000	-	40,000
Water/Sewer projects	1,168,279	138	245,591	922,826
Agriculture services	<u>88,000</u>	<u>21,000</u>	<u>-</u>	<u>109,000</u>
	<u>1,720,170</u>	<u>41,138</u>	<u>245,591</u>	<u>1,515,717</u>
TOTAL	\$ <u>7,303,399</u>	\$ <u>564,347</u>	\$ <u>1,373,849</u>	\$ <u>6,493,897</u>

* To view the full 2017 Financial Statement, please visit our website at www.stettlercounty.ca or call the County of Stettler at 403-742-4441.

AS AT DECEMBER 31, 2017

	2017	2016
FINANCIAL ASSETS		
Cash and short-term investments (Note 3)	\$ 7,250,614	\$ 10,259,239
Taxes receivable (Note 4)	1,419,442	681,016
Trade and other receivables (Note 5)	1,564,989	2,259,933
Local Improvement levies receivable (Note 6)	629,334	668,599
Land held for resale	1,308,082	707,890
Debt charges recoverable (Note 7)	910,255	2,727,791
Long-term investments (Note 8)	<u>2,853,347</u>	<u>2,853,325</u>
	<u>15,936,063</u>	<u>20,157,793</u>
LIABILITIES		
Accounts payable and accrued liabilities	1,032,048	3,850,342
Deposit liabilities	22,375	20,675
Employee benefit obligations (Note 9)	147,355	128,098
Deferred revenue (Note 10)	621,099	-
Bank term debt (Note 11)	1,330,142	3,708,245
Other long term liabilities (Note 12)	4,234,686	4,320,459
Debenture term debt (Note 13)	<u>456,231</u>	<u>592,777</u>
	<u>7,843,936</u>	<u>12,620,596</u>
NET FINANCIAL ASSETS (DEBT)	<u>8,092,127</u>	<u>7,537,197</u>
NON-FINANCIAL ASSETS		
Tangible capital assets (Schedule 2)	98,038,895	94,411,501
Inventory of materials and supplies	5,694,409	6,452,871
Prepaid expenses	<u>233,927</u>	<u>187,994</u>
	<u>103,967,231</u>	<u>101,052,366</u>
ACCUMULATED SURPLUS (Schedule 1)	<u>\$ 112,059,358</u>	<u>\$ 108,589,563</u>
Contingencies - See Note 19		

APPROVED ON BEHALF OF THE BOARD:

* To view the full 2017 Financial Statement, please visit our website at www.stettlercounty.ca or call the County of Stettler at 403-742-4441.

STATEMENT OF OPERATIONS
FOR THE YEAR ENDED DECEMBER 31, 2017

	Budget (Unaudited)	2017	2016
REVENUES			
Net municipal property taxes (Schedule 3)	\$ 14,350,187	\$ 14,369,587	\$ 15,508,589
Sales and user fees	1,095,566	1,294,574	1,343,279
Government transfers (Schedule 4)	575,977	601,276	596,334
Investment income	115,560	79,339	132,310
Penalties and costs on taxes	40,000	326,460	245,949
Rentals	100,000	111,946	117,103
Licenses, permits and fines	26,000	41,042	40,272
Other	7,300	4,127	26,061
Recovery of amortization to capital projects	-	128,148	-
Gain on disposal of tangible capital assets	-	-	33,230
Total revenue	<u>16,310,590</u>	<u>16,956,499</u>	<u>18,043,127</u>
EXPENSES (Schedule 5)			
Legislative	386,300	347,583	321,650
Administration	2,686,360	2,497,803	2,524,232
Protective services	1,152,205	981,516	989,654
Roads, streets, walks, lighting	11,494,113	10,726,973	11,193,645
Water and wastewater	1,469,639	1,496,178	1,365,576
Waste management	380,642	395,553	326,378
Family and community support	234,554	228,647	226,400
Ag services	745,550	644,859	669,918
Subdivision land and development	705,350	529,701	463,476
Recreation, parks and culture	939,434	926,325	962,525
Provision for allowances	5,000	162,470	1,299,412
Other	57,100	50,644	57,521
Total expenses	<u>20,256,247</u>	<u>18,988,252</u>	<u>20,400,387</u>
EXCESS (SHORTFALL) OF REVENUES OVER EXPENSES – BEFORE OTHER	<u>(3,945,657)</u>	<u>(2,031,753)</u>	<u>(2,357,260)</u>
OTHER			
Government transfers for capital (Schedule 4)	3,831,096	3,169,342	4,068,697
Local improvements levies for capital	63,200	290,920	55,000
	<u>3,894,296</u>	<u>3,460,262</u>	<u>4,123,697</u>
EXCESS (SHORTFALL) OF REVENUES OVER EXPENSES	\$ (51,361)	1,428,509	1,766,437
ACCUMULATED SURPLUS - BEGINNING OF YEAR		108,589,563	106,823,126
DISSOLUTION OF THE VILLAGE OF BOTHA INTO THE COUNTY OF STETTLER (Note24)		<u>2,041,286</u>	-
ACCUMULATED SURPLUS - END OF YEAR		\$ <u>112,059,358</u>	\$ <u>108,589,563</u>

* To view the full 2017 Financial Statement, please visit our website at www.stettlercounty.ca or call the County of Stettler at 403-742-4441.



Congratulations to Keyonna Derr who was awarded the 2018 Agricultural Services Board Bursary. Chairman of the Agricultural Services Board, Dave Grover (left) and Director of Agricultural Services, Quinton Beaumont (right) are making the presentation.



COMMON BUCKTHORN INVASIVE. NOXIOUS. WEED.

Common Buckthorn, otherwise known as European Buckthorn, has been found in two locations in Alberta, one in Edmonton along the North Saskatchewan River, and the other in Stettler County. It was originally brought to North America from Eurasia as an ornamental, but soon Common Buckthorn spread throughout the continent. High seed production and excellent tolerance to Canada's climate allow this tree to out compete many native species.

Common Buckthorn is a deciduous shrub or tree, growing to 7 metres or more. Branches are usually tipped with a spine, and scratching away the outer bark will reveal bright orange inner bark. The best time to scout for this tree is at the very beginning and end of the growing season,

as it is one of the first trees to grow and shed its leaves.

Control of this species usually involves a combination of mechanical, cultural, and chemical methods. Whole tree removal, berry removal, chemical herbicides, and mulching combined with revegetation are some options that should be used together.

The earlier this invasive noxious weed is found, the less costly and time consuming control will be. For more information on this or any invasive plant, contact your local Agricultural Fieldman at the County of Stettler at 403-742-4441, or Alberta Invasive Species Council.



The new Chief Administrative Officer for the County of Stettler, Yvette Cassidy.

COUNCIL APPOINTS NEW CAO

At a Special Council Meeting on Wednesday, February 28, 2018, County Council offered the position of Chief Administrative Officer (CAO) for the County of Stettler to long-term Assistant CAO, Yvette Cassidy.

Cassidy has worked for the County as Assistant CAO since January 1, 2006. Her history includes working as the CAO for the Village of Big Valley for 14 years, and prior to that role she worked for Crown Life Insurance and Plaza Hotels for more than ten years.

"I am honored that council put the trust in me to take the helm, and I look forward to working with our excellent staff to continue to move this county and our extended services forward. I am excited to continue our work administering Stettler District Ambulance, Shirley McClellan Regional

Water Services Commission, Stettler Regional Fire, Stettler Waste Management and the Stettler Regional Emergency Management Agency, and I embrace the challenge of continuing our activities as innovative, forward-thinking municipal leaders," added Cassidy.

Reeve for the County of Stettler, Larry Clarke said, "Council is very pleased that Yvette has accepted the role of CAO for the County of Stettler. Her experience and dedication to our county will ensure county business and operations are handled professionally and proficiently. She has a strong and dedicated staff to support her in the transition to this role."



RURAL CRIME PREVENTION COMMITTEE

A Rural Crime Prevention Committee (RCP) has been formed for the County of Stettler. The RCP is a committee established for the purpose of formalizing the process for receiving input from our community and the partnership between the community, the RCMP and local government.

Their objectives include:

- To advise the RCMP on policing priorities identified through community input
- To keep the RCMP and the community informed of emerging trends and issues in relation to Rural Crime Prevention within the community
- To make and/or implement recommendations on community policing initiatives based on identified trends and issues
- To act as a liaison between council, residents, community groups and the RCMP
- To inform and collect information from the rural residents and share information in an open manner, with the community
- To work with other jurisdictions in our region to ensure that prevention does not have borders
- Inform other levels of government of priorities and objectives in rural crime prevention

The RCP members include two County Councillors appointed to the committee by Council at the annual organizational meeting: Cheri Neitz and Wayne Nixon, plus seven representatives from the community, one member from the RCMP and one member from

Take It or Leave It

13

Our popular Take it or Leave it Centre is once again open at the Stettler Transfer Site.

Drop off your unwanted but usable large items for others to take for free.

Open daily from 10 a.m. to 6 p.m.



Fish and Wildlife. Members-at-Large applied through Council to be on the committee and Council made the appointments. Members serve a two year term and meetings are held four times per year.

On June 7, the RCP held their first Rural Crime Prevention Community Meeting. Items discussed included 'Keeping your Property Safe'; What/How to properly report crimes; and Rural Crime Watch and Community Communication. The RCMP, Community Peace Officers, Community Leaders and Rural Crime Prevention Committee Members were on hand to discuss issues relating to rural crime in our communities.

The RCP committee will evaluate the June event held in Erskine, and make plans to hold further

events throughout our County. To stay informed, follow our website at www.stettlercounty.ca. You can sign up for alerts to events added to the community calendar by clicking on the 'Notify Me' button and sign up for alerts under 'Calendar'. You can receive alerts to your email address or by text to your phone.

The County of Stettler would like to recognize and thank the members-at-large currently participating on this committee: Brent Mailer, Barry Haner, Terry Schiffner, Joe Gendre, Tom Fisher, Ed Bennett and Jane Skocdopole.



WHEN DISASTER STRIKES

The County's Protective Services two staff members both retired this spring, and we will certainly miss them and wish both Terry Best and John Bishop a very happy retirement.

We welcome our new Director of Protective Services, Lee Hardman to the County, plus we are pleased to have Chad Jackson, a current County employee join Protective Services in a part-time capacity. Most recently, Clinton Sime has been hired as our second full time Community Peace Officer, and he will officially join us on June 25.

We will be pleased to provide increased patrols and support throughout the County of Stettler as we get back to full staff in this department, plus the addition of our new half-time position.

Additionally, Chad and Lee have assumed the

positions of Deputy Director of Emergency Management, and Director of Emergency Management for the Stettler Regional Emergency Management Agency.

Our Protective Services staff members serve as the Director of Emergency Management (DEM) and the Deputy Director of Emergency Management (DDEM). They are responsible for the Stettler Regional Emergency Management Agency which encompasses the Town of Stettler and all municipalities and Summer Villages within the geographical boundary of the County of Stettler No. 6.

In the event of a local state of emergency being declared by one of the municipalities, the County of Stettler Meeting Room in the Administration Building is converted into the Emergency Operation Centre (E.O.C.) to



manage the event. Currently we have more than 50 trained staff members who would coordinate, fill positions and assist the E.O.C.

E.O.C. staff are trained in emergency management and from the E.O.C. they would assist all agencies at the disaster site to provide resources and whatever else may be required to manage the event. Additionally, they would be keeping elected officials informed so that they can make the appropriate decisions.

Our administration building is equipped with a backup emergency generator that is capable of providing power to the entire building in the event of a power outage. As well, all stations have their own internet access and dedicated phone lines.

We encourage everyone to download the Alberta Emergency Alert App on their phones, and to have or make a 72 hour emergency kit and plan in place for you, your family and your livestock in the event of a disaster. You can also sign up to receive Alerts posted on the county's website. Go to www.stettlercounty.ca, click on 'Notify Me', then sign up to receive 'Alert Centre' notifications either by email or through a text message to your phone.

**Know the Risks
Make a Plan
Get a Kit**

Visit www.getprepared.gc.ca for more information.



DEVELOPMENT SETBACKS

Please remember that you do not need a development permit from the County for any agricultural operation as long as any structures such as hay sheds, granaries, dugouts, livestock shelters and barns meet the 125 feet setback from the center line of the County road.

Shelterbelts must be set back 75 feet from the center line of the road. If you wished to vary from these setbacks for any agricultural operation, you would require a development permit.

You may need a license/permit from the Natural Resources Conservation Board if your agricultural

operation includes a confined feeding operation (please call the NRCB at 1-340-5241).

If development is proposed along a provincial highway a Roadside Development Permit issued by Alberta Transportation is required. Please contact Alberta Transportation at 403-854-5550 or visit their website at <http://www.transportation.alberta.ca>.

For more information regarding development please contact the County's Planning & Development Department at 403-742-4441.



FOREST TENT CATERPILLAR

What's the problem?

Although this species prefers trembling aspen, it is also found feeding on the foliage of birch, ash, maple, fruit trees and cotoneaster. During severe infestations the caterpillars will feed on almost any green leaves, including garden crops.

Heavy defoliation for two or more years can result in a decline in the health of a tree which makes it more susceptible to attack by other pests.

What can I do?

For the urban homeowner, cultural control is the first line of attack against forest tent caterpillars. This consists of the removal of egg bands from infested trees and shrubs. The egg bands are easily detected between fall and leafing out in spring when the leaves are absent from the trees. Once discovered they can simply be scraped off with a dull blade.

Laboratory analysis of egg bands shows a significant impact of parasitic wasps on the hatching of forest tent caterpillar eggs. So rather than discarding those egg bands, leave them somewhere outdoors above the winter snow levels where the caterpillars will starve, but the tiny wasps can complete their development.

If some egg bands are missed or are inaccessible, clusters of caterpillars can be removed by pruning or washing down with a strong jet of water. Small caterpillars will rarely manage to recover from this, while larger ones can be controlled individually by physical means.

Keep in mind that light defoliation has little effect on tree growth.



WEED OF THE MONTH FLOWERING RUSH

Flowering rush is easiest to identify when in flower, reaching about three feet in height. Each umbrella-shaped cluster has whitish pink pedals, with green stems that resemble bulrushes. Flowering rush is very difficult to identify, as it closely resembles many native plants, especially common bulrush. Its extensive root system can break into new plants if disturbed, spreading quickly to new areas.

Flowering Rush is in the Red Deer River, west of our County at this point. We are actively surveying the waterways in our County looking for all types of invasive plants, including Flowering Rush.

Control Methods for Flowering Rush, if found, are to hand cut the flowers, and remove from the water. Once removed, the plant tops must be dried down to stop growth. The best time to do

this work is before June, if heads are cut before June, there is a greater chance of removing the seeds before they are viable.

Easiest to identify when flowering, the flowers grow in umbrella shaped clusters and each individual flower has three whitish pink petals and three similar but smaller sepals. Plants only produce flowers in very shallow water or on dry sites.

Green stems are triangular in cross section. These plants are found along shore, have erect leaves and grow to about three feet in height. The leaf tips may be spirally twisted. Under water, the leaves are limp. An extensive root system that can break into new plants if disturbed. For more information on removal or control, contact our Agricultural Services Department at 403-742-4441.

Painting Event

Saturday, July 21, 2018

Village of Big Valley, AB

Located at the junction of
HWY 56 and 590

8- 10 am Register at the Big Valley Train Station **\$10**

Registration ensures you a spot for the Art Show and Sale. Discount coupons from local merchants, map highlighting the best viewpoints, door prizes, contests and much more.

Bring your own table for the Art Show and Sale.

10-3pm Plein Air Workshop Instructed by Cheryl Peddie

Oil or acrylic and bring your own supplies.

Limited spaces available. Fee: \$40

8 am -6pm Plein Air Painting at various locations in Big Valley

3pm to 6pm Art Show and Sale in the Station Park

4pm Alberta Prairie Steam Train Arrival

6pm Happy Hour at the Big Valley Inn

Join us for a fun day of painting!!

Visit our many local merchants

Lori's Leather and Repair

Buffalo Trading Post

Boardwalk Bistro

Granny's Fudge Factory

Kathleen's Kwits

All That Buzz

Frontier General Store

Big Valley Inn

JP'S Pizza

Vivian's Art Gallery

Miss Patti's Photo Parlour

Forever Framing

Cheryl Peddie—Instructor

I work as a full-time artist and art instructor in Calgary, Alberta. I've been painting in oil for over 20 years, and enjoy creating paintings of our local landscape, urban scenes, interiors, still life and animals. In 2014, I began 'plein air' painting – painting outdoors

from life. It opened me to a new way of seeing and living as an artist. I like knowing that I've spent time experiencing each location I've painted. This connects me to my work more intimately than if I'd just snapped a photo for a reference, then moved along. As a result, my paintings (both plein air and the studio work it inspires) become more compelling, authentic, and are more joyful to create. The primary inspiration behind my work is light. I love that the time of day, weather and season all work to create different lighting conditions, climate and mood. With the variety of weather we enjoy in Alberta, I'm able to tell a different story each time I paint. I paint outside year-round.



Thank you to : The Friends of the Big Valley Library Society, Alberta Prairie Steam Tours, Canadian Northern Society, and the Village of Big Valley.

For more information contact Rose 403-741-9800 or Cindy 403-876-2132

Provide your input on Cannabis bylaws for the County of Stettler

Attend one of our Town Hall Meetings

Tuesday, June 19	7:00 PM	Erskine I.O.O.F. Hall	Erskine
Thursday, June 21	7:00 PM	Byemoor Community Hall	Byemoor
TBD	TBD	Rochon Sands Community Hall	Rochon Sands
Tuesday, June 26	7:00 PM	Botha Community Centre	Botha
Wednesday, June 27	7:00 PM	Donalda Community Hall	Donalda

THE COUNTY'S ROLE IN CANNABIS LEGALIZATION

With the Federal Government set to legalize cannabis this year, municipalities like the County of Stettler have been given a specific role in shaping how cannabis will be sold and consumed within our communities. Legislation at all three levels (federal, provincial and municipal) are aimed at regulating the production, consumption and sale of cannabis.

Consumption

Albertans who are 18 or older may smoke or vape cannabis at home and in some public places, but not in vehicles, cannabis retail outlets, anywhere smoking or vaping tobacco is restricted, or in areas frequented by children including school and hospital properties and within five metres of skate parks, spray parks, and playgrounds.

County of Stettler's Role

The County of Stettler can choose to use existing bylaws such as the nuisance bylaw or put in place new bylaws, like a smoking bylaw, to further define restrictions on where cannabis may be consumed in public spaces within their community.

Retail Sales for Cannabis

Albertans may purchase cannabis products online through a website operated by the Alberta Gaming and Liquor Commission (AGLC). Albertans may also buy cannabis products through privately owned and operated specialized retailers.

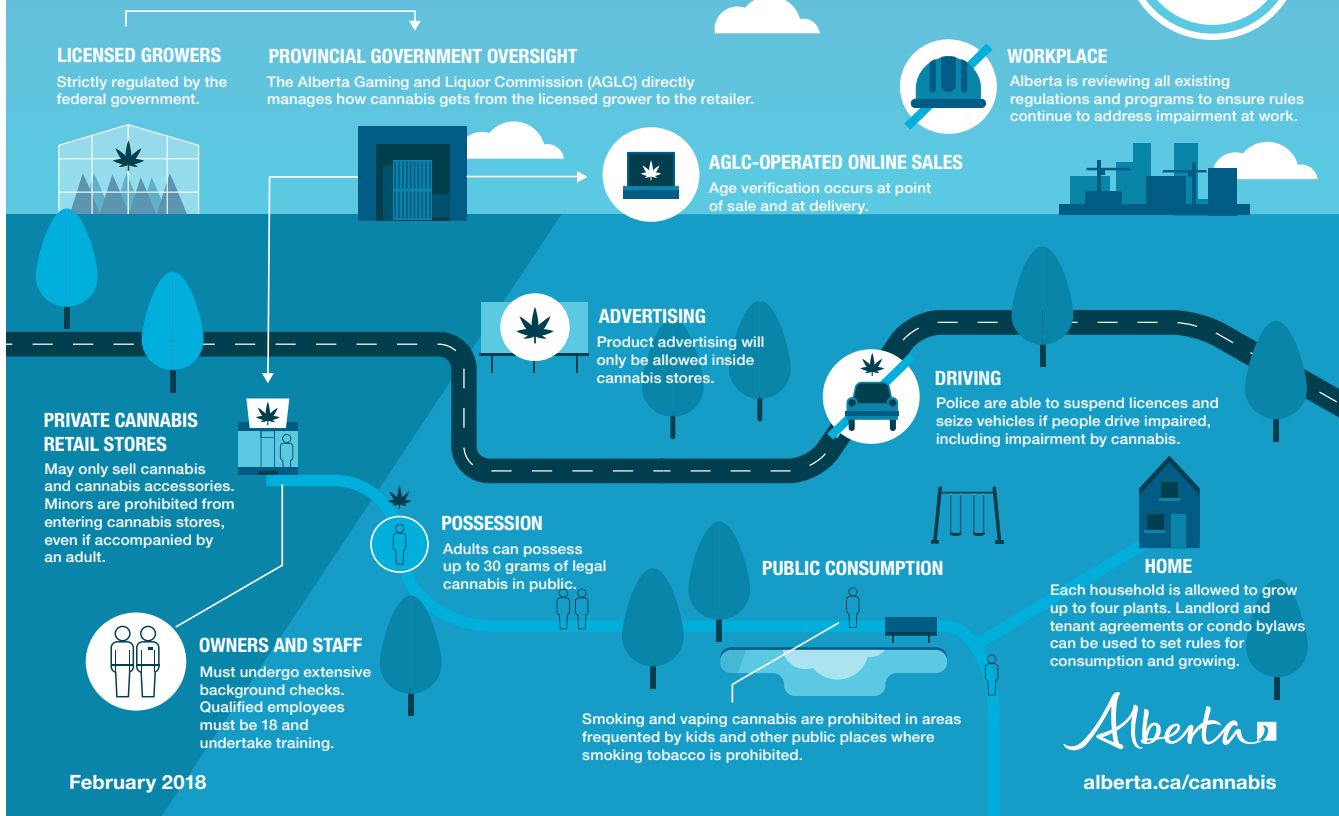
The AGLC will regulate retail licensing and licensees must follow rules set by government, which include where stores can be located, hours of operation, physical store requirements, age of staff and staff training. The maximum hours of operation for cannabis retail stores will be aligned with the limits for alcohol retail stores (10 am - 2 am). Provincial regulations will establish minimum setback distances of 100 metres for cannabis stores from sensitive land uses, such as schools and provincial health care facilities.

County of Stettler's Role

The County of Stettler will set the development rules for new cannabis developments in our existing land use bylaw, and will have decisions to make on development applications relating to cannabis retail locations.

The Future of Cannabis in Alberta

The rules around cannabis in Alberta once it is legal in summer 2018.



The County of Stettler will also be responsible for ensuring our land use bylaws are consistent with Gaming, Liquor and Cannabis Regulation requirements for cannabis retail locations.

The County of Stettler will have discretion to vary certain rules to be either more or less restrictive than the regulations set by the province. For example, the County could create more restrictive hours of operation for cannabis stores; or, establish shorter or further distances from sensitive use areas.

Where applicable, the County will also be responsible for granting development approvals and/or business licences to prospective cannabis retailers. We will need to develop appropriate application processes, licence conditions and fees, and assessment criteria to ensure that cannabis retailers meet the needs of the communities in which they are located.

Cannabis Production

While the Alberta government is responsible for regulating the distribution and retail system for non-medical cannabis, the federal government will continue to be responsible for developing, licensing and regulating cannabis production facilities.

Health Canada will be responsible for enforcing matters related to regulating licensed producers and cannabis production. As with the existing retail approach to liquor, the AGLC will be responsible for enforcing all provincial rules and regulations related to the retail sale of cannabis in Alberta.

County of Stettler's Role

The County will have to establish land use bylaws and processes for considering development applications related to cannabis production facilities. The Land Use Bylaw is an important tool for determining where production facilities can be located.

Next Steps

The County of Stettler wants to engage our communities to determine how they would like the County of Stettler to implement the legalization of cannabis on our communities. This engagement will be taking place over the next 3-4 weeks, through an online survey and at Town Hall Meetings being held throughout the County.

For more information and to fill out the survey, please visit our website at www.stettlercounty.ca and click on the *Cannabis Legalization* articles.



SUMP PUMPS & GRINDER STATIONS

What is clear water?

Clear water from sump pumps is water that is not contaminated with waste that requires treatment. Clear water belongs in creeks and ponds, in groundwater, or in storm sewers; not in sanitary sewers. Based on research of flows over the past several years, it appears that there is often too much clear water getting into septic tanks.

Once clear water is in the sanitary system/septic tank, it must be transported and treated as wastewater—which results in increased costs to customers in the case of Buffalo Sands, due to a greater amount of wastewater being transported.

What is an improper connection?

An improper connection is a connection that permits extraneous clear water to enter the sanitary sewer system. That extraneous water should either be going to the storm sewer or

allowed to soak into the ground, without entering the sanitary sewer.

There is also an increased cost to home owners in electricity bills. Clear water is first pumped up from the weeping tile, then through an improper connection and pumped again through the grinder pump station. This water only needs to be pumped once, thereby saving on power bills.

Water Leaks

The County of Stettler No. 6 suggests that people double check their places before they leave to ensure toilets or other water fixtures are not left running. You may not be back again before a large water bill accumulates.

Recently a toilet left running unattended for approximately 3 days in a cabin resulted in an extra 5 truckloads of wastewater to be hauled away.



WATER WISDOM 101

ENVIRONMENTAL TIPS

WHAT YOU FLUSH CAN COME BACK TO HAUNT YOU!

Your sewer system was designed to handle human waste and toilet paper – AND THAT'S ALL.

To avoid a costly encounter, never flush:

- 'flushable' wipes
- pet, baby or cleaning wipes
- paper towels
- facial tissue
- feminine hygiene products
- small toys
- fats, oil or greases (don't pour, store)
- bandages
- cat litter
- disposable diapers
- condoms or wrappers
- cotton balls or swabs
- prescription medication
- cigarette butts
- dental floss
- hair

REMEMBER THE THREE P'S!

Only pee, poo and (toilet) paper can be flushed down the toilet.
Everything else is trash – put it in the bin.



PARADISE SHORES UPDATE

The final stage of the dispute resolution process, a meeting of the Buffalo Lake South Shore Intermunicipal Development Plan group led to a recommendation to the municipal councils of the Summer Village of White Sands, the Summer Village of Rochon Sands, the County of Stettler and the developer, David Hamm of RV Sites Canada on May 3, 2018. The recommendation, once in place, will bring to resolution, disputes over the proposed Paradise Shores Development on the south shore of Buffalo Lake, Alberta.

The IDP planning group recommendation is that the Summer Village of White Sands and Summer Village of Rochon Sands agree to a reduced density of 750 RV stalls at the Paradise Shores development. With the dispute resolution process concluded, second reading of Bylaws 1588-18 (area structure plan) and 1589-18 (rezoning) can occur, which will enable the County of Stettler Municipal Planning Commission to negotiate conditions on the development permit.

“County Council is pleased the dispute resolution process was successful between the Summer Village of Whites Sands, the Summer Village of Rochon Sands, and ourselves,” said Reeve Larry Clarke for the County of Stettler. “We appreciate the open-minded spirit in which everyone involved entered into this dispute resolution process, which concluded in what we believe to be a successful

negotiation. We appreciate the trust portrayed from the Summer Village councils in reaching this agreement.”

The developer will now revise the area structure plan indicating a maximum of 750 RV stalls as the new proposed density at Paradise Shores RV Resort. The revised application was presented to County Council at the May 9 Regular Council Meeting, and County Council gave it second reading at that time.

The Municipal Planning Commission is now negotiating conditions for the development and may consider third reading. The next scheduled Council meeting when they could consider third reading is scheduled for Wednesday, June 13. The next Municipal Planning Commission Meeting is scheduled for Wednesday, June 27, 2018. If any Special Meetgins are called, we would notify of this on our website, so please follow our website for up-to-date announcements and information regarding this process.

The Summer Villages of Rochon Sands and White Sands both registered disputes with the County of Stetter regarding the proposed Paradise Shores development, triggering the County to enter the dispute resolution process, as outlined in the Buffalo Lake South Shore Intermunicipal Development Plan, with the Summer Villages.

ROCHON SANDS HEIGHTS SOUTH SHORE COMMUNITY ASSOCIATION

HAVE YOUR SAY IN SOUTH SHORE COMMUNITY PROJECTS

Do you have property at Rochon Sands Heights on Buffalo Lake, formerly known as Rochon Sands, Old Bolin, and Buffalo View Estates?

The South Shore Community Association represents **YOU**. The South Shore Community is wanting to establish a means of communication and obtaining feedback from all of their residents.

It's convenient and inexpensive to become a member.

It's \$5.00 per membership with a maximum of two memberships per household.

You can pay this to them yearly, every 2 years or 5 years. (They said they would even let you pay for the next 10 years).

You can make payments to them through e-transfers, cheque or cash.

Send e-transfers to: southshorecommunityassociation@gmail.com

Include: First and last names of the members
 Lot number/address at the lake
 Phone number/e-mail so that you maybe added and kept in the loop.

Prefer to mail it? Please send it to:
South Shore Community Association
PO Box 345
Erskine, Alberta
T0C 1G0

**Community Association Annual General Meeting on July 7, 2018
11:00 am
139 Bay View Street**

Remember, you must be a Community Association Member to vote. Questions about membership can be directed to: Graham Adamson – President 780-888-1039 or adamsong@telus.net or to Julie Ruttan – Vice President at 403-650-8275 or email jruttan@shaw.ca.



STETTTLER HISTORY BOOK INVITING SUBMISSIONS

The Stettler History Book Committee is inviting submissions for individuals or families who have lived in Stettler in the past or are currently living in Stettler. They are also including Buffalo Lake residents or others in the County of Stettler who do not have biographies in other local history books.

Please pass this information along to friends and family who have been an important part of the history of Stettler. Perhaps you could copy and share a hard copy for the seniors who may not have/use internet.

Please help to spread the word.

The History Book of Stettler is a volunteer venture being undertaken by a group of local people interested in preserving the history of this community. Over the next few months, members of the group will be gathering stories and family histories of the people of our community. We hope to compile a fairly thorough record of Stettler, its history, and the people who made it the community we all know and love.

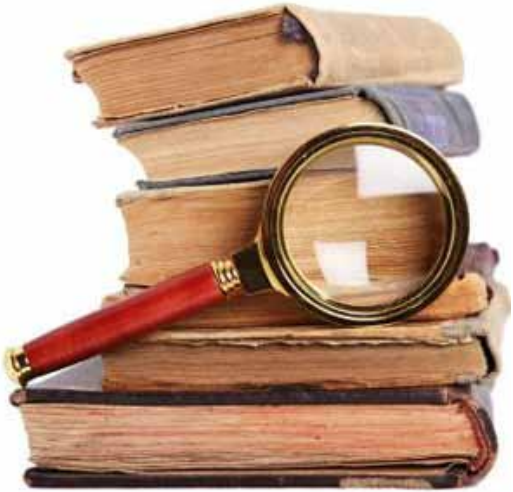
Since the group of volunteers who are attempting to create this historical reference, have yet to receive any form of funding, Our Town Stettler, is pleased to host our page on their site, and avoid the group having to pay the up front costs to operate their own page at this time. This page

will be used as a jumping point if, and when the committee gets their own website at a later date.

At this time we are still looking for people who are able to help in some way. We would, of course, love for any contributions you can make, however if you would like to help with the compilation of the book, please let us know.

Below are links that will take you to the three different submission we have available right now. There is a personal submission form, a business submission form, and a residential submission form. We invite you to fill out which ever forms apply to you. Once you have submitted one form, you will be brought back to this page, where you can go to the next form, if you so choose. Please note that the questions are as general as we can get at this time. If there is something you would like to tell us, please feel free to add it into one of the appropriate text fields. Also, if you have any questions or concerns, you can reach our group at stettlerhistorybook@gmail.com and we will get back to you as quickly as we can on the matter.

None of our forms are set to take information in a particular way. All the answers are voluntary, and you will not be brought back to the form if you leave some of them blank for any reason. If you submit your form and feel you had left something/someone out please email us, with



your first, and last name at the top of the email so our volunteers can find the appropriate entry to add the information to. Also, several of the text fields have suggestions for the sort of information we are looking for, however you are certainly not limited to just what is suggested in the fields, and we welcome any points/facts/stories you wish to submit.

SUBMISSION FORMS:

Listed below are links that will take you to each of our online submission forms. Please note, if you have digital photos you would like to submit, please send them via email and don't forget to include your name, and email in the message, so we can match them up accordingly.

PERSONAL INFORMATION

Family/connection to the area.
<http://www.ourtownstettler.ca/submission.html>

BUSINESS INFORMATION

Do you own a business? Tell us about it!
<http://www.ourtownstettler.ca/businesssubmission.html>

RESIDENTIAL INFORMATION

Let us know about your home sweet home.
<http://www.ourtownstettler.ca/homesubmission.html>

Please be sure to leave your contact information as well for any questions/discrepancies we may wish to clear up before going to print. Due to space, and cost, some histories may be abbreviated, we will attempt to ensure your approval on modified submissions.

*Please make sure to let us know if any photos you submit are to be returned to you or not.

CONTACT OUR GROUP:

You can also submit your information in the following ways:

- Physical Drop Off at 5004-47 St. Stettler - the old Atco Electric office

Questions or submissions can also be sent to any of the following.

- Email: stettlerhistorybook@gmail.com
- Facebook: "Stettler History Book"
- Website: <http://www.ourtownstettler.ca/historybook.html>
- Mail: Box 1437, Stettler, AB T0C 2L0
- Phone: Tammy Menard 403-742-0584
Stan Eichorn 403-742-4703

Save a Tree

Sign up for e-versions of County Connection magazine by contacting nthorsteinsson@stettlercounty.ca or by calling 403-742-4441.

It's also available on our website at www.stettlercounty.ca.



Mattress Recycling

at the Stettler Transfer Site



Thank you to the following generous donors for making the set-up of our mattress recycling program possible:

Superfluity Shop
Wells Furniture
Stettler IODE
Stettler Kinettes
TransCanada Corporation
White Sands Hall Assoc.

What is accepted?

Mattresses
 Box springs
 Electric beds
 Foam mattresses
 Futons
 Foam underlay
 Mattresses must be dry and free of dirt/mud.

The mattresses are sent to Re-Matt in Calgary where the mattress or box spring is dismantled into its raw materials (wood, foam, felt, metal, etc.) which are sent to local Alberta manufacturers to be made into new products. www.re-matt.com

COMMUNITY EVENTS



Canada Day Celebrations!

Join the Stettler Town and Country Museum for their Annual Canada Day Celebration!

Sunday, July 1, 2018

15th Annual Wade Buchwitz Memorial Gymkhana

Sunday, July 1, 2018

10:00 AM Start

Endiang Roping & Riding Club Outdoor Arena
Endiang, AB



Stettler District Ag Society

- Horse Show: Saturday, June 16 starting at 9 AM
- Woody's Saddle Barrel Series: Every Thursday
June 21-August 9: Draws at 4 PM and 7 PM

COMMUNITY EVENTS

Don't Dump in our Ditches

Recently there has been increased incidents of dumping garbage and ashes in our ditches - just outside of our transfer stations. Please respect our environment. Check transfer site hours of operation at www.stettlercounty.ca

Farmer's Market

Every Tuesday beginning June 5 through October 2
9:00 a.m. - 1:00 p.m.
Stettler Agriplex



STETTLER

Taste of the Heartland

July 21, 2018

Full day bus tour and long table dinner experience.

Tickets available at
www.tasteoftheheartland.ca

\$100

(includes both tours)

Spend the day with us!



Public Mail Agreement #41398593
Return Undeliverable Canadian Addresses to:
County of Stettler No. 6
Box 1270
Stettler, AB T0C 2L0