

Summer 2021

Stettler County Connection

2021 TAX NOTICES

TAXES DUE OCTOBER 29

inside cover

GIVING OUR FIREFIGHTERS

THE GREEN LIGHT

pg 14

South Shore

Area

Structure Plan

pg 16



Deadline to make your 2021 Tax Payment without penalty, is Friday, October 29.

2021 TAX NOTICES

Payment is due Friday, October 29, 2021.

The Property Tax and Assessment Notices have been mailed. If you do not receive yours by July 15, please contact the County of Stettler.

The County of Stettler 2021 Tax Payment Deadline is Friday, October 29, 2021 (the last working day in October).

Methods of Payment can be made:

- Cash
- Cheque
- Interac
- Online Banking
(Please choose 'Tax' and use Roll Number or Customer ID)
- At most financial institutions

Another method of payment to consider is ONLINE BANKING PRE-AUTHORIZED – Autopay, our Tax Installment Payment Program (TIPP). This program spreads tax payments out over 12 months.

In order to qualify for the TIPPS program, your taxes have to be at a zero balance. Application forms must be received prior to December 15 if possible. This is a payment we process monthly and it is automatically withdrawn from your bank account. The amount of your tax payment is determined from your previous years taxes. For example, a tax bill of \$1,200 would be divided by 12 payments of \$100 per month. The payment of

\$100 would begin in January and continue until the current year's taxes are levied. The balance of the year would be recalculated to equal what is left owing, to come to a zero balance at the end of the year. We typically try to take payments on the first of each month. If you happen to miss two payments, you will be taken off the TIPPS program. Please contact our office for an application.

Tax payments continue to be collected at the County Administration Building at 6602 – 44 Avenue, Stettler, Alberta. Due to Covid-19 we are restricted to having two ratepayers in our foyer at a time. If you are able to pay by one of the remote payment methods it would be appreciated and help with line-ups and wait times.

For more information please contact our office 403-742-4441. We are in the process of collecting taxpayer information for sending tax/assessment notices by electronic means. If you are interested in receiving your tax notices by email, we require the following information:

Roll and legal descriptions of property

Name
Address
Town, Province, Postal Code
Phone number email address

Send the above information to tax@stettlercounty.ca or call 403-742-4441.



06



08



14

03 REEVE'S RAMBLINGS
Municipal budgeting.

05 STETTLER WELLNESS
Community Connections Survey.

06 2021 TAX RATE BYLAW
Tax notices have been mailed.

08 SERVICES OFFERED
Grading to dust reduction services.

09 RENTING PASTURE
Grazing on County of Stettler lands.

10 AGRICULTURAL SERVICES
Rental equipment and services offered.

12 ADVOCACY AND BYLAWS
Seeking support with rural crime.

14 STETTLER REGIONAL FIRE
Giving firefighters the green light.

15 STAIR CLIMB
Firefighters take virtual stair climb challenge.

18 COMMUNITY PARTNERS
G3 - a great neighbor.

20 NEW RULES FOR RV USERS
Temporary permits required.

22 2022 BUDGET SURVEY
Give us your input on our Municipal Budget.

24 WEED OF THE MONTH
Baby's Breath.

25 NOMINATIONS ARE OPEN
Consider running for County Council.



COUNTY CONNECTION

INTRO

“Don’t hurry, don’t worry. And be sure to smell the flowers along the way.”

-Walter Hagen

County forces are as busy as ever this spring with mowing, roadside mowing, weed spraying and ‘good weather’ projects now in full swing. Our Planning & Development department is also hopping with many residents seeking development permits in 2021. It’s great to see projects on the go and improvements being made all over our County.

We were very excited to welcome our seasonal staff back this spring after having to cancel almost all seasonal hires in 2020 due to COVID. It’s an exciting time as we meet the new summer students and staff and see projects and maintenance ramp up to full steam ahead.

We’ve recently heard from the premier that Alberta is ‘open for summer’ and I know we are all anxious and hopeful for this to be true.

Asking everyone this summer, to please slow down and yield to our farming community and their equipment as they make the most of the sunshine and longer days. If we have learned anything over the past year I think it is that we need to slow down and appreciate all the ‘little opportunities’ that life throws our way - especially a slow drive through our beautiful county. You might even find time to stop and snap a photo for our 2021 Photo Contest.

Niki Thorsteinsson
Director of Communications

Stettler County Connection

Summer 2021

Volume 11 Issue 2

Editor-in-Chief

Yvette Cassidy

Managing Editor

Niki Thorsteinsson

Printed by

Kathy’s Printing Service

All Rights reserved. Any reproduction of the contents without written authorization from the publisher is strictly prohibited. The publisher cannot be held responsible for any errors or omissions found within this newsmagazine, or for loss of, or damage to, unsolicited material submitted by readers.

Availability: Current Issues of County Connection can be obtained from the County of Stettler Administration Building while supplies last.

Subscription: County Connections is delivered free of charge to taxpayers, with exception to those who do not live in the Province of Alberta or have unsubscribed from our mailing list. If you wish to receive future copies, please make the request to the Managing Editor at nthorsteinsson@stettlercounty.ca. You may also view the current and back issues of the County Connection on our website at www.stettlercounty.ca.





Reeve Larry Clarke raises the Multiple Sclerosis Society of Canada flag on May 25 to help bring awareness and support to our region. World MS Day was May 30.

REEVE'S RAMBLINGS

As I look out the window and the thermometer on May 31 is 23 degrees Celsius, it certainly feels like summer. The week's weather shows the new growing season with crops and gardens in and bedding out plants being planted in hopes we don't have another night with Jack Frost. This is very similar to what we see as we watch the news unfold on the Covid crisis, with kids back to school and this week easing some restrictions allowing Albertans to more services and getting more folks back to work.

Winter 2021 Reeves ramblings had shown our county would have a tough budget year based on several key points of decreased funding including non-payment of taxes by some oil companies, reduction in MSI funding and Alberta government industrial assessments including oil and gas properties. I explained in the winter issue how much we would have to increase mill rates in each assessment category to meet the past years' level of service provided for residents in the County of Stettler. I also stated we operate on approximately \$9.8 million dollars (calculated by deducting bad debt) per year, although we collect approximately \$18 million dollars per year which includes school requisitions, senior housing requisitions, recreational funding and the newly introduced police funding which are all collected

by the municipality with funds being forwarded to the Alberta Government for their spending on these programs. We are basically a bank for the Government submitting these even if we have not been able to collect any of the taxes on these properties.

If there are any questions or clarification please contact the County office and we will be glad to explain these requisitions and taxes in further detail as these numbers are all indicated in our yearly budgets.

This year's early budget predictions were gloomy, but 2021 has turned out to be a promising budget with the fruits of labour of County staff and Councillors paying off big time in our lobbying of the government to change certain decisions, such as the re-assessment of oil and gas properties and collection of unpaid taxes. Also, CAO Cassidy's staff have worked with legal and oil and gas companies and have established tax payment plans to greatly reduce this huge revenue loss to County of Stettler rate payers.

Tax increases were held to zero except for agriculture. Agriculture was increased by 2% with this revenue being directed to agriculture programs and services. The 2021 fee bylaw

continued...

4



REEVE'S RAMBLINGS CONTINUED...

shows the reduction in service fees and rentals of equipment affecting agriculture operations and when budget cuts were discussed for 2021 some agriculture programs were to be cut hard. A 2% increase protects these programs and services in such an important sector of our county. **A 2% increase to farmland tax equates to an increase of \$5-\$15 per quarter section of land, depending on the assessed value of that quarter.**

The 2020 surplus of \$2.38 million is in reserves to help buffer any reduction in 2022 in Municipal Sustainable Initiative (MSI) and overall grant funding. The County of Stettler has acquired several high-quality gravel reserves in and adjacent to our county ensuring top quality gravel for use on County roads well into the future.

As we all know, budgeting can be very time consuming looking at past results and future predictions and funding models. Staff will continue to give the best estimates they can while focusing on all categories to ensure residents are receiving the expected level of service in the most efficient manner. We will be putting out a budget survey in

June and July, requesting your input into services for next year's budget.

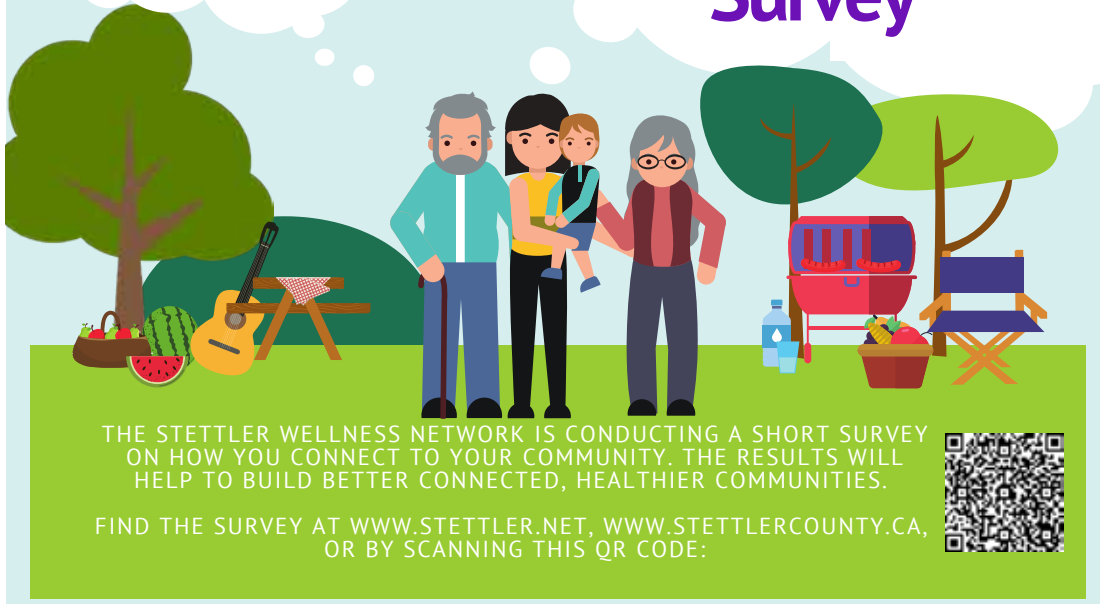
Be safe in all summer activities, please practice the required social distancing to prevent the spread of this terrible virus. As stated before please treat County of Stettler staff, Emergency Services, all of our wonderful business frontline workers and school staff with respect, as you would your neighbours. They are trying their best to deliver on decisions made by Council, boards, owners and government, and they are your neighbours.

As always please watch the roads as they are busy with construction and agricultural units.

Larry Clarke, REEVE



Community Connection Survey



THE STETTLER WELLNESS NETWORK IS CONDUCTING A SHORT SURVEY ON HOW YOU CONNECT TO YOUR COMMUNITY. THE RESULTS WILL HELP TO BUILD BETTER CONNECTED, HEALTHIER COMMUNITIES.

FIND THE SURVEY AT WWW.STETTLER.NET, WWW.STETTLERCOUNTY.CA, OR BY SCANNING THIS QR CODE:



5

COMMUNITY

STETTLER WELLNESS NETWORK: SURVEY

The **Stettler Wellness Network** is a gathering and collaboration of like-minded citizens, service providers, not-for-profit organizations and volunteers working towards a common vision which is to:

Establish an increased sense of community for residents of Stettler and Stettler County through social connection and participation in community initiatives.

The Stettler Wellness Committee would like to know more about your connectivity to the

community. Please take a few minutes to complete their survey.

Find the survey through a link on our website at www.stettlercounty.ca, or scan the QR code above and it will take you to the survey directly.

If you prefer to complete your survey on paper, you may print off a copy, complete and return it to the Town of Stettler, Parks & Leisure Services. If you need a paper copy call us at 403-742-4441 to make arrangements.

6

**County of Stettler No. 6
Property Tax Breakdown**

2021 (Estimated)

2020

Total 2021 Property Taxes	17,647,499.00	17,650,278.00
Provincial Requisitions (collected and forwarded):		
School Taxes (Alberta Education)	3,796,221.00	4,146,220.00
Policing (Due to Province)	218,138.00	178,077.00
Designated Industrial Properties (Due to Province)	40,838.00	41,225.00
Town of Stettler Recreation (Due to Town of Stettler)	435,275.00	431,282.00
County of Stettler Housing Authority (Senior's Housing)	634,980.00	657,245.00
Bad Debts (Unpaid Taxes)	5,000.00	2,000,000.00
	<u>5,130,452.00</u>	<u>7,454,049.00</u>

Total Property Taxes after Provincial Requisitions are remitted:	12,517,047.00	10,196,229.00
--	---------------	---------------

Municipal Requisitions		
Stettler Waste Management Authority	361,790.00	361,790.00
County Recreation	100,000.00	100,000.00
	<u>461,790.00</u>	<u>461,790.00</u>

County of Stettler's Tax Dollars to work with:	\$ 12,055,257.00	\$ 9,734,439.00
--	------------------	-----------------

COUNCIL SETS 2021 TAX RATE BYLAW

Tax Notices have been mailed with taxes due Friday, October 29, 2021

Council for the County of Stettler No. 6 set the Tax Rate Bylaw at the May 12, 2021 Regular Council Meeting, holding Residential, Non-Residential and Machinery & Equipment to a 0% increase, and issuing a 2% increase in taxes to Farmland. The total funds collected from this increase, \$32,529, earmarked to support Agricultural Services.

A 2% increase to Farmland Taxes would equate to between \$5 and \$15/Quarter Section, based on the assessed value of the parcel of land.

A dire picture was predicted for the County's 2020 finances when the province undertook a review of how oil and gas properties were assessed, and Administration predicted a further \$2 million in unpaid oil and gas taxes.

"We were one of the first municipalities to forecast, prepare for and anticipate not only the impacts of

the pandemic but also a further downturn in the economy in relation to oil and gas. Fortunately, while we predicted a \$2 million shortfall due to unpaid oil and gas property taxes, the actual uncollectable turned out to be \$1.5 million," said Reeve for the County of Stettler, Larry Clarke.

County Council and administration made an unprecedented move in 2020, protesting on the steps of Alberta's Legislature in opposition to proposed changes to the way the province assesses oil and gas properties. "We are fortunate that our voices were heard, and the province has 'paused' further changes with this review for now. The results of that review, had they gone ahead, would have been devastating to our municipality," added Reeve Clarke.

A further combination in 2020 of cancelled or deferred projects, a reduction in services including chemical spraying and roadside mowing, a hold on hiring summer staff due to the pandemic, a reduction of overtime for field staff, and holding salaries, resulted in a \$2.38 million surplus for the County.



“The surplus is a welcome result for our municipality following a year of stress and uncertainty,” said CAO Yvette Cassidy. “It demonstrates prudent planning and good decision making by this Council and administration. We certainly don’t want to see a giant surplus in a normal year, or every year, because that would mean we’re asking for more money than what we need to operate. But with a global pandemic dramatically affecting our operations and projects, and prudent foreshadowing by administration, I think this was a very reasonable result,” added Cassidy.

The County of Stettler received \$750,000 in stimulus funding from Alberta Transportation to replace six bridges/bridge-sized culverts, which had reached end-of life, with new bridge-sized culverts. Alberta Transportation also completed secondary highway improvements to Highway 855, which Council has lobbied for over the last 10 years. We received the Municipal Operating Support Transfer (MOST) grant funding of \$568,608 which was used to cover unpaid taxes and upgrade municipal facilities into Covid

compliance, and to purchase a generator to further prepare for Emergency Management operations to be carried out at the Public Works Facility. The County of Stettler manages the Stettler Regional Emergency Management Agency for our region. The County also received \$661,625 in Federal Stimulus funding which will be used to maintain and upgrade the Fenn Road in 2021.

The \$2.38 million budget surplus from 2020 has been allocated to reserves as the County prepares to absorb a 25% reduction in Municipal Sustainable Initiative (MSI) funding over the next two years. This MSI reduction in funding was announced by the province in 2021.

“Municipalities continue to face many challenges ahead, and we will continue to prepare and plan for the worst, always hoping for the best, with our key concern being to maintain a responsible budget and to provide for long term viability for our municipality,” added CAO Cassidy.



PUBLIC WORKS SERVICES

A hold harmless agreement, followed by the applicable fees are required prior to the following services.

Grading Laneways ~ having your laneway graded will require a signed agreement with the County of Stettler No. 6 as well as payment of \$50.00 per quarter mile. This is a one time service. A new agreement will be required each time grading is requested. This service is offered from spring to fall on a request basis.

Snowplow Laneways ~ a completed agreement and approved inspection will be required prior to snow removal. An administrative fee of \$100.00 is charged per address, each season. In order to ensure timely service (in the event of an early snowfall) application deadline is September 30 of each year. Late applications will be processed, however there may be a delay in service due to inspection scheduling once the snow starts to fly and our inspection people are busy running snow removal equipment, or a service refusal if the laneway is snow covered and not able to be properly inspected.

Dust Reduction ~ if dust reduction is desired, participation in the County offered program is required. Landowners are not permitted to apply any form of dust reduction products to County roads. Products currently offered are Calcium, CleanTRACK (trial product), and the DL10 Special. Product chosen and length of road requested will determine cost. Application deadline is April 15 of each year. Watch for advertisements on the County website and local newspapers.

Mowing Road Slopes ~ we offer the opportunity for landowners to mow roadside ditches or road allowances for haying. Haying is to be completed and all bales removed by September 1 of the year the hay was cut. Agreements and consent from adjacent landowners must be received in writing by June 15 of each year. Haying may not be done if the possibility of damage to the road slopes or shoulders may occur.

Please contact the County of Stettler at 403-742-4441 for further details, questions or to prepare your hold harmless agreement.



RENTING OUR PASTURES FOR **GRAZING**

Grazing Cash Lease Agreements

Each year the County of Stettler No. 6 leases agricultural land to ratepayers for cattle to graze, through a tendering process. Each of the parcels for lease have allotted acres designated for grazing.

The lease of these lands, once awarded, are typically in effect for five years and must be paid for annually, by or before July 1 each year. Locations for rent are throughout the County.

This agreement will allow the tenant access for grazing from July 1 to October 1 of each year. The lessee will not overgraze or damage the land and is also responsible for weed control and annual taxes. There are stocking rates set to prevent overgrazing. The lessee agrees they will not sublet this property, that they are 18 years or older and that they are a resident of the County of Stettler.

Swath & Bale Cash Lease Agreements are also accessible on five year terms. You are able to bale your own hay on County property as a tenant, on one parcel of land for a term commencing on August 1 and typically ending October 1.

Other agricultural equipment rentals available through Agricultural Services include:

- cattle scale
- grain bag roller
- magpie traps
- mulch applicator
- skunk traps
- noise cannons
- forage probe
- Godwin pump, hose and hose trailer
- tree planter
- age verification program
- backpack sprayers
- tag reader program
- skid mount sprayer
- field sprayer

Services offered:

- beaver dam removal
- lot mowing
- inspections (pest/weed etc.)
- weed picking labourer
- weed inspector spraying
- UTV private land spraying

See page 10 for more information. Please call us at 403-742-4441 for availability, pricing and questions.



RENTALS & SERVICES YOUR **AG SERVICES**

In May of 2021, Council amended the fee bylaw, reducing and eliminating many fees for Ag Rental Equipment, in support of Stettler County's Agricultural Industry.

Rental Equipment (Agriculture Use Only)

- Backpack Sprayers \$150.00 deposit
no charge
Late Charges: \$150.00/day after 3rd day
- Skid Mount Sprayer \$250.00 deposit
no charge
Late Charges: \$250.00/day after 3rd day
- Field Sprayer \$250.00 deposit
no charge
Late Charges: \$250.00/day after 3rd day
- Godwin Pump, Hose and Hose Trailer \$250.00 deposit
\$50.00/day
Late Charges: \$250.00/day after 2nd day
- Forage Probe \$50.00 deposit
Late Charges: \$50.00/day after 2nd day unless otherwise agreed upon
- Grain bag roller
no charge, by appointment only
- Mulch applicator \$100.00 deposit
no charge
Late Charges: \$100.00/day after 3rd day

Spraying/Weed Control

- Weed Inspector \$15.00/hour + chemical
- UTV Private Land Spraying (Ratepayer) \$20.00/hour + chemical
- Weed Picking Labourer \$15.00/hour
- Lot Mowing \$100.00/hour + mileage from yard
- Mobilization Fee \$500 (weed notice compliance only)

Trees

- Tree Planter \$25.00/site visit



- Commercial Use \$500.00 deposit and \$100.00/day
- Freight for tree delivery free of charge (ASB pays freight)

Traps

- Skunk \$100.00 deposit
\$15.00/week

Late Charges: \$50/week after 2nd week

- Magpie \$100.00 deposit
\$15.00/week

Late Charges: \$50/week after 2nd week

Cattle Scale

- \$100.00 deposit
no charge

Late Charges: \$100.00/day after 2nd day

Other

- Age Verification Program - entering information \$20.00
- Tag Reader Program \$10.00/3 days

Late Charges: \$100/day after 3rd day

- Beaver Dam Removal
no charge - by appointment only
(first come first serve)
- Noise Cannons
\$200.00 deposit per cannon
\$20.00/week per cannon

Ratepayer provides their own propane tank and propane

- Inspections for Municipalities \$65.00/hour + mileage

(pest, weed or other inspections) (includes administration time)

For inquiries or to book rentals or service please call 403-742-4441 or email asb@stettlercounty.ca. To review the amended complete Fee Bylaw, visit www.stettlercounty.ca.



ADVOCACY & BYLAW UPDATES

In April, Council for the County of Stettler forwarded the following letter to Alberta's Minister of Justice, Kaycee Madu, seeking assistance and support to make positive changes to our Criminal Code:

The Criminal Code is Failing Rural Albertans

Councillor Les Stulberg connected with you mid-March during the Bear Pit Session at the Spring Rural Municipalities of Alberta Conference, regarding Rural Crime and how the 'catch and release' program is not working for our citizens in rural Alberta who struggling daily to protect their property and properties in East Central Alberta. On April 14, our Council made a motion to officially request your assistance.

To refresh, we have multiple repeat offenders operating and calling Stettler County 'home'. These offenders are widely known to terrorize our citizens through thefts of vehicles, property and parts on a daily basis. Beyond the thefts, they are causing safety issues on our private

property and on our roads as they engage in reckless driving with stolen property throughout our hamlets, villages and rural roadways. Reports indicate they are often heavily under the influence of drugs, alcohol or both.

The RCMP are doing an exemplary job of catching these criminals, only to find themselves chasing the same perpetrators again, often within 24 hours.

We are all frustrated beyond belief, and conclude that the Criminal Code is failing rural Albertans.

While you informed us in March, that it is in fact the Federal Criminal Code that is failing us, we must look to you, our provincial representatives to lead and guide us through the proper avenues and channels to find relief and resolution. We have grave concerns for the safety of our citizens and their children.

If our Criminal Code is failing to keep dangerous re-offenders off our streets and out of our homes, shops and vehicles, then on behalf of



our citizens we submit that change needs to be made.

We respectfully request your advocacy and direction on how we can begin to make positive changes and adjustments to the Criminal Code, for the safety and well-being of our rural communities.

Council will continue to follow up and seek change on this matter.

Bylaws

The following bylaws were passed by Council and are available for viewing at www.StettlerCounty.ca

- Bylaw 1655-21 - Community Aggregate Payment (CAP) Levy amendments
- Bylaw 1656-21 - Merger of Gadsby & County Land Use Bylaw
- Bylaw 1657-21 - Add Motel, Hotel, Hostel,

Special Dwelling Unit as discretionary uses to the Recreation Facility District

- Bylaw 1658-21 - Amend Land Use Bylaw to amend Recreational Vehicle Uses (further explained on page 20).
- Bylaw 1659-21 - Amend Land Use Bylaw to Rezone NW 9-39-19 W4 from Agricultural to Industrial
- Bylaw 1638-20 - Fee Bylaw - Updated fees charged in the County of Stettler



GIVING OUR FIREFIGHTERS THE GREEN LIGHT

Volunteer firefighters will now use flashing green lights to signal when en-route to an emergency.

The Town and County of Stettler are joining communities throughout Alberta to use flashing green lights to signify that a volunteer firefighter is traveling to the fire hall in response to an emergency call.

Volunteer firefighters must attend the fire hall from their home or places of work before responding to a call. In order to reduce the travel time needed to reach the hall, the Stettler Regional Fire Department will now use flashing green lights on the personal vehicles of volunteer firefighters to signal the driver's destination and request that anyone sharing the road pull over, if it is considered safe to do so.

Although yielding in courtesy is appreciated, other drivers are not required to forfeit right of way in response to the lights, in alignment with the Alberta Traffic Safety Act.

Green lights do not provide volunteer firefighters with special privileges on the roadway, and all rules of the road must be obeyed. The lights are placed on the dashboard or in the windshield of the volunteer's personal vehicle for consistent identification.

When yielding the right of way to a volunteer firefighter, please be sure to re-enter the roadway with caution as there may be additional firefighter vehicles following.

The Stettler Regional Fire Department thanks everyone for their cooperation in providing expedited emergency response. If you have any questions or concerns, please contact the Stettler Regional Fire Department at 403-742-2083.



STETTLER REGIONAL FIRE DEPARTMENT **STAIR CLIMB**

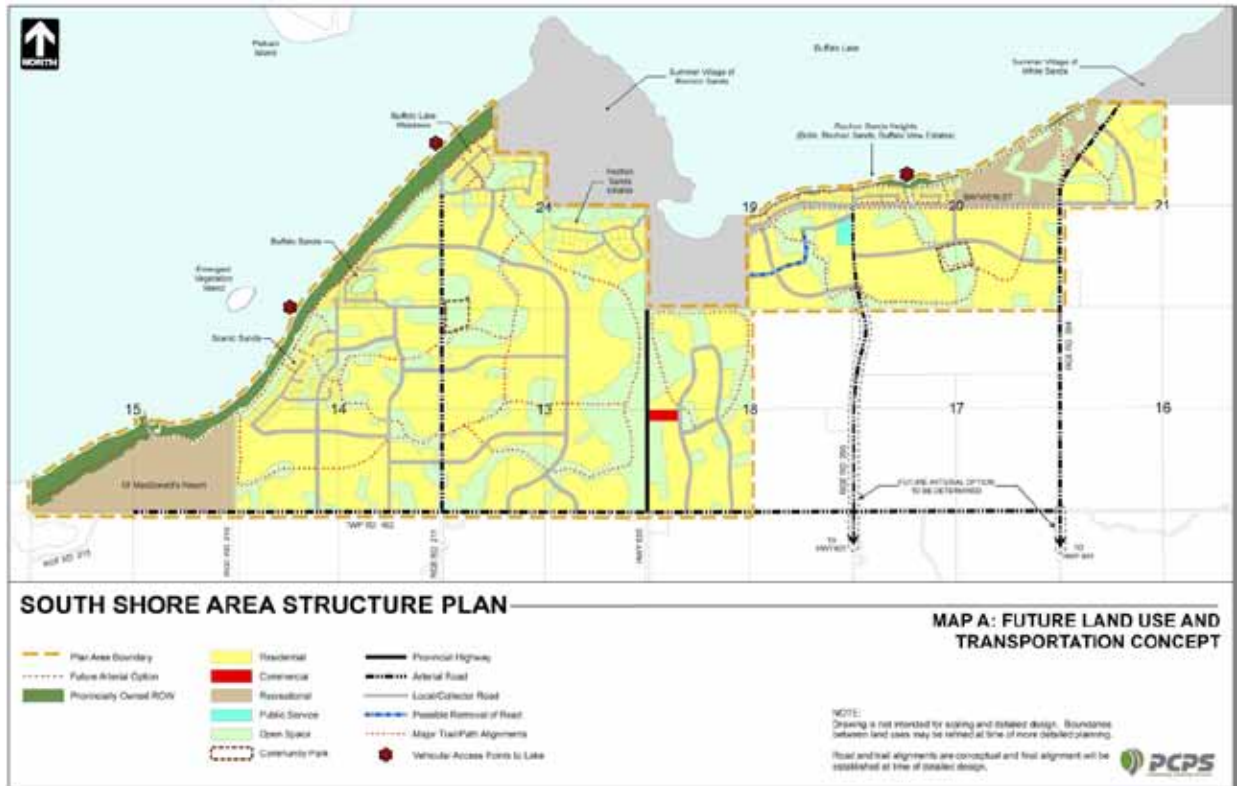
Since 2017, Stettler Regional Fire Department (SRFD) has been involved in the Calgary Firefighter STAIRCLIMB challenge. A fundraiser for the Wellspring Center.

Wellspring is an organization that provides assistance to all citizens fighting cancer and their families. Firefighters have an increased risk of cancer due to the often toxic gas and dangerous material encountered on the job.

SRFD is proud to be a part of this challenge every year. This year was a “virtual” climb instead of the usual 55 stories of the Bow Tower in Calgary, the highest elevation STAIRCLIMB challenge in the world: 775 vertical feet with roughly 70 lbs of gear. No easy feat. But these firefighters don’t back down from the task.

SRFD firefighters were granted access to the G3 Grain Terminal to complete their virtual climb this year. They would like to thank G3 for supporting their cause by providing a great set of stairs to climb.

For information about Wellspring please visit wellspring.ca or call 1-877-499-9904.



SOUTH SHORE AREA STRUCTURE PLAN

A plan to guide future development of County lands, along the south shore of Buffalo Lake.

The County of Stettler has found that the current Buffalo Lake South Shore Intermunicipal Development Plan (BLSSIDP) does not accommodate types of development that the County is prepared to see in this area. The approach taken for development density in the current plan does not adequately account for recreational forms of development like RV parks and campground resorts.

Agreement to change the current plan with the two other members of the BLSSIDP has not been achieved; therefore the County is in the process of mediating their withdrawal from the Buffalo Lake South Shore Intermunicipal Development Plan.

In withdrawing from the current Plan the County recognizes the need to have a replacement plan, and has developed the South Shore Area Structure Plan (SSASP) to guide the future development of the area, in a manner that satisfies the requirements of the larger, Buffalo Lake Intermunicipal Development Plan. The SSASP fulfills this role.

A South Shore Area Structure Plan is available for viewing at www.StettlerCounty.ca.

The SSASP is meant to replace the Buffalo Lake South Shore Intermunicipal Development Plan for lands that are within the County of Stettler on the south shore of Buffalo Lake. The area that is covered by the Draft Plan is shown in the map above.

Council and staff presented the SSASP to the public in April and May. A presentation of the



SSASP is available for viewing on the Stettler County You Tube Channel, (youtube.com/user/StettlerCounty) as well as recordings of public engagement sessions. Due to COVID-19, all public engagement was conducted through ZOOM to manage social distancing expectations.

The deadline to submit initial feedback on the draft SSASP was May 17. Council has reviewed all feedback received. Council's suggested amendments derived from conducting public consultation have now been included in the draft SSASP, and Council will be considering first reading of the South Shore Area Structure Plan on June 9, 2021 at their Regular Council Meeting.

If first reading of the SSASP passes through a vote of Council, a Public Hearing will be scheduled for the next Regular Council Meeting which is scheduled to be held on July 14, 2021.

Written submissions 'in favour of' or 'opposed to' the SSASP can be made prior to the public hearing. Please check with Planning & Development regarding deadlines for written submissions by emailing jdonovan@stettlercounty.ca.

Verbal submission 'in favour' or 'opposed to' the proposed SSASP can be made by joining the public hearing by teleconference. Please contact Planning & Development or watch our website.

18

COMMUNITY PARTNERS



Feb 24, 2021

County of Stettler No. 6
Box 1270
6602 - 44 Avenue
Stettler, AB T0C 2L0

Attention: Jacinta Donovan

Dear Jacinta

Thank you and all your colleagues for the generous support you provided to our grain elevator development near Erskine. G3 has undertaken six similar projects in Alberta over the last few years. Your County really stood out. I truly appreciate and admire your professionalism. We felt welcomed and assisted in every possible way. At the same time, I could see the dedication to the interests of the residents of your County.

G3 is very fortunate to have joined your community. We pledge to continue to be good neighbours and partners as we grow into the future.

Warmest Regards,

G3 Canada Limited

A handwritten signature in blue ink, appearing to read 'M. Vanderpont'. The signature is fluid and cursive, with a large, sweeping flourish at the end.

Murray D. Vanderpont, P.Eng.

DEVELOPMENT SETBACKS

Please remember that you do not need a development permit from the County for any agricultural operation as long as any structures such as hay sheds, granaries, dugouts, livestock shelters and barns meet the 125 feet setback from the center line of the County road.

Shelterbelts must be set back 75 feet from the center line of the road. If you would like to vary from these setbacks for any agricultural operation, you would require a development permit.

You may need a license/permit from the Natural Resources Conservation Board if your agricultural operation includes a confined feeding operation (please call the NRCB at 1-340-5241).

If development is proposed along a provincial highway a Roadside Development Permit issued by Alberta Transportation is required. Please contact Alberta Transportation at 403-854-5550 or visit their website at <http://www.transportation.alberta.ca>.

For more information regarding development please contact the County's Planning & Development Department at 403-742-4441.

19

ZERO TOLERANCE

Please contact our Planning and Development Department when you start planning your development in order to ensure you obtain the required development permit and other approvals in good time. Anyone who intends to undertake a non-agricultural development in the County of Stettler No. 6 is required to first obtain a development permit from the County. This could also help you avoid any unforeseen expenses you may incur if your idea for your development does not comply with the County's policies and bylaws (e.g. yard setbacks, road upgrades, etc.), so you may make the necessary adjustments before you start digging or laying down concrete.

The County does not want to penalize anyone. Rather, we want to work with ratepayers to ensure the proper development approvals are issued in order to comply with municipal, provincial and federal regulations. The County's Fee Bylaw states a penalty of \$1,000 for residential developments and \$2,000 for commercial developments that are started without the benefit of a development permit.

The County of Stettler No. 6 has adopted a zero tolerance approach to persons who start construction without the benefit of a development permit. All relevant penalties required pursuant to the County's Fee Schedule and other actions under the Municipal Government Act (MGA) for such a contravention will be strictly imposed on anyone who fails to obtain a development permit prior to construction start. This information has been made widely available and no exceptions will be made.



RECREATIONAL VEHICLE AS A DWELLING UNIT

Council approved changes to the Land Use Bylaw at the May 12, 2021 Council Meeting affecting RV users (for temporary RV use) in Stettler County.

76.1 On any lot (developed or vacant) in any Land Use District a Recreational Vehicle, including one that is parked or stored on a developed lot pursuant to Section 75.2 may be used as a dwelling unit for a period not exceeding twenty one (21) consecutive days, at the expiry of which it must be removed from the property for a minimum of five consecutive days; pursuant to Section 25.1 a temporary development permit is required for such use. This includes a Recreational Vehicle owned and/or used by short-term guests of the landowner or dwelling unit occupant (e.g. long weekend guests), subject to parking for any and all towing unit(s) and any associated trailers (e.g. for a boat, ATV, Ski-doo, etc.) being accommodated on the subject parcel of land.

76.2 A maximum of two (2) Recreational Vehicles may be used pursuant to Section 76.1 upon issuance of a temporary development permit. Additional Recreational vehicles may be used for this purpose for a maximum of five

consecutive days and only with the Issuance of a temporary development permit. For each additional Recreational Vehicle a temporary permit and tag for placement in the Recreational Vehicle in a location visible from the street stating the dates that it will be parked on the lot must be obtained from the Development Officer.

76.3 The use of a Recreational Vehicle as a dwelling unit for a period exceeding twenty one (21) consecutive days is allowed only if 'Recreational Vehicle' is listed as a use in the Land Use District for the subject parcel and a development permit for such use has been issued by the Development Authority pursuant to the regulations of that District.

76.4 In addition to the regulations for Recreational Vehicles in a specific Land Use District the following regulations apply to the use of a Recreational Vehicle as a dwelling unit pursuant to Section 76.3.

a. The Development Authority shall be satisfied that the design, finish and appearance of a building, including a Recreational Vehicle, are compatible with the amenities and character of existing development in the surrounding area.

b. A Recreational Vehicle shall be no more than fifteen years old at the time of applying for a development permit to use it as a dwelling unit.



Planning & Development Services

Currently booking
1 week in advance.

BY APPOINTMENT ONLY

**Seeking a development or building permit?
Questions about subdividing?**

Due to high volumes of requests, these services are offered

BY APPOINTMENT ONLY.

Please call 403-742-4441.

If the Recreational Vehicle is older than fifteen years, photographs of the Recreational Vehicle to be placed on the lot shall be submitted with the development permit application to the Development Officer's satisfaction, and the application may be denied or a condition imposed to require its upgrading if the condition of the Recreational Vehicle is not to the satisfaction of the Development Authority.

c. Only one Recreational Vehicle per lot may be used as a dwelling unit pursuant to Section 75.3 except in Buffalo Lake Meadows (Plan 0521511 and Plan 0620721) where, despite anything to the contrary in this Land Use Bylaw, a maximum of two Recreational Vehicles per lot may be allowed at the discretion of the Development Authority. Further, subject to Section 68, only one development permit may be issued for a principal building that is a dwelling unit (i.e. either for a Recreational Vehicle or for a detached dwelling).

d. Pursuant to Section 8 a Recreational Vehicle includes a Recreational Vehicle - Park Model Trailer but does not include a Recreational Vehicle - Park Model Recreational Unit (also called a "Cottage Model").

e. Pursuant to Section 9 a Recreational Vehicle used as a dwelling unit is a building and all regulations specified in this District for a building also apply to a Recreational Vehicle, unless stated otherwise.

f. In the Rochon Sands Heights, Scenic Sands [on lots specified in Section 108.15 (c) (ii)] and Buffalo Lake Meadows subdivisions, additions to a

Recreational Vehicle shall be limited to a ground level deck.

g. Although being a discretionary use in the Rochon Sands Heights, Scenic Sands [on lots specified in Section 108.15 (c) (ii)] and Buffalo Lake Meadows subdivisions, notwithstanding anything to the contrary in this Bylaw the Development Officer may issue a development permit for the use of a Recreational Vehicle as a dwelling unit, but shall refer the application to the Municipal Planning Commission if the Development Officer recommends refusal of the development permit or for any other reason that the Development Officer deems it necessary.

h. When the Development Officer issues a development permit for the use of a Recreational Vehicle as a dwelling unit, an appeal period for affected landowners shall apply pursuant to Section 33.2.

i. The landowner of a parcel of land on which a Recreational Vehicle is illegally stored (refer to Section 74) or is placed to be used as a dwelling unit without the benefit of a development permit or on which a Recreational Vehicle was legally placed to be used as a dwelling unit with the benefit of a time limited development permit which has expired, may be liable to a fine or penalty pursuant to Section 38.1 provided for in the County's Fee Bylaw.

To apply for a temporary development permit (fees are waived for 2021), please visit our website at www.StettlerCounty.ca.



2022 BUDGET SURVEY

Deadline to complete our 2022 Budget Survey and submit your input is July 30. Visit www.StettlerCounty.ca for a link to the survey.

Each year we begin our budget planning in the spring with Corporate Services consulting with all departments to look at what was planned for the year before, where we are currently at, and what they anticipate is coming. We also look carefully at Council's 'Strategic Plan' which is workshopped annually by Council to set goals and determine the direction of our municipality. Staff use this direction to plan for the year, set priorities and to look ahead and save for anticipated future expenditures.

Council will begin workshopping their 2022-2025 Strategic Plan at the end of summer. But before that happens, we need to hear from you.

Please take a moment to complete our short annual Budget Survey. This survey will give you an opportunity to provide Council with your priorities.

While we always think our programs and services are the best and most efficient 'bang for your buck', we want to hear if you think something should be cancelled, altered, increased, or decreased, or if you envision an emerging trend and would like a new program to be considered.

In the end, setting the budget always comes down to dollars and cents. With your input, we hope to present Council with a true picture of what our citizens would like to see.

Thank you in advance for providing your valuable input.



23

SPECIAL PROJECT FUNDING: RECREATION

Recreational Special Project Funding was established in 2006 in order to set aside funds to help with the construction and/or enhancement of recreational facilities in order to serve the needs of the County's rural population outside of the Town of Stettler with the exception of properties owned by the Stettler Agricultural Society.

Some of the projects have included new siding, furnaces, flooring, windows, electrical and plumbing repairs for many halls and arenas along with the building of community playgrounds and baseball diamonds.

The maximum funding that is available this year is \$50,000.

The information booklet and application form are available at the front counter of the County of Stettler Administration Building and on our website www.StettlerCounty.ca. The deadline to apply is October 31, but applications are welcome at any time throughout the year.



WEED OF THE MONTH COMMON BABY'S BREATH

Common Baby's Breath (*Gypsophila paniculata*) is a less commonly known noxious weed. We see it in floral arrangements and flower shops daily, however Baby's Breath is an invasive plant and is often found downwind from cemeteries as it escapes these floral arrangements. Frequently thought of as a cute, delicate filler flower Baby's Breath could easily be described as a wolf in sheep's clothing.

The multiple tiny white flowers on this noxious weed can produce 10,000 seeds per plant, and allow it to push out native flora and take over the landscape. During times of drought, Baby's Breath is able to thrive by accessing water much deeper than most native plants, thereby killing them off and leaving more room for this invasive plant. Brought over with the settlers in the 1800's, it escaped people's gardens and has been infesting the landscape ever since.

This abundantly branched perennial grows to 1 meter in height. Seedling plants emerge in early spring and develop only one shoot the first year. Established plants have a deep (up to 4 meters), thick penetrating root system. Stems are smooth but covered in a waxy

coating, linear leaves are opposite, hairless, with a prominent midvein and grow 2 to 10 cm long. Stems are swollen at the nodes. Plants do not flower until the third year when flower buds develop. Inflorescence of numerous flowers in a large, diffusely branched, leafy-bracted, panicle-like cluster. Each flower has 5 white petals with rounded to somewhat notched edges. Inflorescence is hairless and calyx teeth are 1.5-2.0 mm long. Disperses seed as a "tumble" weed.

Floral arrangements and Baby's Breath should be disposed of properly in landfill-bound garbage where the seeds will be buried in anaerobic conditions and decompose.

Do not grow Baby's Breath, check wildflower mixes for this and other invasive plants before planting.

If you spot Common Baby's Breath, please contact your local Agricultural Fieldman.

**Consider being a
Municipal Councillor!**



Nomination Period _____

January 1, 2021 - NOON on September 20, 2021

Location of Local Jurisdiction Office
County of Stettler No. 6
6602-44 Avenue
Stettler, AB T0C 2L0
Phone: (403) 742-4441

Local Authorities Act
(Section 26)

Local Jurisdiction: **County of Stettler No. 6, Province of Alberta**

Notice is hereby given that the Nomination Period for the 2021 County of Stettler Municipal Election begins January 1, 2021 and ends at NOON on September 20, 2021. Nominations for the election of candidates for the following offices will be received at the location of the local jurisdiction office set out above, by appointment only.

Councillor	1	Byemoor Endiang	Ward 1
Councillor	1	Big Valley	Ward 2
Councillor	1	Botha Gadsby	Ward 3
Councillor	1	Stettler	Ward 4
Councillor	1	Erskine South Warden	Ward 5
Councillor	1	Erskine Buffalo Lake	Ward 6
Councillor	1	Donalda Red Willow	Ward 7

Nomination Forms and Councillor Information Packages are available on our website at www.StettlerCounty.ca. Click on Council/Elections/Running for Council.

You must make an appointment to submit your nomination papers. Contact Doreen Nixon, Returning Officer, at 587-799-1132 or email ro@stettlercounty.ca. A \$100 fee must be paid when submitting your nomination papers. Nominations will be accepted until Noon, September 20, 2021. No late applications will be accepted.

Nomination papers may be submitted BY APPOINTMENT ONLY with Doreen Nixon, at the County of Stettler Administration Building, 6602-44 Avenue, Stettler, AB.



LET THE SUMMER READING GAMES BEGIN

Are you looking for fun things to do with your children this summer? Are you worried about the impact of shutdowns and online learning on your child's language development and literacy? Why not sign up for the Summer Reading Club and fight the "summer slide", the tendency for students to lose some of the academic gains they made during the school year. Multiple studies have demonstrated that young engaged readers outperform their less engaged counterparts, and the summer is a great time to encourage your children to read for pleasure.

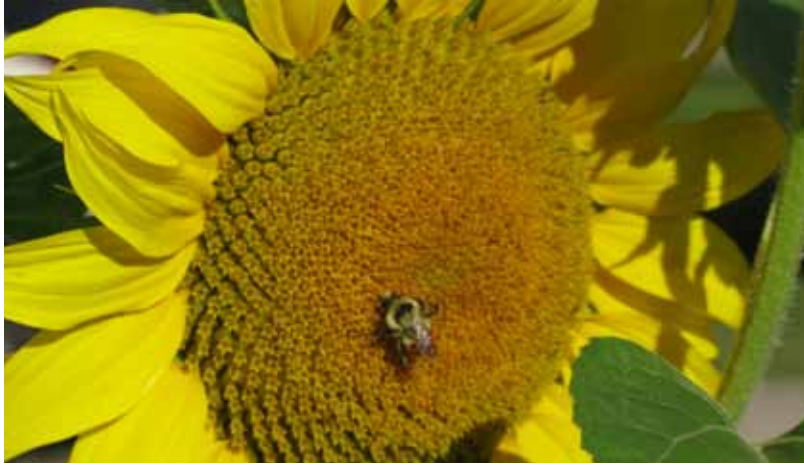
A recent column in the Globe and Mail noted, "for the children of the lockdown, literature represents more than an investment that could pay dividends, it means solace, escape, a little joy, a little company and a powerful reminder that our stories, too, can change". We can help keep your children in books, even your reluctant readers. Perhaps they just

haven't met the right book yet. We can suggest titles that other reluctant readers have devoured.

Our Summer Reading Club Coordinators, Megan, and Abby have started planning some fantastic programs and events. They will be joined by Reagan at the end of June when the Summer Reading Club kicks off. This year they have selected some pretty amazing prizes to encourage your children to participate, from a hoverboard to a laser tag set, to a telescope, LEGO, and more.

We have a range of prizes for each age category. If you would like to sponsor a prize for the summer reading club, check out our SRC adoption page at <https://spl.pr.l.ab.ca> or call us at 403-742-2292.

We can issue tax receipts for any donation over \$20. You can also get a jump on the summer by registering your children online.



This summer is not just for the kids, we will have great programs for all ages all summer long. This year we are launching an Adult Summer Reading Club too. That's right, read some great books and maybe win a fun prize to boot. Watch for upcoming programs and events on our website, Facebook page @StettlerPublicLibrary, or Instagram StettlerLibrary. You can also sign up to receive our monthly newsletter by email, just send a message to spl@prl.ab.ca to subscribe.

Membership at the Stettler Public Library is free to residents of Stettler and Stettler County thanks to the generous support of the Town and County Council. We can connect you with a world of stories and information, in person when we are allowed to open again, at the curbside until then, or entirely online via the e-Library. We are also able to help you with your printing, faxing, and scanning

needs as well as booking the computer room for your online course, work certification, or exam, call us at 403-742-2292 for more information.

Have you explored our e-library at <https://spl.prl.ab.ca/elibrary> lately? This spring we added Libby to the collection of resources available for you to use. Libby replaced RBDigital and contains e-books, e-audiobooks, magazines, and comics. You can also find e-books and e-audiobooks on CloudLibrary and magazines and newspapers on PressReader. Download the apps and get started now. If you need assistance signing up, call 403-742-2292, we'll help walk you through the process.

Save a Tree

Sign up for e-versions of County Connection magazine by contacting nthorsteinsson@stettlercounty.ca or by calling 403-742-4441.

It's also available on our website at www.stettlercounty.ca.



UPCYCLE CHALLENGE

Enter our Upcycle Challenge!

Take something old and make it into something new! Stettler Bucks prizes: 1st \$100, 2nd \$50, 3rd \$25.

To enter, send us two photos of your item, one with you and your item and one of just the item.

Tell us what it was originally and what it is now.

Email: stettlerbeautification@gmail.com

If you wish, we will offer your item for sale in an online auction.

All proceeds to Superfluity Store.

Deadline July 1.

Organized by the Heartland Beautification Committee.

Battery Recycling and Taping

We now recycle about **5000** household batteries per month!!

- Collection sites are at:
- the Stettler Eco Centre
 - all Transfer Sites
 - Sobeys
 - Sean's No Frills.



Taping of lithium and button batteries is required.

Tape positive end like this:

Use electrical tape or clear packing tape.

YES



Leave battery chemistry visible: lithium, alkaline, etc.

NO



Tape Button Batteries like this:

Use clear packing tape.



COMMUNITY EVENTS

2021 Stettler Pheasant Festival

*The hunt continues....
October 15-17, 2021*

Registration is OPEN!

www.stettlerpheasantfestival.com



2021 County of Stettler Photo Contest

2021 is an Election Year in the County of Stettler and we have decided to have a little friendly photography competition this year to discover 'the best and beautiful of our 7 Wards'.

Our photo contest is open from now until October 18, 2021 (election day). Maximum of 5 photos per person will be eligible. Photos must be taken in the County of Stettler to be considered for our prizes.

Upload your photos at www.stettlercounty.ca.

Questions?

Email us at info@stettlercounty.ca.



Public Mail Agreement #41398593
Return Undeliverable Canadian Addresses to:
County of Stettler No. 6
Box 1270
Stettler, AB T0C 2L0