

Stettler County **Connection**



2021 MUNICIPAL ELECTION

STETTLER COUNTY VOTES

pg 6-10

TAX PAYMENT DEADLINE

FRIDAY, OCTOBER 29

inside cover

**County
declares**

Ag Disaster

pg 14



The deadline to make your 2021 Tax Payment without penalty, is Friday, October 29.

DON'T MISS THE 2021 TAX DEADLINE

Payment is due Friday, October 29, 2021.

A reminder the County of Stettler 2021 Tax Payment Deadline is Friday, October 29, 2021 (the last working day in October). To avoid a 10% penalty, tax payments must be received by Friday, October 29, 2021. Our office closes at 4:30 PM.

Methods of Payment can be made:

- Cash
- Cheque
- Interac
- Online Banking
(Please choose 'Tax' and use Roll Number or Customer ID)
- At most financial institutions

Another method of payment to consider is ONLINE BANKING PRE-AUTHORIZED – Autopay, our Tax Installment Payment Program (TIPP). This program spreads tax payments out over 12 months.

In order to qualify for the TIPPS program, your taxes have to be at a zero balance. Application

forms must be received prior to December 15 if possible. This is a payment we process monthly and it is automatically withdrawn from your bank account. The amount of your tax payment is determined from your previous years taxes. For example, a tax bill of \$1,200 would be divided by 12 payments of \$100 per month. The payment of \$100 would begin in January and continue until the current year's taxes are levied. The balance of the year would be recalculated to equal what is left owing, to come to a zero balance at the end of the year. We typically try to take payments on the first of each month. If you happen to miss two payments, you will be taken off the TIPPS program. Please contact our office for an application.

Tax payments continue to be collected at the County Administration Building at 6602 – 44 Avenue, Stettler, Alberta. Covid-19 gathering restrictions are not currently in effect at time of publishing, but may apply by the tax deadline. Please visit our website for current information and any Covid-19 protocols, prior to attending our offices, and if possible, choose one of the remote methods to pay your taxes.



06



14



22

- 03 REEVE'S RAMBLINGS**
Council's past four years.
- 05 2021 PHOTO CONTEST**
Deadline: October 18.
- 06 STETTLER COUNTY VOTES**
Nominations close September 20 at noon.
- 07 DON'T FORGET TO VOTE**
Advance Vote and Election Day.
- 08 WHERE DO I VOTE?**
Election Day voting stations.
- 09 ELECTORAL BOUNDARIES**
Map of our 7 Wards.
- 10 VOTER IDENTIFICATION**
What you need to bring with you to vote.

- 11 ALBERTA CULTURE DAYS**
Stettler is a host celebration site.
- 12 RURAL WATER UPDATES**
Water to Rochon, repairs in Byemoor.
- 13 2021 PHEASANT FESTIVAL**
Tickets for hunts, smoker and banquet.
- 14 AGRICULTURAL DISASTER**
Supports available to ag producers.
- 17 SNOWPLOWING SERVICES?**
Deadline to apply - September 30.
- 22 1.5" GRAVEL**
Gravel road rejuvenation.
- 26 RETHINKING**
The Burning Barrel.

A child's life is flashing before your eyes.

Flashing red means stop!

COUNTY CONNECTION

INTRO

"Democracy is not a spectator sport, it's a participatory event. If we don't participate in it, it ceases to be a democracy."

-Michael Moore

Now is your time Stettler County! On October 18 the people of this County will install the governing body, our Council, for the next 4 year term in municipal government. And now is your time to shine. We hope you will all find a way to exercise your democratic right either by running for Council by submitting your nomination papers before Noon on September 20, or by showing up to vote either in the Advance Vote on October 14 and 15, by Special Ballot (contact your Returning Officer) or by coming out on Election Day and feeling the freedom and excitement of lining up with your peers and casting your ballot on Monday, October 18.

What we are hoping, is that we will see a voter turnout in our little corner of the province that breaks voter turnout records. People coming out to vote in numbers like never before. Because it is your right. You can. And it is literally what our ancestors fought for and died for. I will tell you how deflated we feel the day after an election, when we calculate how many people did not show up to vote. What a horrible extravagance to waste your rights.

I have personally visited, and for a short period lived in countries ran by dictatorships, and let me just share that once you've seen and felt the cold reality of what could have been, you would never, ever, ever take democracy for granted again. Get out and VOTE!



Niki Thorsteinsson, Director of Communications
Stettler County Connection | Fall 2021

Stettler County Connection

Fall 2021

Volume 11 Issue 3

Editor-in-Chief
Yvette Cassidy

Managing Editor
Niki Thorsteinsson

Printed by
Kathy's Printing Service

All Rights reserved. Any reproduction of the contents without written authorization from the publisher is strictly prohibited. The publisher cannot be held responsible for any errors or omissions found within this newsmagazine, or for loss of, or damage to, unsolicited material submitted by readers.

Availability: Current Issues of County Connection can be obtained from the County of Stettler Administration Building while supplies last.

Subscription: County Connections is delivered free of charge to taxpayers, with exception to those who do not live in the Province of Alberta or have unsubscribed from our mailing list. If you wish to receive future copies, please make the request to the Managing Editor at nthorsteinsson@stettlercounty.ca. You may also view the current and back issues of the County Connection on our website at www.stettlercounty.ca.





Grand Opening of the newly renovated Stettler Hospital and Care Centre Emergency Room held June 23, 2021.

REEVE'S RAMBLINGS

As I look out the window the thermometer on August 22 is 12C and there is a slight drizzle. Summer 2021 has certainly been another challenge to our agriculture producers with the shortage of rain resulting in the County of Stettler (COS) declaring an agricultural disaster due to the results of this drought. As producers push to harvest what is there for grain or livestock feed please understand the extra level of stress they are carrying this year.

This is the last reeves' ramblings in the 2017 to 2021 council term and as I look back on the past almost four years, there have been no shortage of challenges and learnings for Council. We set up a policy committee to review previous policies and to consider the development of any new required policies. These policies are written to ensure the rules outlined in the current Municipal Government Act (MGA) are adhered to, and the bylaws are written on how we as the COS will follow these rules. The policy committee reviewed many of the policies but then realized with the size and scope of many of these, we needed to review as an entire Council, through Committee of the Whole meetings, to have full input and discussion on these important documentations by all members of our Council. These documents are compared to other municipalities, reviewed by legal resources as required, public meetings are held if required, and then passed at one or more Council meetings. This ensures all affected parties have had a chance to be heard. Council reviews comments and concerns to see if any changes need to be made prior to the passing and implementation of these documents. The seven councillors representing all parts of our county are the ones voting on these, to ensure that the majority of COS ratepayers' interests are being properly

handled and that COS assets are maintained to ensure they are ready for now and the future.

The road network of the COS has approximately 38 km of pavement and 2300 km of maintained gravel roads, and 400 km machinery and undeveloped roads. Many of these roads were built when traffic was much lighter in volume and weight so require rebuilding or restructuring to ensure they will stand up to future loads. Council and staff have secured gravel supplies to ensure we have materials to maintain these roads well in to the 2100's, so our future generations will have access to this County on these assets.

The aggregate (CAP) levy has been introduced this term which is \$.40/ton. These funds are to be allocated to road maintenance. This is needed to help maintain these roads as taxes collected from a ¼ section with gravel pits is typically substantially less than a lease with shallow gas equipment and the associated pipeline. This levy falls within the MGA and is similar to many other municipalities. This levy is self-reporting and is undergoing audit in the near future to ensure compliance and proper recovery for COS rate payers. This, with properly planned and designated haul routes and conditions will help ensure our road integrity and minimize issues to adjacent home owners on these haul routes.

We also have several kilometers of roads in our original hamlets and now with the additions of the hamlets of Botha and Gadsby. In the past five years the demands on these services has escalated along with maintenance at the acreage and lake developments and are on a different schedule than other areas of the

continued...



The newly renovated Emergency Room and Waiting Area at Stettler Hospital and Care Centre.

REEVE'S RAMBLINGS CONTINUED...

county as the demographics of the county changes. An asset management plan was implemented in 2020, to ensure key equipment, materials and fixed assets are maintained and meet conditions based on a well thought out replacement plan.

The land use bylaw is a document that requires continuous review as it covers so many different types of development and is kept current. A major change to the land use bylaw was changes to Section 16 which now ensures any development going forward has to have all required approvals and conditions met and be shovel ready **prior** to any removal or moving of dirt. Changes are also made to this bylaw when villages turning to hamlets have their bylaws incorporated into our COS bylaws.

The COS has Intermunicipal Development Plans (IDP) and Inter Collaborative Frameworks (ICF). We have worked through the IDP's including participating in the mediation process with the Summer Villages of Rochon Sands and White Sands, the creation of the new South Shore Area Structure (SSASP) and withdrawing from the Buffalo Lake South Shore IDP. This IDP was outdated and required a major review with estimates being in the \$100,000.00 to \$150,000.00. The SSASP had thorough public input, engagement and hearings, with changes made prior to passing third reading to create a plan that will allow the COS to develop this area throughout the years to come working within the guidelines of the overriding Buffalo Lake IDP. The ICF's will be worked through ensuring the COS ratepayers interests are met.

Throughout the term, budgets were scrutinized and cuts were made to meet funding. Ten full-time positions were eliminated through adjustments and attrition totaling \$930,000.00 and 2020 seasonal staff was very limited due to the pandemic, but ratepayer concerns required these seasonal positions back in 2021 ensuring ratepayer expectations and needs are met. Our CAO and staff manage the operations of Stettler Ambulance, Stettler Waste and Shirley McClellan Regional Water Services Commission resulting in income to the COS of \$270,000.00/year. Road refurbishing is being implemented versus rebuilding roads, to stabilize road

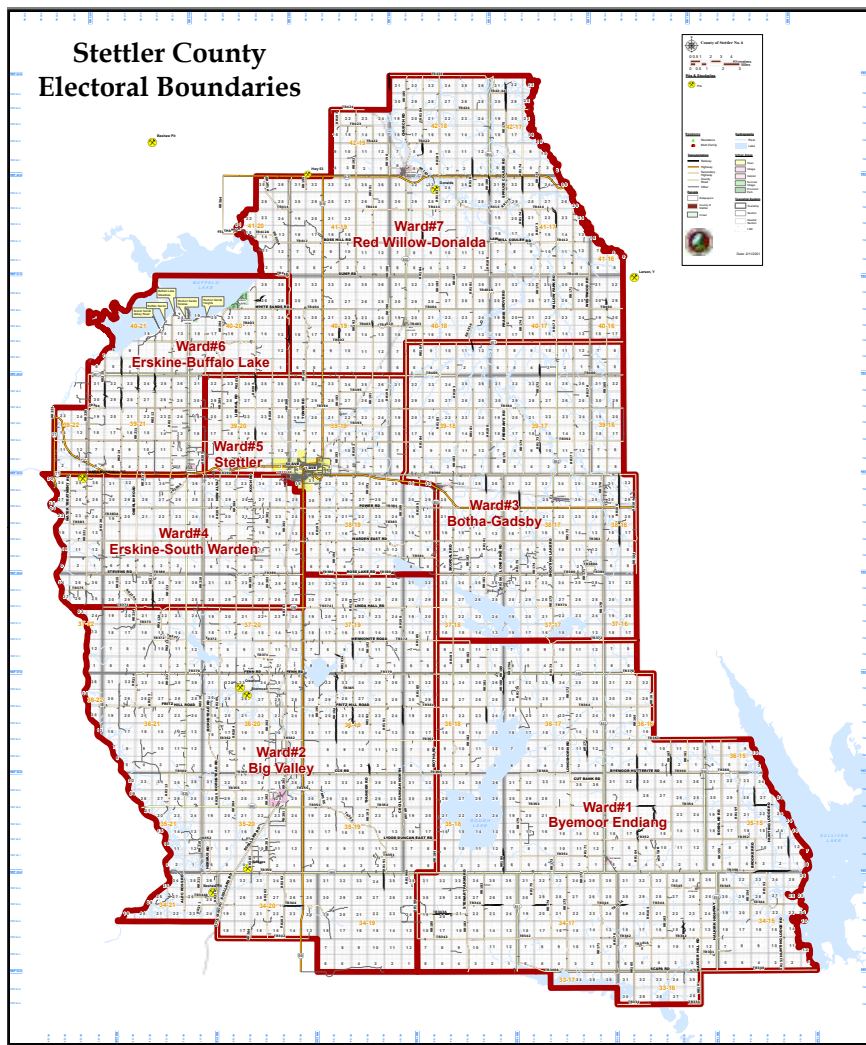
bases at a fraction of the cost of building roads. All services/tasks are being reviewed and challenged to investigate better more cost-effective ways in providing these services. This has all happened with no - to minimal tax increases. Farmland is seeing a 2% increase resulting in a \$34,000.00 combined increase, with all of these funds going back into agricultural programs and services as 2021 budget cuts were threatening some of these programs.

Throughout these and all changes Council has worked collaboratively with the CAO and staff in a transparent manner acceptable under the MGA through COS website posts, livestreams, you tube videos, tweets and facebook posts, monthly council packages including the CAO report and the County Connection magazine. COS offices/operations remained open throughout the entire pandemic with limited public access but kept business as usual with Council meetings being held virtually for one month, and two special meetings held with Council Chambers closed to the public until June 2020 with the re-opening of other government buildings. This was one of the precaution's taken to protect staff and to keep municipal services going - uninterrupted.

In closing this has been a challenging but rewarding experience and one key note is that 5-10% of the residents and business's take up 80-90% of Council and our CAO's staff time, which is why one of our Councillors' frequent quotes is "*Good policy creates good Governance*".

Please be safe in all Fall activities. As stated before please treat County of Stettler staff, all of our wonderful business frontline workers and school staff with respect as you would your neighbours. They are trying their best to deliver on decisions made by Council, boards, owners and government, and they are your neighbours. Get out and practice your democratic right and either run for, or vote in the Federal and Municipal elections. As always please watch the roads as they are busy with construction and agricultural units.

Larry Clarke, REEVE



5

COMMUNITY

OCTOBER 18: PHOTO CONTEST DEADLINE

Submit your photos at www.StettlerCounty.ca for a chance to win!

We are in the home stretch race for the annual County of Stettler photo contest.

2021 is an Election Year in the County of Stettler and we have been enjoying a friendly little photography competition to crown 'the best and beautiful of our 7 Wards'. Above, and also on page 9, you will find our map that divides and delineates the County of Stettler into our 7 Electoral Wards. Share with us, up to 5 of your favorite photos and tell us what 'Ward' your photo was snapped in. This fall, we will crown the 'Most Beautiful Ward' captured by photo, in Stettler County. The Grand Prize Winner won't just win an iPad - but also they will be responsible for crowning one lucky Ward 'the most beautiful Ward of 2021'.

Your pictures can capture anything you deem 'beautiful' from any season, and in ANY ward you choose to snap in. We hope we can fill our calendar with the best of the best as always, and we hope that every ward is represented in our calendar.

Photos should be uploaded to our website at www.StettlerCounty.ca. Please note - landscape photos(wider than tall) lend themselves to calendar usage better than portrait photos (taller than wide).

Our photo contest is open until October 18, 2021 (election day). Maximum of 5 photos per person will be eligible. Photos must be taken in the County of Stettler to be considered for prizes. Questions? Email us at info@stettlercounty.ca. Upload your photos on our website at www.StettlerCounty.ca under Photo Contest (in the blue menu bar) by October 18 at midnight. Good luck!



Have you considered running for County Council? Nominations close at **NOON, September 20, 2021**

Location of Local Jurisdiction Office
County of Stettler No. 6
6602-44 Avenue
Stettler, AB T0C 2L0
Phone: (403) 742-4441

Local Authorities Act
(Section 26)

Local Jurisdiction: **County of Stettler No. 6, Province of Alberta**

Notice is hereby given that the Nomination Period for the 2021 County of Stettler Municipal Election began on January 1, 2021 and ends at NOON on September 20, 2021. Nominations for the election of candidates for the following offices will be received at the location of the local jurisdiction office set out above, **by appointment only**.

Councillor	1	Byemoor Endiang	Ward 1
Councillor	1	Big Valley	Ward 2
Councillor	1	Botha Gadsby	Ward 3
Councillor	1	Erskine South Warden	Ward 4
Councillor	1	Stettler	Ward 5
Councillor	1	Erskine Buffalo Lake	Ward 6
Councillor	1	Donalda Red Willow	Ward 7

Nomination Forms and Councillor Information Packages are available on our website at www.StettlerCounty.ca. Click on Council/Elections/Running for Council.

Appointments are required to submit your nomination papers. Contact Doreen Nixon, Returning Officer, at 587-799-1132 or email ro@stettlercounty.ca. A \$100 fee must be paid when submitting your nomination papers. Nominations will be accepted until Noon, September 20, 2021. No late applications will be accepted.

- A Candidate Information Session will be held at the County of Stettler Administration Building on Monday, September 20, 2021 at 1:00 PM.

DON'T FORGET TO VOTE!

7

Candidates running for County Council, will be listed on our website at www.StettlerCounty.ca as they file their papers. All eligible candidates will be listed on our website by the end of Nomination Day (September 20, 2021).

We are counting on you to come out and cast your ballots in the 2021 Municipal Election being held Monday, October 18, 2021, or in the Advance Vote on October 14 and 15 (details below). Remember voter identification and proof of residency is required to vote. (see page 10 for details).

Advance Vote

Thursday, October 14, 2021

Friday, October 15, 2021

Voting Station open from 10:00 AM- 8:00 PM, each day.

Advance Vote: All Wards vote at the Stettler Agriplex, Pavilion for the Advance Vote.
4516-52 Street, Stettler, AB

Voter Identification and Proof of Residency is required. (page 10)

Election Day

Monday, October 18, 2021

Voting Stations open from 10:00 AM- 8:00 PM

Voting Stations will be located throughout the County on Election Day.

All Wards may vote at the Stettler Agriplex, Pavilion
4516-52 Street, Stettler, AB

Voter Identification and Proof of Residency is required. (page 10)

Where do I vote on Election Day?
Visit Page 8...



WHERE DO I VOTE? OCTOBER 18, 2021

Voting Stations

Every Voting Station will open promptly at 10:00 AM
and will be kept open continuously until 8:00 PM

Only those INSIDE the voting station at 8:00 PM will be permitted to vote.

*Note that **every resident** of the County of Stettler can vote at the Stettler Agriplex, Pavilion at 4516-52 Street, Stettler, AB*

Ward 1:	Byemoor-Endiang	Byemoor Community Hall or Stettler Agriplex, Pavilion
Ward 2:	Big Valley	Big Valley Drop In Centre or Stettler Agriplex, Pavilion
Ward 3:	Botha-Gadsby	Botha Seniors Hall (Activity Club) or Stettler Agriplex, Pavilion
Ward 4:	Erskine South-Warden	Erskine IOOF Community Hall or Stettler Agriplex, Pavilion
Ward 5:	Stettler	Stettler Agriplex, Pavilion
Ward 6:	Erskine-Buffalo Lake	Erskine IOOF Community Hall or Stettler Agriplex, Pavilion
Ward 7:	Donalda-Red Willow	Donalda Drop In Centre (Main Street) or Stettler Agriplex, Pavilion



Voter Identification Requirements

Voter Identification and Eligibility for Municipal Elections



Proof of identity and current residence is required to be able to vote in municipal elections.

Any of the following documents that has the voter's name and address on it will be accepted as valid proof:

- Identification issued by a Canadian government, whether federal, provincial or local, or an agency of that government, that contains a photograph of the elector and their name and current address.
- Bank or credit card statement or personal cheque.
- Government cheque or cheque stub.
- Income or property tax assessment notice.
- Insurance policy or coverage card.
- Letter from a public curator, public guardian or public trustee.
- Pension plan statement of benefits, contributions or participation.
- Residential lease or mortgage statement.
- Statement of government benefits (for example, employment insurance, old-age security, social assistance, disability support or child tax benefit).
- Utility bill (for example, telephone, public utilities commission, television, hydro, gas or water).
- Vehicle ownership, registration or insurance certificate.

A letter or form (attestation) confirming that the person lives at the stated address will also be accepted as valid proof. The letter can be signed prior to the vote by any of the following:

- authorized representative of a commercial property management company;
- authorized representative of a correctional institution;
- authorized representative of a First Nations band or reserve;
- authorized representative of a post-secondary institution;
- authorized representative of a facility that provides services to the homeless; or
- authorized representative of a supportive living facility or treatment centre.

If a voter's identification shows a post office box number as the address instead of a residential or legal address, it can be accepted as verification of current address if it is in reasonable distance to the voting jurisdiction. The address does not have to be in the voting division or ward.

An elected authority could, by bylaw, require additional verification or a combination of verification to establish the person's specific current address.

Contact

Alberta Municipal Affairs
Municipal Services Division
Phone: 780-427-2225 Fax: 780-420-1016
Email: lgsmail@gov.ab.ca

Visit alberta.ca/municipal-elections.aspx for information on municipal elections

©2020 Government of Alberta | Published: July 2020 |

Classification: Public



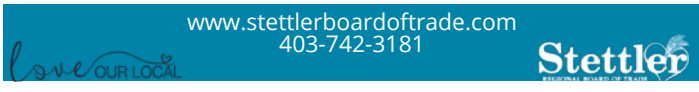


Cultural Food Tour

Order any Cultural Food Tour dish from participating restaurants and enter your name to WIN \$100 Heart of Alberta Dollars sponsored by the Stettler Regional Board of Trade

- Anaiah's - Pansit Bihon (Filipino)**
- Buzzed and Baked - Empanada (South American)**
- Hacker's - Tuscan Chicken Pasta Bowl (Mediterranean)**
- Jacked Up Coffee - Spanish Cuisine (Spanish)**
- Otherside Restaurant - Butter Chicken (Indian)**
- Pita Pit - Spicy Greek Pita (Greek)**
- Tasty Wok - Wonton Soup (Chinese)**
- The Coffee Tree - Bosnian Foods & Desserts (Bosnian)**
- Sweet Home on Main - French Macarons (French)**

Dishes may be subject to specific availability. Visit www.stettlerboardoftrade.com for full details.



Alberta Culture Days
September 2021
Discover • Experience • Celebrate

2 - 21	Rush and Roar Art Exhibit Stettler Public Library
3 - 18	Local Estonian Art Exhibit Stettler Town and Country Museum
18	Cultural Food Tour Participating Local Restaurants
18	Fall Fair Market & Bench Show Stettler Ag Society (10:00am - 2:00pm)
18	TC Energy Kid's Safety Show Stettler Ag Society (10:00am - 2:00pm)
18	E-I-E-I Joe Kid's Farm Show Stettler Ag Society (12:30pm - 1:30pm)

For all of the event details, call or visit
www.stettlerconnects.com
403-742-3181

CULTURE DAYS

We are thrilled that Stettler has once again been named a Host Celebration Site for the 2021 Alberta Culture Days in SEPTEMBER, read the full press release at <http://www.stettlerboardoftrade.com/>.

Join in celebrating the many cultures that make our community so unique throughout September.

Alberta Culture Days
September 2021
Discover • Experience • Celebrate

2 - 21	Rush and Roar Art Exhibit Stettler Public Library
3 - 18	Local Estonian Art Exhibit Stettler Town and Country Museum
11	Cultural Food Tour Participating Local Restaurants
11	Learn to Felt Workshop Stettler Public Library (Registration required)
11	Geneology Workshop Stettler Public Library (Registration required)
11	Historic Ghost Walk Downtown Stettler (Registration required)
12	Old Time Horse Binding and Threshing County of Stettler (Registration required)
14	Weekly Farmers Market Stettler Ag Society (4:00pm - 7:00pm)
15	Explore Clay Workshop Stettler Public Library (Registration required)

For all of the event details, call or visit
www.stettlerconnects.com
403-742-3181



RURAL WATER UPDATES

- This fall, the Shirley McClellan Regional Water Services Commission (SMRWSC) will be extending their waterline, the longest waterline in Alberta, from the White Sands Truck Fill Station to Rochon Sands Provincial Park. The County of Stettler No. 6 manages the operation of the SMRWSC. This project was made possible through application by our Administration, to the Water for Life program, from the Province of Alberta.
- Earlier this spring Phase 2 of the Byemoor water main replacements project took place in Byemoor, AB, a maintenance upgrading program. This fall, Phase 3 of this project will take place, leaving one more phase of water main replacement to occur in Byemoor in 2022. This project ensures the future safety and viability of water to the hamlet of Byemoor and those who are connected to rural waterlines running out of Byemoor.
- Stettler County's lead sampling survey which was delayed in 2020 due to COVID-19, is well underway with our Environmental Services crews sampling water throughout Stettler County in pre-determined locations. This is an Alberta Environment and Parks (AEP) initiative to assess lead hazards and develop lead management plans throughout our province.



8TH
ANNUAL



Stettler
PHEASANT FESTIVAL
• SINCE 2014 •

OCTOBER 15-17 2021

REGISTER FOR OUR 2021 HUNTS ONLINE

Friday Night Smoker &
Saturday Night Banquet Tickets available for purchase

WWW.STETTLERPHEASANTFESTIVAL.COM

 Find us on:
facebook

 Instagram



COUNTY COUNCIL DECLARES AGRICULTURAL DISASTER

Council declares disaster to raise awareness with Provincial and Federal Governments.

Lack of snow pack, run-off and rainfall combined with extended heat waves led County of Stettler Council to declare an Agricultural Disaster on Wednesday, August 11, 2021 at their Regular Council Meeting.

After reviewing the most recent moisture maps, the 2021 growing season appears to be the third worst year in the last 50 years for relative moisture conditions.

“Farmers are currently running combines on very short crops. We’re seeing crops that are too short for equipment to pick up,” said Larry Clarke, Reeve for the County of Stettler. “Farmers are going to be struggling to make something of their crops, and producers are going to be paying to find feed that is not going to be readily available. Surface water in some areas is in severe depletion, or in many cases bone dry,” he added.

Last Friday, August 6, 2021, the Alberta Government announced a relief program for livestock and bee producers. Relief for other commodities has yet to be announced.

Discussions with producers throughout Stettler County have shown similar impacts of the dry weather in all areas, with the situation being most dire in the southeast region of the County and marginal improvement as you move to the northwest. Most producers reported an intent to combine as the price of grains are holding, but those producers are expecting only limited economic benefit due to reduced yields (25-40%).

Producers are reporting 20-40% yield of normal hay crop harvests. Pastures are dry and bare, with producers now having to consider downsizing their herds.

Please visit our website, click on Press Releases, to view the data for our region, provided to the County of Stettler by the Agro-meteorology Applications and Modelling Unit, Alberta Agriculture and Forestry.

County Council made this declaration of Agricultural Disaster with the intent to encourage the Provincial and Federal Government to initiate programming to assist our agricultural producers.

For more information contact Quinton Beaumont, Agricultural Services at 403-742-4441 or email asb@stettlercounty.ca.



Congratulations to Grace Hebbes, recipient of the Agricultural Services Board \$1,000 Bursary for post secondary education. We wish Grace the best of luck in her future educational endeavors. Pictured above with Councillor Ernie Gendre.

Agricultural Supports

Federal Resources:

Agriculture and Agri-Food Canada (AAFC):

- o **The Livestock Tax Deferral Provision** “allows farmers who sell part of their breeding herd due to drought or flooding in prescribed drought or flood regions to defer a portion of sale proceeds to the following year. When prescribed regions are identified, the list is announced publicly and posted to this web page.”
- o Agricultural programs and services “support innovation, sustainable farming, business development, managing risk, trade and market development.”
- o **The AgriInsurance Program** “is a federal-provincial-producer cost-shared program that stabilizes a producer’s income by minimizing the economic effects of primarily production losses caused by severe but uncontrollable natural hazards.” Drought is included as a possible eligible peril.
- o **The Canadian Agricultural Loans Act** program is a federal loan guarantee initiative. The Lenders guidelines include a list of eligible loan purposes where you will find “Clearing, breaking, irrigating and reclaiming of land.”
- o **AgPal** is described as a “one-stop shop for Canadian farmers and agri-businesses looking for information about agricultural resources, programs, services, market intelligence and research.” There is a database to search programs and services, with filters such as region, commodity and topic.
- o **The Canadian Agricultural Partnership (CAP)** includes both federal programs and programs cost-shared by federal, provincial and territorial governments. In the federally-funded activities and programs, Innovative and Sustainable Growth mentions “helping farmers adapt to climate change, conserve water and soil resources, and grow their businesses sustainably to meet increasing global food demand sustainably.” CAP supports projects cost-shared with Alberta.

Farm Credit Canada (FCC) provides financing for agriculture, including “Financing for projects that keep your operation sustainable for the future.” The Contact Us web page will provide a local office.

See also Federal agriculture funding programs and services in Alberta

Provincial Resources:

- o **Agriculture Financial Services Corporation (AFSC)**
- o **Farming in dry conditions - Government of Alberta**

16



Brian Johnston receiving the Linda Hall Community Service Award from Denise Nitschke.

2022 COMMUNITY SERVICE AWARDS

Byemoor to host the 2022 Community Service Awards

The 44th Annual County of Stettler Community Service Awards will be held at the Byemoor Hall in the first quarter of 2022, pending no pandemic restrictions.

This event celebrates the outstanding contributions of our volunteers in agriculture, recreation and culture. The 2021 event was unfortunately cancelled due to the pandemic.

If you have someone you would like to nominate for the 2022 **Stettler Dodge Community Service Award** or the **ATCO Electric Arts, Culture and Heritage Award**, please submit your nomination to Lorraine Hankins, Manager of Recreation and Insurance at the County of Stettler No. 6. More information regarding tickets and location will be available at the end of 2021 on our website at www.StettlerCounty.ca. Check the Events Calendar.



SNOWPLOWING LANEWAYS HOLD HARMLESS

The County of Stettler is pleased to continue to offer the service of snowplowing residential lanes and driveways to qualifying residents within the County. In order to qualify for this service, the following criteria must be met:

- A “Hold Harmless” Agreement must be signed by the land owner. If it is a rental property, both the landowner and the renter must sign the Hold Harmless Agreement. Hold Harmless Agreements for snowplowing must be signed each year.
- Payment of the applicable fee. There is an administrative fee of \$100.00 for each address requesting lane and/or driveway snowplowing. There is no fee for the snowplowing itself.
- Upon receipt of a complete Hold Harmless Agreement, the County will inspect the lane and/or driveway in order to determine if it is suitable for snowplowing. County staff will confirm that the lane and/or driveway is accessible for the County equipment and to identify any safety issues that may arise while they are on site.
- If the inspection determines the lane/driveway is suitable for snowplowing using

County equipment, a “flag” will be issued to the resident. The flag must be displayed in a location visible to the equipment operator.

The application deadline for requesting Lane and Driveway Snowplowing for the 2021/2022 winter season is September 30, 2021.

Late applications will be accepted, however there may be a delay in service due to the inspection requirements or a service refusal if the laneway is snow covered and not able to be properly inspected.

Applications for Lane and Driveway Snowplowing should be directed to the Public Works Facility at 19561 Township Road 38-4. Alternatively, applications may be made at the County of Stettler Administration Building at 6604 – 44 Ave, Stettler.

Unfortunately, the County of Stettler is unable to provide grading or snowplowing services to driveways on private property situated in Hamlets or for multi-lot subdivisions. Likewise, it is not possible for the County to conduct grading or snowplowing to bins, haystacks or corrals.

The Stettler Museum presents:
NIGHT OF TERROR AT THE
BOOSEUM!

HAUNTED HOUSE DATES & TIMES:

THURSDAY OCTOBER 21	7PM - 9PM
FRIDAY OCTOBER 22	8PM - 11PM
SATURDAY OCTOBER 23	8PM - 11PM
THURSDAY OCTOBER 28	7PM - 9PM
FRIDAY OCTOBER 29	8PM - MIDNIGHT
SATURDAY OCTOBER 30	8PM - MIDNIGHT

Once Upon a Time...

\$10.00 PER PERSON
RECOMMENDED FOR 13 YEARS AND UP

FOR MORE INFORMATION PLEASE CONTACT THE STETTLER MUSEUM 403-742-4534

6502 44 AVE STETTLER, AB

DEVELOPMENT SETBACKS

Please remember that you do not need a development permit from the County for any agricultural operation as long as any structures such as hay sheds, granaries, dugouts, livestock shelters and barns meet the 125 feet setback from the center line of the County road.

Shelterbelts must be set back 75 feet from the center line of the road. If you would like to vary from these setbacks for any agricultural operation, you would require a development permit.

You may need a license/permit from the Natural Resources Conservation Board if your agricultural operation includes a confined feeding operation (please call the NRCB at 1-340-5241).

If development is proposed along a provincial highway a Roadside Development Permit issued by Alberta Transportation is required. Please contact Alberta Transportation at 403-854-5550 or visit their website at <http://www.transportation.alberta.ca>.

For more information regarding development please contact the County's Planning & Development Department at 403-742-4441.

19

ZERO TOLERANCE

Please contact our Planning and Development Department when you start planning your development in order to ensure you obtain the required development permit and other approvals in good time. Anyone who intends to undertake a non-agricultural development in the County of Stettler No. 6 is required to first obtain a development permit from the County. This could also help you avoid any unforeseen expenses you may incur if your idea for your development does not comply with the County's policies and bylaws (e.g. yard setbacks, road upgrades, etc.), so you may make the necessary adjustments before you start digging or laying down concrete.

The County does not want to penalize anyone. Rather, we want to work with ratepayers to ensure the proper development approvals are issued in order to comply with municipal, provincial and federal regulations. The County's Fee Bylaw states a penalty of \$1,000 for residential developments and \$2,000 for commercial developments that are started without the benefit of a development permit.

The County of Stettler No. 6 has adopted a zero tolerance approach to persons who start construction without the benefit of a development permit. All relevant penalties required pursuant to the County's Fee Schedule and other actions under the Municipal Government Act (MGA) for such a contravention will be strictly imposed on anyone who fails to obtain a development permit prior to construction start. This information has been made widely available and no exceptions will be made.



WEED OF THE MONTH

FIELD HORSETAIL

Equisetaceae - (Horsetail Family)

A perennial with aerial stems and underground tuber-bearing roots. Field Horsetail has dimorphic stems (both sexes within the same plant). Field Horsetail is native, and common in areas with high water tables.

Beneficial uses

The plant contains several substances that can be used medicinally. It is rich in silicon (10%), potassium, calcium, manganese, magnesium and phosphorus, phytosterols, dietary fiber, vitamins A, E and C, tannins, alkaloids, saponins, flavonoids, glycosides and caffeic acid phenolic ester.

In polluted conditions, it may synthesize nicotine. Externally it was traditionally used for chilblains and wounds. It was also once used to polish pewter and wood (gaining the name pewterwort) and to strengthen fingernails. It is also an abrasive, and makes a great scrub brush when camping and in need a good scouring pad.

Harmful effects

Field Horsetail is toxic to livestock, particularly horses. Generally speaking, livestock do not graze this plant, even if fed by bales.

Is it possible to control field horsetail?

The quick answer is NO.

Unlike other weed problems where we have solutions, field horsetail is a plant where there is no easy answer. That's probably the reason why field horsetail has been around since the Carboniferous age more than 300 million years ago. It is part of the ancient genus Equisetum, a prehistoric survivor and one of the toughest weeds to manage. Chemical control is very limited, and the few that do work, only control top growth, or that years growth.

For more information, or for assistance with weed identification or control methods, email asb@stettlercounty.ca or call 403-742-4441 x128.

STETTLER DISTRICT AG SOCIETY

FALL FAIR

SATURDAY
SEPTEMBER 18

\$10 ADMISSION
FREE FOR CHILDREN 8 & UNDER | FREE ADMISSION TO MARKET

BENCH SHOW	10 A.M. - 2 P.M.
FARMERS MARKET	10 A.M. - 2 P.M.
SUPERDOGS SHOW	11 A.M. AND 1 P.M.
e-i-e-i JOE SHOW	12:30 P.M. - 1:30 P.M.
HEAVY HORSE PULLS	2 P.M.

WWW.STETTLERAGSOCIETY.COM - 403-742-6288



Pictured above is 1.5" gravel, which is being used to restructure our problem areas and weak roadways. Once this gravel works into the surface structure and re-stabilizes our road surfaces, ¾" or 1" gravel will be spread again as our surface gravel.

GRAVEL ROAD REJUVENATIONS

Upgrading our Roads - Cost Efficiently

Over the last several years, many of the service requests that Public Works has received, are related to unstable, soft, muddy, slippery and rutted roads.

This is largely a result of lower quality subgrades that were constructed many years ago for completely different (lower/smaller) traffic loadings. Over the years, trucks and equipment sizes have substantially increased, and with that, the need to strengthen our roads to handle today's traffic and needs. County Council requested solutions to this concern.

Council accepted the approach over the past two years, to place the 1.5" gravel as a surface course to strengthen and structure the road surfaces. As the 1.5" material gets worked into the road, the road will smooth out and be ready to accept the 1" and ¾" surfacing gravels again.

- Adding 1.5" gravel isn't the 'new' way to gravel our County roads. It is a restructuring program.
- ¾" and 1" gravel will be the surface of these roads again, once the 1.5" structure gravel works in.
- Typically, this gravel works into the road surface in a timely manner with average rainfalls. This summer season has presented the challenge that the gravel isn't working

in as quickly as we would hope, with an unexpected lack of moisture in our region.

We've heard your concerns – and we're adjusting the program

While we can't control the moisture, or more accurately the lack of it this year, we have heard and listened to your concerns, and we are adjusting our road rejuvenation program to address your concerns.

- We are closely and diligently double-checking and monitoring large finds (rocks) in the gravel being spread, and removing them.
- We will continue with the road rejuvenation, however we will be cutting the 1.5" gravel deeper into the surface and using wobbly packers on our graders to incorporate it faster into the surface structure
- We are watering areas of high concern and using a packer to work the 1.5" gravel in more quickly
- We are reducing the quantity of the spread, or spreading a thinner layer of 1.5" while moisture levels remain low

Structure Gravel Specifications

1.5" gravel describes the top size of the intended crushed rocks contained in our structuring gravel profile.

- On occasion, crushed or uncrushed



Above, is our pit run material (8" minus material) and it is used to stabilize very weak locations like wetland crossings which are unstable, and then we would cap this with clay mixed with 1.5" gravel to stabilize the surface crust.

rocks that are oversized (larger than 1.5") may inadvertently end up in the piles, as production issues sometimes result from holes in the crusher screens, or material contained in the stockpile base may also contain some oversized rocks.

- The goal of using 1.5" gravel is to incorporate this structural gravel into the grade as a stabilization technique and then to follow up in future gravel program years with 1" or ¾" gravel for surfacing (which is what we are used to driving on).
- During dry times, the 1.5" can take time to work into the surface. When wet, 1.5" gravel works in very quickly and has proved to be an efficient and cost-effective method of stabilizing a road surface.

Pit Run Specifications

Our pit run material is generally a processed 8" minus material, (indicating the intended top size as 8"), that we screen through an 8" grizzly screen to remove larger rock.

- This material is generally used in an excavated subgrade to provide stability in very weak locations such as wetland crossings or small weak spots that are very unstable.
- We generally cap over pit run with clay that we mix with 1.5" gravel to assist in creating a stable surface crust.

Oversized Rocks either uncrushed, or contained in the base (bottom) of the pit

Oversized rocks, pictured on page 24, that were a subject of discussion at our August 11 Council meeting and which caused one of our ratepayers a tire problem on one section of road, came from the stockpiles and were inadvertently introduced in our gravel spread.

- Sometimes, rocks of this nature can also get worked up from the subgrade during maintenance blading.
- While it is the responsibility of our gravel crews and the maintenance grader staff to ensure oversized rocks that may present a danger to traffic are removed, occasionally some large rocks get missed.
- We appreciate our citizens reporting through our Ratepayer Request mechanism by calling 403-742-4441, when they observe large rocks on a roadway.
- This topic is a regular reminder to our gravel forces, and we are constantly working to improve processes and problem recognition to the benefit of the roads. When issues like this arise, we use them as training tools to re-focus our efforts to meet the needs of the traffic and our citizens.



Pictured above, is the large rock that inadvertently made its way onto one of our road surfaces and caused an issue with a ratepayer's tires, which we have compensated for. We regret this error, and have stepped up our gravel spreading checks to reduce the chances of this type of rock being included on a roadway spread.

CONTINUED...

Cost Comparisons

Rebuilding our roads to strengthen them for today's needs would cost a substantial amount of money, making this project unattainable or at the very least far reaching – and require large injections of cash. Road rejuvenation costs are substantially less and have been the direction of Council.

- Rebuilding a section of road to a higher standard would cost the County in the range of \$350,000-\$500,000 per mile using our own forces. This would be a capital cost to the County.
- Full Depth Rejuvenation of a road by digging down, narrowing the roadway, and using pit run and then 1.5" gravel, happens at a cost of \$50,000-\$75,000 per mile. This would be a capital cost to the County.
- Rejuvenation, under our current method of spreading 1.5" gravel and having it work into the surface and then later topping it with ¾"-1" surface gravel, is covered through our annual maintenance budget and costs \$3,500-\$6,000 per mile, depending on where our gravel is sourced.

FAQ

1. Would it be possible to rejuvenate the road using ¾" or 1" in the base?

- The problem areas that exist today and

become rutted and slippery in wet weather, are because the surface structure is made with ¾"-1" base. We are trying to improve the base structure to reduce the unsafe, slippery, rutted conditions that present in times of heavy moisture. We certainly could continue to spread ¾"-1" however it is proven that the road does not hold up well, requiring further attention and maintenance, plus it increases the gravel costs to the County.

2. Did you do any trials to make sure this worked?

- We did lots of trials of road restructuring with 1.5" gravel in problem areas. The 1.5" gravel proved to tighten up the surface and it has held. These pilot projects occurred over the past two years, when moisture levels were closer to average. We do recognize with the lack of moisture this summer, that the 1.5" gravel is not working into the road as quickly as we would have liked. We are adjusting our practices to assist the absorption of the gravel into the surface, in problem areas.

3. Why not use a packer to get the 1.5" gravel into the road?

- We have at a couple of sections. The risk is that the packers crush the gravel down and reduce the size of the gravel and its restructuring effectiveness - however we



Adjusting the program: Above we are applying water and assisting the 1.5" gravel to incorporate into the surface structure more quickly.

will use this method while the dry weather persists, to clean up areas of concern. If the road is softer (like it is when it is damp or wet) this practice has a better chance of working, so we will also be incorporating the water trucks when available and as required.

4. Why not add water and pack the 1.5" gravel in?

- One full water truck can only supply enough water for $\frac{1}{4}$ mile. Man hours and cost to impact five miles is quite great. While we hope for increased moisture soon, we are adjusting, based on your concerns, and will incorporate the use of water trucks in areas of concern for now.

5. 1.5" gravel is wrecking my tires.

- Science says a larger, blunter rock, such as our 1.5" structural gravel, has less chance of damaging or popping a tire (it will be displaced by a tire). We haven't noticed an issues with our fleet vehicles, and they are travelling on the gravel daily.
- The larger heavier gravel is thrown less than the $\frac{3}{4}$ " gravel, which easily sprays especially when a vehicle's speed increases.
- When a section of road is under rejuvenation, you may wish to adjust your speed for the conditions.

6. Why are you putting big gravel on the roads?

- The primary goal was to address soft, rutted, muddy, slippery roads (which occur during wet conditions) and to strengthen roads for today's traffic. We have to balance cost vs. effectiveness. Yes, there may be better ways to strengthen our road, but it would cost much more money.
- Many of the issues we are hearing about are solvable by slowing down and driving for the conditions if your roadway is in rejuvenation.
- A few of the benefits we are hearing about while we are rejuvenating a road include:
 - i. Less dust.
 - ii. Traffic is slowing to a safer traveling speed.
 - iii. We use less gravel over time as speed is reduced.
 - iv. Less impact to vehicles if speed is reduced.
 - v. Roads will stay in better condition, longer.
 - vi. If moisture levels increase, it will assist the farmers/agriculture industry, by stabilizing the road structure to accommodate the large machinery, trucks and equipment.

If you have more questions or concerns, please feel free to contact us at 403-742-4441.

DID YOU KNOW?**Stettler Public Library Cards are FREE!**

Thanks to the support of Stettler County Council and Town of Stettler Council, library cards are free to all residents.

- No membership fees
- No fines for overdue books
- Your card can be set up to work at any public library in Alberta
- Access digital newspapers, magazines, books and more from home for free, with your library card

LIBRARY CARD SIGN UP MONTH IS **SEPTEMBER**

Do you have yours?

Open your wallet and, like others, you will probably find a selection of plastic cards. Some of these cards will allow you to purchase goods and services, others ensure you receive discounted prices and still others will help you collect points to earn rewards.

What if we told you there is a card out there that you can receive for free that will deliver steady value in the form of access to goods and a number of services? That would be a good deal wouldn't it? If you love to read, enjoy following the news, have a subject you would like to learn more about or just want to get out and explore some new hobbies, crafts or interests, the library has something for you.

A Stettler Public Library card provides you with:

- Unlimited access to fiction and non-fiction

books, magazines and comics for all ages, for life-long learning and for entertainment. Pick up print copies at the library or download titles from the eLibrary <https://spl.prl.ab.ca/elibrary> to read offline. Did we mention that the Stettler Public Library is fine free? If you are a few days late to return materials, no worries about overdue fines. The Stettler Library Board is removing as many barriers to library use as possible.

- Access to a collection of DVDs and Blu-ray movies including popular TV series. The library also loans video games. Stay and play, or take a few home to try before you buy.
- All the audio books you want. Listen while you travel or complete tasks that don't require your complete attention, like housework, dog walking or certain hobbies.



- Access a wide collection of manga and graphic novels that you can borrow from the library. Are you interested in drawing manga or graphic novels? We have books about that too.
- Are you interested in getting to know your ancestors a little better? At the Stettler Public Library you can access Ancestry.com, Library Edition for free. We hope to add FamilySearch to our eLibrary this fall. For information about Alberta Culture Days, happening in September, call 403-742-2292.
- School support for students through Solaro, the online learning platform for students in the Alberta grades 3-12 curriculum. We also offer online tutoring assistance by appointment.
- Access to computers, printers, scanners,

faxes and staff support you need to get things done.

- Free Wi-Fi, a computer room you can book for your online course, meeting or exam. If you need invigilation services, library staff can provide this for a small fee.
- Activity kits for children 3+ as well as for seniors in the early to middle stages of dementia.

Libraries have changed a lot over the years. If you have not visited the Stettler Public Library lately, why not stop by and see what the library can provide for you.

Submitted by Stettler Public Library.

Save a Tree

Sign up for e-versions of County Connection magazine by contacting nthorsteinsson@stettlercounty.ca or by calling 403-742-4441.

It's also available on our website at www.stettlercounty.ca.



RETHINKING THE BURNING BARREL

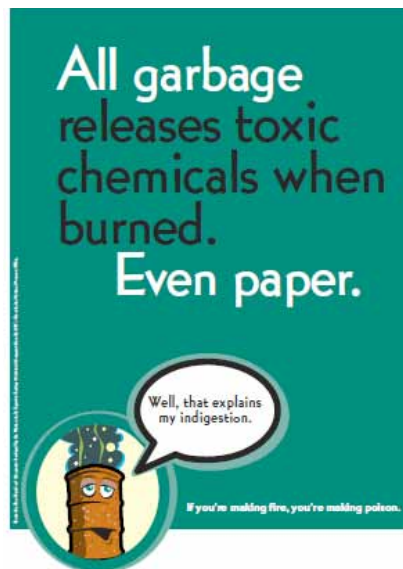
Burning garbage is often the solution of choice in rural areas. But is it really wise?

Burning plastic, rubber or other man-made materials creates dioxin and other dangerous toxins in the air, soil and groundwater. This endangers you, your children, your neighbours, your pets, and all animals. The resulting ash is also toxic and can easily get into the ground and your well water.

Dioxin and other chemicals are totally invisible, and their health effects are not immediate. It is easy to be unaware of the problems. But once you are aware, it doesn't make sense to continue.

It may be hard to accept that the simple act of burning your garbage endangers you and your family. But the longer you continue, the more poisons accumulate in your body. As well, burning garbage, instead of recycling eligible items, removes those items forever and forces the use of valuable non-renewable resources to replace them.

According to Alberta Environment, what is "permitted" burning by law?



Permitted Burning

- *brush and trees*
- *wood not containing wood preservatives*
- *stubble*

Prohibited Burning in Alberta

- *all plastics, including baler twine*
 - *wood containing wood preservatives*
- *all rubber, including tires and rubber-coated wire*
- *pesticide or chemical containers*
- *construction site waste*
- *any other waste that causes dense smoke,*
- *offensive odours or releases toxic substances*

Don't Burn it-Recycle it!

- *plastic*
 - *tires*
 - *paper and cardboard*
 - *paint/paint containers*
 - *beverage containers*
 - *batteries*
 - *metal*
 - *fluorescent bulbs*
 - *used oil*
 - *inkjets/laser toners*
- Compost it!**
- *grass, leaves, straw, weeds, kitchen waste*

Submitted by Heartland Beautification Committee.

COMMUNITY NEWS



Please follow www.StettlerCounty.ca for more community Fall Supper information, as it becomes available!

Light the Night


5:30 to 9pm

**STETTLER MUSEUM'S
6502 - 44 AVENUE**

1/2 KM OF LIGHTED DISPLAY

December Friday's & Saturdays until Christmas
Plus December 20, 21, 22, 23 & 24
5:30 pm - 9pm

**ANNUAL GINGERBREAD HOUSE CONTEST
COME VOTE FOR YOUR FAVORITE**

FOR MORE INFORMATION PLEASE CONTACT KAREN @ 403-742-4534 

Repair Café - Toss It? No Way.

Stettler's popular Repair Café event is happening again. Get free help with repair of items from local volunteers! Don't toss it! Repair it!

Date: Saturday, October 2, 2021 from 1:00 – 5:00 p.m.

Location: Stettler Recreation Centre, upstairs

Repair volunteers will be available in the following categories: small appliances/light fixtures; small engines; clothing; musical instruments; small electronics; cell phones; bicycles; sewing machines (and surgers, spinning wheels, wool carders)

Email: stettlerbeautification@gmail.com or phone the Rec Centre: 403-742-4411. Organized by the Heartland Beautification Committee.

COMMUNITY EVENTS

Donalda Events

- Donalda Fall Supper
Saturday, October 23 - (follow www.StettlerCounty.ca for times)
- Willie Bronze Poker Rally
September 25 and 26: For more info call Becky at 403-740-5997
- A Village Christmas & Country Market
December 5: To book tables contact Beth at 403-741-8196

Please follow www.StettlerCounty.ca for more County of Stettler community Fall Supper/Event information, as it becomes available!

Byemoor Events

- Byemoor Fall Roast Beef Supper
Saturday, October 23 from 4:00 PM - 7:00 PM
- Annual Santa Clause Day and Craft Fair
Saturday, November 27 from 11:00 AM - 3:00 PM

Providing Services to Help you Live in Your Own Home Independently

HOME
SUPPORT
Stettler & District



House Cleaning
Laundry (in home and lodges)
Nail Care (hand and feet)
Caring Companionship
Meals on Wheels

403-742-6568



Public Mail Agreement #41398593
Return Undeliverable Canadian Addresses to:
County of Stettler No. 6
Box 1270
Stettler, AB T0C 2L0